



## Technical Advisory Committee (TAC) Meeting Notice

Monday, April 25, 2022 at 10:00 am

ONLINE LINK: <https://meet.goto.com/614996245>

Please call us at 316.779.1313 at least 48 hours in advance if you require special accommodations to participate in this meeting. We make every effort to meet reasonable requests.

### Meeting Agenda

[Note: Meeting agenda is subject to change during the meeting.]

	Page Numbers (in this packet)
<b>1. Welcome</b>	
<b>2. Regular Business</b>	
A. Approval of April 25, 2022 Agenda	Page 1
B. <a href="#">Approval of March 28, 2022 Minutes</a>	Pages 2 to 5
C. Director's Report	
i. <a href="#">Overview</a>	Page 6
ii. <a href="#">2022 Bicycle/Pedestrian Count</a>	
<b>3. Public Comments</b>	Page 7
<b>4. New Business</b>	
A. <a href="#">Action: Recommend Approval of FFY2023-2026 TIP Selected Projects</a> Ashley Bryers and Nick Flanders, WAMPO	Pages 8 to 31
B. <a href="#">Action: Recommend Approval of Federal Roadway Functional Classification Map</a> Nick Flanders, WAMPO	Pages 32 to 39
C. <a href="#">Update: 2019 &amp; 2020 Crash Maps/5-Year Rolling Average Table</a> Ashley Bryers, Mark Kruep, and Dora Gallo, WAMPO	Pages 40 to 47
D. <a href="#">Update: US-54 East Kellogg Project</a> Raja Govindaswamy, KDOT, and Brian Kidwell, Garver	Page 48
E. <a href="#">Update: FFY2021-FFY2024 TIP Special Amendment</a> Ashley Bryers and Nick Flanders, WAMPO	Page 49
<b>5. Committee Reports/Updates</b>	
A. Safety & Health Committee update, Jack Brown	
B. Active Transportation Committee, Alan Kailer & Jack Brown	
<b>6. Other Business</b>	
<b>7. Adjournment</b>	
<b>WAMPO Region Population Table and Map</b>	Pages 50 to 51
<b>WAMPO Acronym Glossary</b>	Page 52
<b>WAMPO TAC Roster</b>	Page 53
<b>WAMPO 2022 TAC Meetings</b>	Page 54

Chad Parasa, TAC Secretary  
April 20, 2022

WAMPO fully complies with Title VI of the Civil Rights Act of 1964 and related statutes and regulations in all programs and activities. For more information, or to obtain a Title VI Discrimination Complaint Form visit [www.wampo.org](http://www.wampo.org) or call (316) 779-1313. Requests for special accommodation and/or language interpretation should be made to Theresa House at [Theresa.House@wampo.org](mailto:Theresa.House@wampo.org) or call (316) 779-1313.



## Meeting Summary

### Technical Advisory Committee (TAC) Meeting Summary Monday, March 28, 2022 @ 10:00 AM Hybrid Meeting

**Meeting Duration:** 21 minutes

#### Members in Attendance:

Burt Ussery, TAC Chair  
Mike Armour, Wichita  
Stephen Banks, MAPD  
Jolene Graham, Economist  
Representative

Gary Janzen, Wichita  
Dorsha Kirkey, Sedgwick County  
Shawn Mellies, Wichita  
Nina Rasmussen, Air Quality  
Representative

Laura Rainwater, REAP  
Dan Squires, SCAC  
Jim Weber, Sedgwick Co.  
Kristi Wilson, KDOT

#### Other Attendees:

Ashley Bryers, WAMPO  
Steve Degenhardt, City of Wichita  
Nick Flanders, WAMPO  
Mike Hoheisel, Wichita

Alan Kailer, Bike Walk Wichita  
Mark Kruep, WAMPO  
ThaiBinh Ninh, MAPD  
Lynn Packer, Sedgwick County

Chad Parasa, WAMPO  
Tia Raamot, Wichita Transit  
Kristen Zimmerman, PEC

#### 1. Mr. Ussery called the meeting to order at 10:22 AM.<sup>1</sup>

#### 2. Regular Business

##### A. Approval of February 28, 2022 Agenda

Discussion: None

**Action:** Moved to approve agenda as presented. Motion passed (12-0).

**Motion:** Jim Weber

**Second:** Mike Armour

##### B. Approval of January 24, 2022 Minutes

Discussion: None

**Action:** Moved to approve minutes. Motion passed (12-0).

**Motion:** Dan Squires

**Second:** Gary Janzen

##### C. Director's Report

###### i. Overview

Chad Parasa reported WAMPO staff is reviewing and scoring over 30 submitted project requests, regardless of whether or not the project request is in the MTP or its Funding Menu, to be given equal consideration for selection by the TIP Project Selection Committee. This is being done in response to the March 8, 2022 TPB vote which revised exclusively the FFY2023-FFY2026 TIP selection process.

###### ii. FFY2023-FFY2026 TIP Update Development

Nick Flanders informed the Call for Projects for the FFY 2023-FFY2026 TIP was conducted February 9, 2022 to March 9, 2022. The Project Selection Committee will be meeting the afternoon of March 28, 2022, to consider and prioritize the over 30 project requests for WAMPO-sub allocated funding. During the Summer of 2022, WAMPO staff will develop and prepare the actual TIP document for a 30-day public comment period, then present the final TIP document to TAC and TPB for review and vote in the Summer/Fall 2022, with the goal of everything completed and authorized by October 1, 2022, which is the start of FFY 2023.

<sup>1</sup> Due to technical difficulties, the meeting was called to order later than normally scheduled.

iii. **Travel Demand Model RFP Update**

While working with Kansas Department of Transportation (KDOT) and federal partners, WAMPO staff realized the need to revise the timeline for the Travel Demand Model project itself. WAMPO is now coordinating with KDOT and federal partners to revise the timeline, while reassuring the RFP procurement guidelines are met. WAMPO anticipates it will take a couple of months to revise the timeline, and will keep the Committee informed of its progress.

3. **Public Comment Opportunity:** None

4. **New Business**

A. **Action: 2021-2024 TIP (Transportation Improvement Program), Amendment #6**

Mr. Flanders reported the Call for Changes of Amendment #6 took place during January 31, 2022 through February 11, 2022 and the Public Comment Period took place during February 26, 2022 through March 27, 2022 with no comments received. Amendment #6 requests for changes were accepted for eight submitted projects. One project concerns a contact update and does not require formal action. The remaining seven projects require formal action – two projects contain significant modifications, and five projects are new projects. Information regarding these projects can be found on <https://www.wampo.org/transportation-improvement-program>, as well as pages 11-25 of the meeting packet. WAMPO is requesting the Committee to vote on a recommendation to send to TPB for its review and consideration at its April 12, 2022 meeting.

The project submissions which require formal action are:

Project #	Project Name	Change	Type of Formal Action change
1	<b>Bridge #132 on US-54 in Sedgwick County (2022, 2027) (KDOT)</b>	Add new KDOT project to the TIP, \$1,396,464.00	New Project
2	<b>Bridge #305 on I-135 in Sedgwick County (2022, 2027) (KDOT)</b>	Add new KDOT project to the TIP, \$864,996.00	New Project
3	<b>Bridge #094 &amp; #095 on I-235 in Sedgwick County (2022, 2027) (KDOT)</b>	Add new KDOT project to the TIP, \$657,391.00	New Project
4	<b>K-42 in Sedgwick County (2020, 2023, 2025) (KDOT)</b>	Add Construction and Construction Engineering phases; add Conversion Payback year for KDOT-STBG Advance Construction spending already programmed; edit scope; update contact information; large increase (2,146%, \$12,877,200.00) in the cost estimate, from state and KDOT-STBG funds.	Significant Modification
5	<b>I-235, I-135, K-254 &amp; K-96 Interchange-Gold Project-Wichita (2019, 2020, 2021, 2022) (KDOT)</b>	Remove Advance Construction arrangement from NHPP funds used for Preliminary Engineering; change Construction Engineering funding to come entirely from state funds and not NHPP funds; edit scope; increase (17%, \$19,954,000.00) in the cost estimate, from state and NHPP funds.	Significant Modification

Projects #6 and #7 both relate to the same overall new project from KDOT, which has been divided between the two projects:

6	<b>Discovery Phase for US-54 (E. Kellogg Ave) in Sedgwick/Butler Counties (2022) (KDOT)</b>	Add new KDOT project to the TIP, requesting \$1,050,000.00 for discovery phase of project, to change that portion of US-54 to a separated graded freeway from its current surface level arrangement with regular intersections with cross-streets	New project
7	<b>US-54 (E. Kellogg Ave) in Sedgwick/Butler Counties (2022, 2028) (KDOT)</b>	Add new KDOT project to the TIP, requesting \$34,750,000 for preliminary engineering in 2022, with advance construction for payback year in 2028. The construction phase of this project has not yet been added to this project at this time.	New project

The project submitted by the City of Maize – Academy Avenue Improvements from Maize road to Maize City Park - is an administrative adjustment, updating the Administrative Contact’s e-mail address and the Engineering contact. This project does not require formal action.

These eight projects have undergone the Public Comment Review Period and no comments were received to date, which meets with the Metropolitan Transportation Plan requirements. Consistent with federal regulations, the Amendment #6 submitted project are fiscally constrained and the total financial impact of \$71,550,051.00 does not include any new WAMPO-suballocated funds.

Mr. Flanders then noted KDOT recently submitted an additional administrative adjustment on a separate, different project into this Amendment #6 project submissions. WAMPO did not have time to incorporate this recent submission, but will probably incorporated it into the TIP Amendment #7.

**Action:** Motion to approve all of the 2021-2024 TIP Amendment #6 project submissions, as recommended by WAMPO staff, and send to TPB with recommendation for its approval. Motion Passed. (12-0).

**Motion:** Mr. Janzen

**Second:** Mr. Armour

B. **Update: Federal Roadway Functional Classification Maps**

Mr. Flanders reported recommended changes have been received in response to his request for revisions to the Federal Roadway Functional Classification Maps discussed at the February 28, 2022. Also, a notice will soon be sent to jurisdictions, reminding all recommendations and changes need to be delivered to WAMPO prior to the April 12, 2022 TPB meeting so revised maps can be coordinated with KDOT staff to be included in the final map presented for approval at a later meeting.

The WAMPO staff is currently reviewing and incorporating these changes to have the revisions completed in time for review by TPB at its April 12, 2022 meeting, and Mr. Flanders noted the maps contained in today’s meeting packet do not contain revisions.

## 5. Committee & Partnership/Updates

### A. Safety & Health Committee

Mr. Parasa stated Dr. Ablah will be stepping down from her position as Chair for the Safety & Health Committee, and the Committee is looking for a new Chair. The next Safety & Health Committee Meeting is scheduled for May 4, at 9:30 a.m. The agenda and meeting link will be distributed.

### B. Active Transportation Committee

Alan Kailer reported the Active Transportation Committee met on March 3, 2022, with a presentation by Jolene Graham, Deputy City Administrator for the City of Maize, regarding Maize's Pedestrian and Bicycle Master Plan. The next Active Transportation Committee Meeting is scheduled for June 1, 2022, at 9:30 a.m., and will be continuing presentations from the different communities on what they are doing. He requests that any communities would like to be involved and want to share its community plans, to contact Chad Parasa and they will schedule a date for a presentation with the Committee.

## 6. Other Business - None

## 7. Meeting adjourned at 10:43 AM.

**The next regular meeting will be held on Monday, April 25, 2022 at 10:00 AM.**



# 2022 Annual Bicycle & Pedestrian Count Event

## Stay Tuned!

- Wednesday, September 21st from 10:00 am to Noon
- Wednesday, September 21st from 5:00 to 7:00 p.m.
- Thursday, September 22nd from 10:00 am to Noon
- Thursday, September 22nd from 5:00 to 7:00 p.m.
- Saturday, September 24th from Noon to 2:00 p.m



**BIKE RIDERS**

A black wooden-style signpost with two directional signs. The top sign points to the right and contains the text 'BIKE RIDERS' in yellow, bold, sans-serif capital letters.

**PEDESTRIANS**

A black wooden-style signpost with two directional signs. The bottom sign points to the left and contains the text 'PEDESTRIANS' in yellow, bold, sans-serif capital letters.

We will be gathering data to show how valuable our regional bicycle and pedestrian resources are!

For more information  
[Dora.Gallo@wampo.org](mailto:Dora.Gallo@wampo.org)  
or call 316-779-1315





**Agenda Item 3:**  
**Public Comment Opportunity**  
Burt Ussery, Technical Advisory Committee (TAC) Chair

## Background

The Public Comment Opportunity is an open forum for the general public to provide comments about specific items on this month's agenda, as well as any other issues directly pertaining to WAMPO's policies, programs, or documents.

- Comments are limited to two (2) minutes per individual.



**Agenda Item 4A: Action**  
**Recommend Approval of FFY2023-2026 TIP Selected Projects**  
Ashley Bryers, Transportation Planning Manager  
Nick Flanders, Senior Transportation Planner

### Background:

Every two years, the WAMPO Transportation Improvement Program (TIP) is fully updated. As part of this process, WAMPO issues a Call for Projects to award WAMPO-suballocated funding to important transportation projects in the region. During each cycle, typically \$20 million to \$25 million is awarded to new projects and to currently-funded projects requesting additional funding.

WAMPO conducted a Call for Projects for Federal Fiscal Year (FFY) 2025 and 2026 funds (and, if there is a surplus, FFY2023 and FFY2024 funds) February 9 – March 9, 2022.

### Unique Approach for the FFY2023-FFY2026 TIP:

Since MTP projects were last selected in 2018-2019 and approved in 2020, the WAMPO region's transportation system has seen significant disruptions and opportunities resulting from the ongoing pandemic, the recently enacted Bipartisan Infrastructure Law, and new developments specific to the WAMPO area.

In light of requests from member jurisdictions and the above considerations, WAMPO staff proposed, for the FFY2023-FFY2026 TIP, to accept applications for MTP-Funding-Menu projects, projects that are in the MTP but not in the Funding Menu, and projects that are not included in the MTP (but meet MTP goals) as part of this Call for Projects.

The TAC and TPB discussed the process for selecting projects. The TPB, at their March 8, 2022 meeting, voted, for the FFY2023-FFY2026 TIP development process, only, to direct staff to score all projects submitted for the TIP Call for Projects, regardless of whether or not they are in the MTP or its Funding Menu, all of which projects the Project Selection Committee (PSC) would have the option of recommending for funding in the TIP. If a project that is not in the MTP (but meets MTP goals) were selected to be included in the TIP or a project that is not in the MTP Funding Menu were selected to receive WAMPO suballocated funds, or a project that is in the MTP Funding Menu were selected to receive more WAMPO suballocated funds than are listed for it in the Funding Menu, an MTP amendment would be developed concurrently with the FFY2023-FFY2026 TIP.

### Planned Timeline (subject to change):

- *February 9, 2022 - March 9, 2022:* Call for Projects
- *February 18, 2022:* Call for Projects Workshop
- *March 28, April 11, and April 15 2022:* Project Selection Committee meetings
- *April 25, 2022:* TAC recommendation of selected projects
- *May 10, 2022:* TPB approval of selected projects
- *Spring-Summer 2022:* TIP document submitted for state/federal review
- *Summer 2022:* Public Comment period
- *During Public Comment period:* Public Open House
- *Summer-Fall 2022:* TAC recommendation for approval of TIP document and MTP Amendment (if needed)
- *Summer-Fall 2022:* TPB approval of TIP document and MTP Amendment (if needed)





**Agenda Item 4A: Action**  
**Recommend Approval of FFY2023-2026 TIP Selected Projects**

Ashley Bryers, Transportation Planning Manager  
 Nick Flanders, Senior Transportation Planner

**PSC Project Selections:**

1. The following four (4) FFY2024 projects are awarded 80% WAMPO-suballocated funding on qualifying project phases (two are projects that are already programmed to receive WAMPO-suballocated funding in the FFY2021-FFY2024 TIP and are being awarded additional funding):

**Table 1: Submitted Projects to Give 80% Funding**

<b>Sponsor</b>	<b>Project Name</b>	<b>New TIP Project or Additional Funding</b>	<b>Initial-Obligation FFY</b>
Derby	Nelson Drive Realignment	Additional Funding	2024
Kechi	Oliver and Kechi Rd. Intersection	Additional Funding	2024
WAMPO	MTP 2050 Planning Assistance	New Project	2024
WAMPO	Safe Routes to School Planning Assistance	New Project	2024

2. Whatever amount of funding is available after the above four projects have received 80% WAMPO-suballocated funding (whatever combination of Surface Transportation Block Grant (STBG), Congestion Mitigation and Air Quality (CMAQ), and Transportation Alternatives (TA) funds it may consist of) is proportionally distributed among the following seven (7) projects (with STBG, CMAQ, or TA funding assigned to each project according to its scope and component activities), such that each project's WAMPO-suballocated funding is equal to the same percentage of the cost of its qualifying phases (construction and construction engineering):

**Table 2: Submitted Projects to Fund Proportionally from Funds Available After the Awarding to Other Projects of 80% WAMPO-Suballocated Funding**

<b>Sponsor</b>	<b>Project Name</b>	<b>New TIP Project or Additional Funding</b>	<b>Initial-Obligation FFY</b>
Haysville	Seneca & 63rd Street Bike Ped Pathway	New Project	2023
Wichita	Douglas, Seneca to Meridian	New Project	2024
Wichita	17th St N, I-135 to Hillside	New Project	2025
Wichita	Wichita Intelligent Transportation System - E 21st St N	New Project	2025
Butler Co.	SW Butler Rd Improvements from SW 170th St to SW 155th St	New Project	2025
Derby	Rock Road Corridor Improvements	New Project	2026
Sedgwick Co.	Maple Street Pathway	New Project	2026

3. In the event that additional funds become available after the adoption of the FFY2023-FFY2026 TIP, use of such funds will be prioritized as follows:
  - a. First priority is increasing the funding levels on the seven projects in Table 2, up to 80% of the cost of their qualifying project phases (construction and construction engineering), starting with eligible projects in the current FFY.



**Agenda Item 4A: Action**  
**Recommend Approval of FFY2023-2026 TIP Selected Projects**

Ashley Bryers, Transportation Planning Manager  
 Nick Flanders, Senior Transportation Planner

b. Once all projects in Table 2 are funded at the highest level that they can be funded, if there are still funds available, the next funding priority will be this project:

Sponsor	Project Name	New TIP Project or Additional Funding	Initial-Obligation FFY
Bel Aire	45th St N, Oliver to Woodlawn	New Project	2026

c. And the priority after that will be this project:

Sponsor	Project Name	New TIP Project or Additional Funding	Initial-Obligation FFY
Wichita	Redbud Path. Woodlawn to K-96	New Project	2026

*Note 1: All projects selected by the PSC for funding or contingent funding are in the MTP and its Funding Menu. However, some of them are awarded more funding than what is listed for them in the MTP Funding Menu, meaning an MTP amendment will be required.*

*Note 2: For a more detailed explanation of the PSC’s project selections and additional information on the individual projects selected, please see Appendix B. For the set of projects that the PSC made its selections from, see Appendix C.*

**Options:**

- Recommend the TPB approve the PSC’s project selections for WAMPO-suballocated funding in FFY2023-FFY2026, as proposed.
- Recommend the TPB not approve the PSC’s project selections for WAMPO-suballocated funding in FFY2023-FFY2026.
- Recommend the TPB approve the PSC’s project selections for WAMPO-suballocated funding in FFY2023-FFY2026, with specific changes.

**Project Selection Committee Recommendation:**

Recommend the TPB approve the PSC’s project selections for WAMPO-suballocated funding in FFY2023-FFY2026, as proposed.

**Next Steps:**

- The TAC’s recommendation will be presented at the Transportation Policy Body meeting on May 10, 2022 for their final action.
- After projects are selected and prioritized, WAMPO staff will develop the TIP document. The document will be submitted for a thirty-day public comment period and will be presented to TAC and TPB for approval in summer/fall 2022.

**Attachment(s):**

- [Appendix A: Funds Available for Suballocation](#)
- [Appendix B: Detailed Explanation of PSC Project Selections and Tables and Maps of Selected Projects](#)
- [Appendix C: Submitted-Projects Breakdown, Table, and Map](#)



**Agenda Item 4A: Action**  
**Recommend Approval of FFY2023-2026 TIP Selected Projects**  
 Ashley Bryers, Transportation Planning Manager  
 Nick Flanders, Senior Transportation Planner

**Appendix A: Funds Available for Suballocation**

On April 4, 2022, WAMPO received a formal notice from the KDOT Bureau of Local Projects of the amounts of funding available for WAMPO to suballocate to projects in FFY2022, in accordance with the new federal Bipartisan Infrastructure Law. Table A1 compares these with the corresponding amounts for FFY2021 (when the FAST Act applied):

**Table A1: Annual Obligation Limitations from KDOT**

FFY	STBG	CMAQ	TA	Total
2021	\$8,701,161	\$1,898,911	\$689,136	<b>\$11,289,208</b>
2022	\$9,547,349	\$1,945,103	\$1,432,480	<b>\$12,924,932</b>
Diff.	\$846,188	\$46,192	\$743,344	<b>\$1,635,724</b>

The funds-available section the fiscal-constraint analysis for the FFY2023-FFY2026 TIP is planned to use the following assumptions:

- The FFY2022 funding levels (see Table A1) will hold constant for each FFY through FFY2026.
- Projects already programmed to receive WAMPO-suballocated funding in FFY2023 or later in the FFY2021-FFY2024 TIP will not see any reduction in funding in the FFY2023-FFY2026 TIP (with the exception of one project the sponsor agency for which has decided to cancel, and which had been programmed to receive \$2,279,212 in Transportation Alternatives (TA) funds in FFY2024). However, if an existing project is programmed to be funded through an Advance Construction (AC) arrangement, the reimbursement of funds by the federal government to the project sponsor may be either partially or fully moved to an earlier FFY.
- Although additional funds may become available after the adoption of the FFY2023-FFY2026 TIP, it is not assumed that they will.

As a rule of thumb, KDOT allows up to approximately \$1,000,000 to be carried over from one FFY to the next, though they reserve the right to make exceptions to this. As a result of additional funding available through the recently-enacted Bipartisan Infrastructure Law, the Coronavirus Response and Relief Supplemental Appropriations Act, and a large deobligation of funds from a past-year project, it is projected that FFY2022 will end with a surplus of significantly more than \$1,000,000, without sufficient opportunities available to use those extra funds by the end of FFY2022. Before the FFY2023-FFY2026 TIP is adopted, WAMPO staff anticipate receiving guidance on how much in suballocated funds may be carried over from FFY2022 to FFY2023, and hence made available for projects in the FFY2023-FFY2026 TIP. Two likely scenarios for this carry-over (which are not the only possible scenarios) are shown in Table A2:



**Agenda Item 4A: Action**  
**Recommend Approval of FFY2023-2026 TIP Selected Projects**  
 Ashley Bryers, Transportation Planning Manager  
 Nick Flanders, Senior Transportation Planner

**Table A2: FFY2022-to-FFY2023 Carryover Scenarios**

Scenario	STBG	CMAQ	TA	Total
Rule-of-Thumb Carry-Over Limit	\$2,035,193	(\$1,917,997)	\$882,804	\$1,000,000
Projected Full FFY2022 Year-End Balance (May Change)	\$4,643,210	(\$1,917,997)	\$882,804	\$3,608,017

If the above funding assumptions are applied to these scenarios, the funds available for distribution in FFY2023-FFY2026 are as shown in Tables A3 and A4 (as mentioned above, AC funds may be shifted between FFYs to adjust how much funding is available in each year):

**Table A3: Funds Available in FFY2023-FFY2026 if \$1,000,000 Carried Over from FFY2022**

FFY	STBG	CMAQ	TA	Total
2022	\$2,035,193	(\$1,917,997)	\$882,804	\$1,000,000
2023	\$463,082	\$862,968	\$1,432,480	\$2,758,529
2024	\$227,651	\$1,945,103	\$1,432,480	\$3,605,233
2025	\$1,921,513	\$1,945,103	\$1,432,480	\$5,299,095
2026	\$9,547,349	\$1,945,103	\$1,432,480	\$12,924,931
<b>Total</b>	<b>\$14,194,787</b>	<b>\$4,780,278</b>	<b>\$6,612,724</b>	<b>\$25,587,789</b>

**Table A4: Funds Available in FFY2023-FFY2026 if \$3,608,017 Carried Over from FFY2022**

FFY	STBG	CMAQ	TA	Total
2022	\$4,643,210	(\$1,917,997)	\$882,804	\$3,608,017
2023	\$463,082	\$862,968	\$1,432,480	\$2,758,529
2024	\$227,651	\$1,945,103	\$1,432,480	\$3,605,233
2025	\$1,921,513	\$1,945,103	\$1,432,480	\$5,299,095
2026	\$9,547,349	\$1,945,103	\$1,432,480	\$12,924,931
<b>Total</b>	<b>\$16,802,804</b>	<b>\$4,780,278</b>	<b>\$6,612,724</b>	<b>\$28,195,806</b>



**Agenda Item 4A: Action**  
**Recommend Approval of FFY2023-2026 TIP Selected Projects**  
 Ashley Bryers, Transportation Planning Manager  
 Nick Flanders, Senior Transportation Planner

**Appendix B: PSC Project Selections**

- The following four (4) FFY2024 projects are awarded 80% WAMPO-suballocated funding on qualifying project phases (two are projects that are already programmed to receive WAMPO-suballocated funding in the FFY2021-FFY2024 TIP and are being awarded additional funding):

**Table B1: Submitted Projects to Give 80% Funding**

Sponsor	Project Name	New TIP Project or Additional Funding	Initial-Obligation FFY
Derby	Nelson Drive Realignment	Additional Funding	2024
Kechi	Oliver and Kechi Rd. Intersection	Additional Funding	2024
WAMPO	MTP 2050 Planning Assistance	New Project	2024
WAMPO	Safe Routes to School Planning Assistance	New Project	2024

Which leaves the following amounts available for funding other projects:

**Table B2: Funds Available in FFY2023-FFY2026 if \$1,000,000 Carried Over from FFY2022, After Funding for Projects Selected for 80% WAMPO-Suballocated Funding Is Subtracted**

FFY	STBG	CMAQ	TA	Total
2022	\$2,035,193	(\$1,917,997)	\$882,804	\$1,000,000
2023	\$463,082	\$862,968	\$1,432,480	\$2,758,529
2024	(\$2,761,833)	\$1,945,103	\$1,232,480	\$415,749
2025	\$1,921,513	\$1,945,103	\$1,432,480	\$5,299,095
2026	\$9,547,349	\$1,945,103	\$1,432,480	\$12,924,931
<b>Total</b>	<b>\$11,205,303</b>	<b>\$4,780,278</b>	<b>\$6,412,724</b>	<b>\$22,398,305</b>

**Table B3: Funds Available in FFY2023-FFY2026 if \$3,608,017 Carried Over from FFY2022, After Funding for Projects Selected for 80% WAMPO-Suballocated Funding Is Subtracted**

FFY	STBG	CMAQ	TA	Total
2022	\$4,643,210	(\$1,917,997)	\$882,804	\$3,608,017
2023	\$463,082	\$862,968	\$1,432,480	\$2,758,529
2024	(\$2,761,833)	\$1,945,103	\$1,232,480	\$415,749
2025	\$1,921,513	\$1,945,103	\$1,432,480	\$5,299,095
2026	\$9,547,349	\$1,945,103	\$1,432,480	\$12,924,931
<b>Total</b>	<b>\$13,813,320</b>	<b>\$4,780,278</b>	<b>\$6,412,724</b>	<b>\$25,006,322</b>



**Agenda Item 4A: Action**  
**Recommend Approval of FFY2023-2026 TIP Selected Projects**

Ashley Bryers, Transportation Planning Manager  
 Nick Flanders, Senior Transportation Planner

2. Whatever amount of funding is available after the above four projects have received 80% WAMPO-suballocated funding (whatever combination of Surface Transportation Block Grant (STBG), Congestion Mitigation and Air Quality (CMAQ), and Transportation Alternatives (TA) funds it may consist of) is proportionally distributed among the following seven (7) projects (with STBG, CMAQ, or TA funding assigned to each project according to its scope and component activities), such that each project’s WAMPO-suballocated funding is equal to the same percentage of the cost of its qualifying phases (construction and construction engineering):

**Table B4: Submitted Projects to Fund Proportionally from Funds Available After the Awarding to Other Projects of 80% WAMPO-Suballocated Funding**

Sponsor	Project Name	New TIP Project or Additional Funding	Initial-Obligation FFY
Haysville	Seneca & 63rd Street Bike Ped Pathway	New Project	2023
Wichita	Douglas, Seneca to Meridian	New Project	2024
Wichita	17th St N, I-135 to Hillside	New Project	2025
Wichita	Wichita Intelligent Transportation System - E 21st St N	New Project	2025
Butler Co.	SW Butler Rd Improvements from SW 170th St to SW 155th St	New Project	2025
Derby	Rock Road Corridor Improvements	New Project	2026
Sedgwick Co.	Maple Street Pathway	New Project	2026

The costs of these seven projects relative to the available-funding scenarios presented in Tables B2 and B3 are such that, if either of those funding scenarios were to transpire, the percent WAMPO-suballocated funding on the qualifying phases of these seven projects would be as follows:

**Table B5: Initial Percent WAMPO-Suballocated Funding on Projects Funded at Less than 80%**

Scenario	% Funding Level
\$1,000,000 Carried Over from FFY2022 to FFY2023	69.3%
\$3,608,017 Carried Over from FFY2022 to FFY2023	77.4%

As noted in *Appendix A: Funds Available for Suballocation*, the final carryover amount from FFY2022 to FFY2023 may be a different amount than either of these, meaning the percent funding level for these seven projects would also be different.



**Agenda Item 4A: Action**  
**Recommend Approval of FFY2023-2026 TIP Selected Projects**

Ashley Bryers, Transportation Planning Manager  
 Nick Flanders, Senior Transportation Planner

3. In the event that, after the approval of project-specific WAMPO-suballocated funding levels for the FFY2023-FFY2026 TIP, additional funding becomes available (e.g., from deobligations of funds on past-year projects or additional (or larger) funding pools being made available by the federal government), use of such funds will be prioritized as follows:
  - a. First priority is increasing the funding levels on the seven projects in Table B4, up to 80% of the cost of their qualifying project phases (construction and construction engineering).
    - i. If one or more of these seven projects is programmed to have its initial obligation in the same FFY as when the additional funds become available (but has not yet had its initial obligation), that/those project(s) are given priority over the rest of the seven. If more than one project fits this description, funding will be distributed to them proportionally, such that they will continue to have the same percentage WAMPO-suballocated funding as each other.
    - ii. If there are still funds available after all current-FFY projects (among the seven in Table B4) have been funded to the maximum level that they can be funded (i.e., either they have 80% WAMPO-suballocated funding or they have had their initial obligation), the remaining funds will be similarly made available to projects from Table B4 that are programmed to have their initial obligation in the following FFY. If all following-FFY projects from Table B4 reach their maximum funding levels, the process will be repeated for the next FFY, and so on.
  - b. Once all projects in Table B4 are funded at the highest level that they can be funded, if there are still funds available, the sponsor agency for the following project will be offered an opportunity to use the funds on the project in FFY2026 (up to 80% of the cost of the project’s qualifying phases (construction and construction engineering, but not the Concept Plan phase that they also requested funding for)), provided that they judge that the funds would constitute a sufficient level of federal funding for the project to be able to proceed:

Sponsor	Project Name	New TIP Project or Additional Funding	Initial-Obligation FFY
Bel Aire	45th St N, Oliver to Woodlawn	New Project	2026

- c. If the sponsor agency of the above project declines the funds that are offered to them or if they accept the funds but more funding is available than what would cover 80% of the cost of construction and construction engineering on the project, leaving a remainder that has not been awarded, a similar offer will be extended for this project:

Sponsor	Project Name	New TIP Project or Additional Funding	Initial-Obligation FFY
Wichita	Redbud Path. Woodlawn to K-96	New Project	2026

*Note: All projects selected by the PSC for funding or contingent funding are in the MTP and its Funding Menu. However, some of them are awarded more funding than what is listed for them in the MTP Funding Menu, meaning an MTP amendment will be required.*

**Projects Selected for 80% Funding**

WAMPO I.D.	Lead Agency	Project Title	Would Require MTP Amendment	In Current MTP	New TIP Project or Additional Funding	Cost of Qualifying Project Phase(s)	Requested Revised Fed. \$ minus \$ Already Programmed	Scorecard	Staff-Generated Score
INT-19-01	Kechi	Oliver and Kechi Rd. Intersection	Yes	Yes	Additional Funding	\$3,042,317	\$909,629	Road Reconstruction/Modernization	51.75
40-541	Derby	Nelson Drive Realignment	Yes	Yes	Additional Funding	\$8,498,914	\$1,759,855	Road Reconstruction/Modernization	38.25
P-23-01	WAMPO	MTP 2050 Planning Assistance	No	Yes	New TIP Project	\$400,000	\$320,000	N/A	N/A
P-23-03	WAMPO	Safe Routes to School Planning Assistance	No	Yes	New TIP Project	\$250,000	\$200,000	N/A	N/A

**New Projects Initially Selected for Up to 80% Funding**

WAMPO I.D.	Lead Agency	Project Title	Would Require MTP Amendment	In Current MTP	New TIP Project or Additional Funding	Cost of Qualifying Project Phase(s)	Requested Revised Fed. \$ minus \$ Already Programmed (NOT EQUAL TO INITIAL AWARDED AMOUNT)	Scorecard	Staff-Generated Score
40-511	Sedgwick Co.	Maple Street Pathway	Yes	Yes	New TIP Project	\$1,650,000	\$1,320,000	Multiuse Trails/Bicycle Facilities	56.50
40-538	Haysville	Seneca & 63rd Street Bike Ped Pathway	No	Yes	New TIP Project	\$1,373,819	\$1,099,055	Multiuse Trails/Bicycle Facilities	56.25
40-537	Butler County	SW Butler Rd Improvements from SW 170th St to SW 155th St	No	Yes	New TIP Project	\$11,683,800	\$9,347,040	Road Expansion	79.75
40-510	Wichita	17th St N, I-135 to Hillside	Yes	Yes	New TIP Project	\$3,000,000	\$2,400,000	Road Reconstruction/Modernization	73.50
40-517	Wichita	Douglas, Seneca to Meridian	No	Yes	New TIP Project	\$4,890,000	\$3,900,000	Road Reconstruction/Modernization	72.75
40-540	Derby	Rock Road Corridor Improvements	No	Yes	New TIP Project	\$4,890,000	\$3,912,000	Road Reconstruction/Modernization	64.50
40-056	Wichita	Wichita Intelligent Transportation System - E 21st St N	Yes	Yes	New TIP Project	\$5,250,000	\$4,200,000	Traffic Management	69.00

**New Projects Prioritized for Funding if Extra Becomes Available**

WAMPO I.D.	Lead Agency	Project Title	Would Require MTP Amendment	In Current MTP	New TIP Project or Additional Funding	Cost of Qualifying Project Phase(s)	Requested Revised Fed. \$ minus \$ Already Programmed	Scorecard	Staff-Generated Score
40-522	Wichita	Redbud Path. Woodlawn to K-96	Yes	Yes	New TIP Project	\$5,000,000	\$4,000,000	Multiuse Trails/Bicycle Facilities	65.50
40-015	Bel Aire	45th St N, Oliver to Woodlawn (Construction/Construction Engineering Phases)	Yes	Yes	New TIP Project	\$13,640,000	\$10,912,000	Road Reconstruction/Modernization	63.50

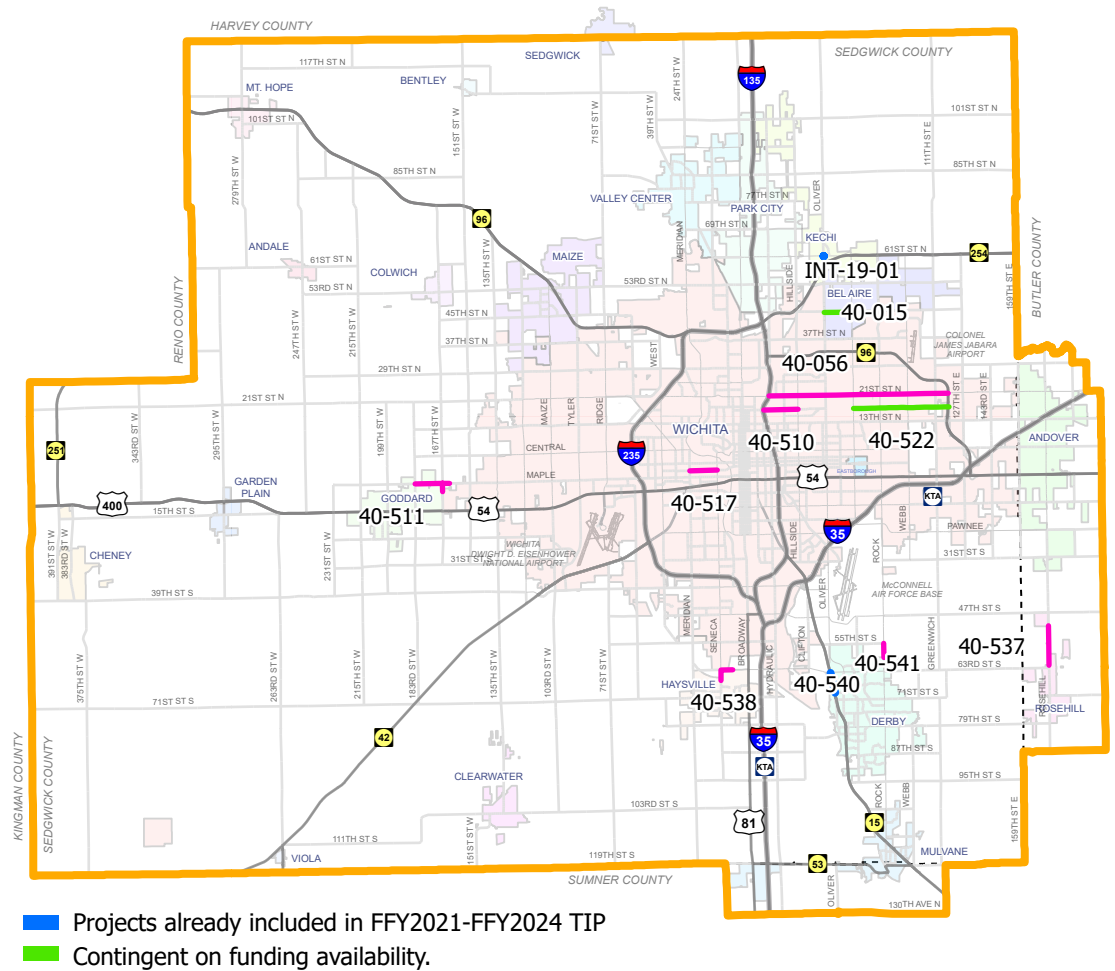




# Project Selection Committee Recommendations 2022

WAMPO ID	Lead Agency	Project Title
40-537	Butler County	SW Butler Rd Improvements from SW 170th St to SW 155th St
40-015	City of Bel Aire	45th St N, Oliver to Woodlawn
40-541	City of Derby	Nelson Drive Realignment
40-540	City of Derby	Rock Road Corridor Improvements
40-538	City of Haysville	Seneca & 63rd Street Bike Ped Pathway
INT-19-01	City of Kechi	Oliver and Kechi Rd. Intersection
40-517	City of Wichita	Douglas, Seneca to Meridian
40-522	City of Wichita	Redbud Path. Woodlawn to K-96
40-056	City of Wichita	Wichita Intelligent Transportation System - E 21st St N
40-510	City of Wichita	17th St N, I-135 to Hillside
40-511	County of Sedgwick	Maple Street Pathway
P-23-01 *	WAMPO	MTP 2050 Planning Assistance
P-23-03 *	WAMPO	Safe Routes to School Planning Assistance

\* Not Mappable

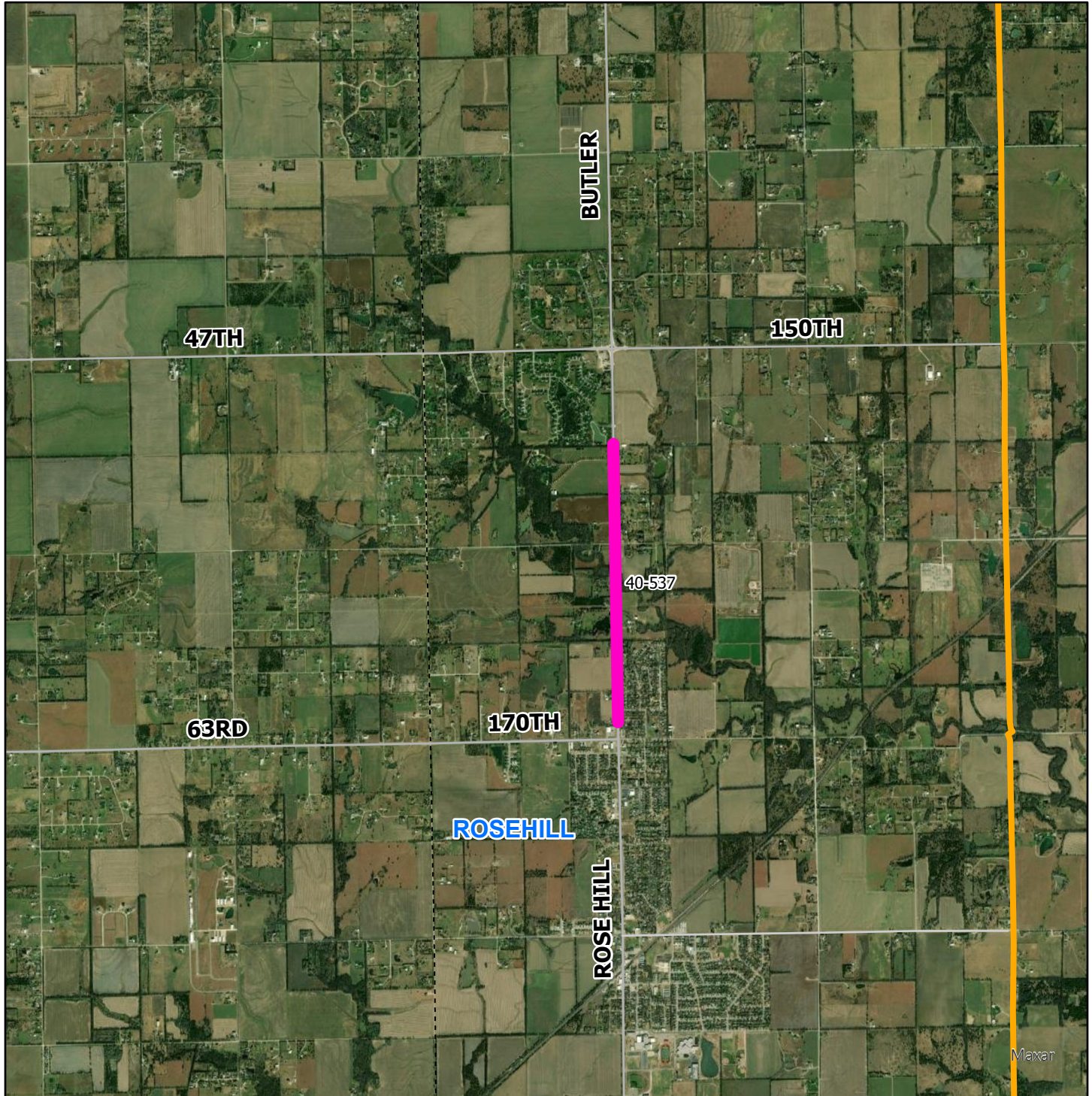


Source: FFY23 - FFY26 TIP Call for Projects  
 Produced by: WAMPO  
 Date Exported: 4/20/2022  
 Folder: \\EXTFS\wampo\$\Plans & Projects\TIP\2023-2026 TIP\Mapping\  
 The information shown on this map is compiled from various sources made available to us which we believe to be reliable.

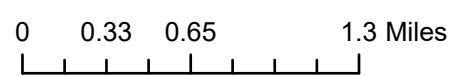


# SW Butler Rd Improvements from SW 170th St to SW 155th St

Lead Agency: Butler County  
WAMPO ID: 40-537

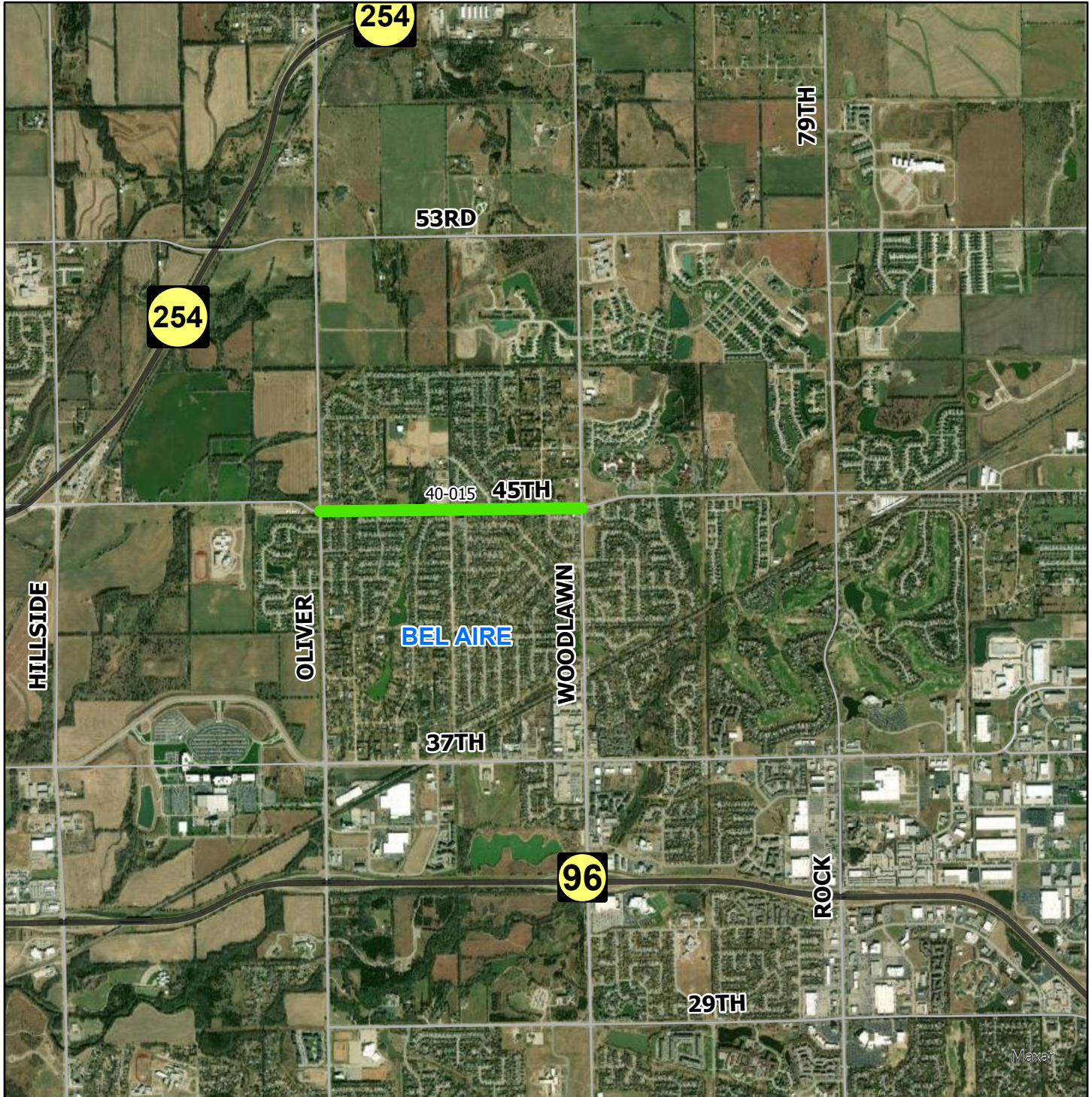


Source: FFY23 - FFY26 TIP Call for Projects  
Produced by: WAMPO  
Date Exported: 4/20/2022  
Folder: \\EXTFS\wampo\$\Plans & Projects\TIP\2023-2026 TIP\Mapping\  
The information shown on this map is compiled from various sources made available to us which we believe to be reliable.

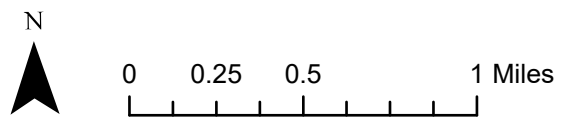


# 45th St N, Oliver to Woodlawn

Lead Agency: City of Bel Aire  
WAMPO ID: 40-015

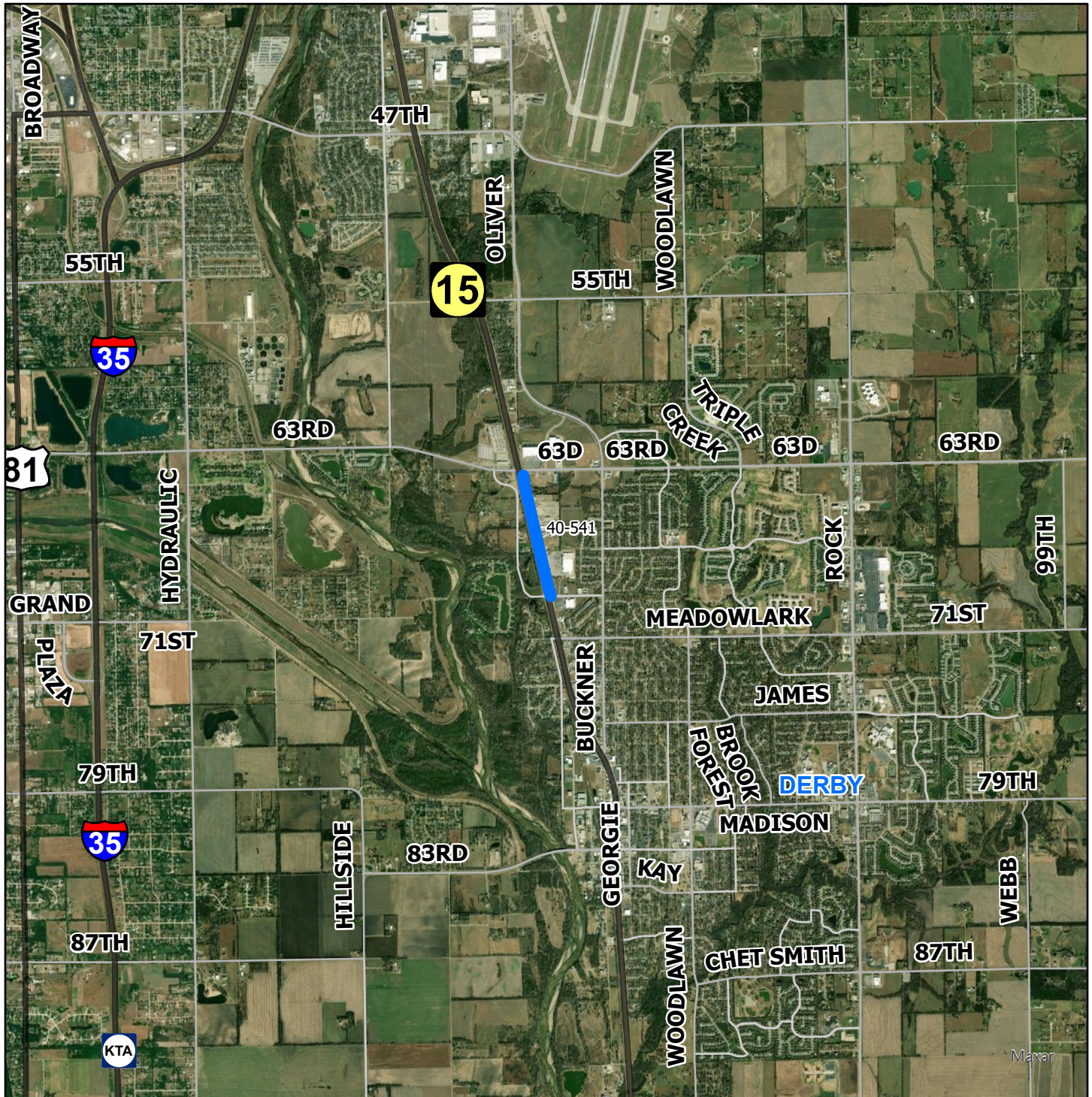


Source: FFY23 - FFY26 TIP Call for Projects  
Produced by: WAMPO  
Date Exported: 4/20/2022  
Folder: \\EXTFS\wampo\$\Plans & Projects\TIP\2023-2026 TIP\Mapping\  
The information shown on this map is compiled from various sources made available to us which we believe to be reliable.



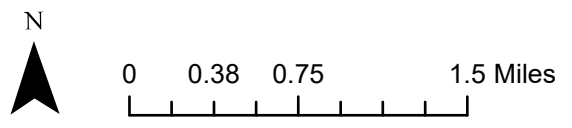
# Nelson Drive Realignment

Lead Agency: City of Derby  
WAMPO ID: 40-541



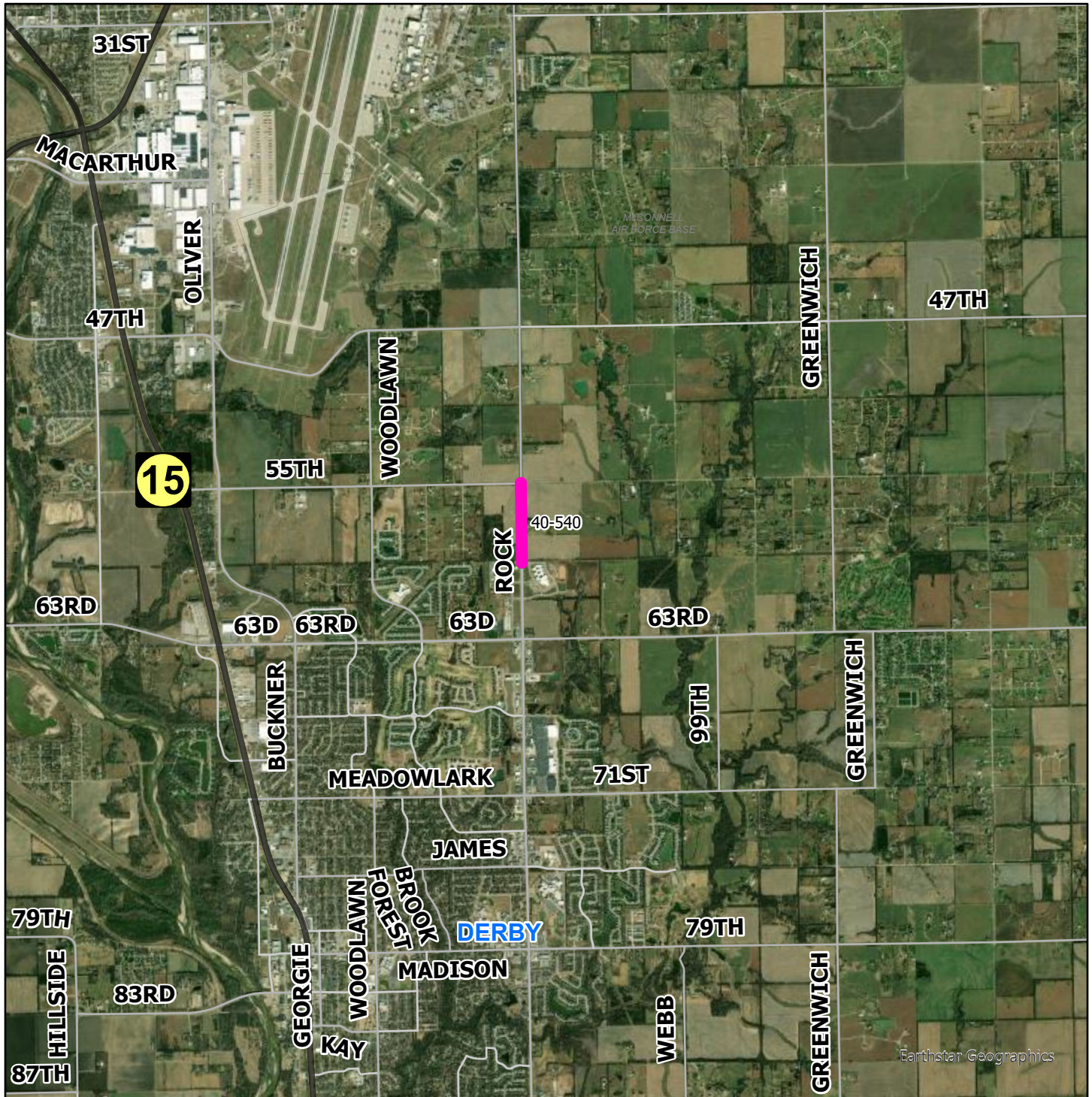
Source: FFY23 - FFY26 TIP Call for Projects  
Produced by: WAMPO  
Date Exported: 4/20/2022  
Folder: \\EXTFS\wampo\$\Plans & Projects\TIP\2023-2026 TIP\Mapping\

The information shown on this map is compiled from various sources made available to us which we believe to be reliable.

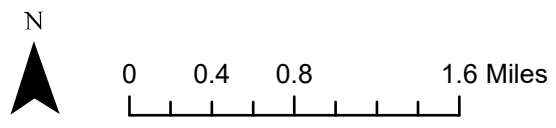


# Rock Road Corridor Improvements

Lead Agency: City of Derby  
WAMPO ID: 40-540

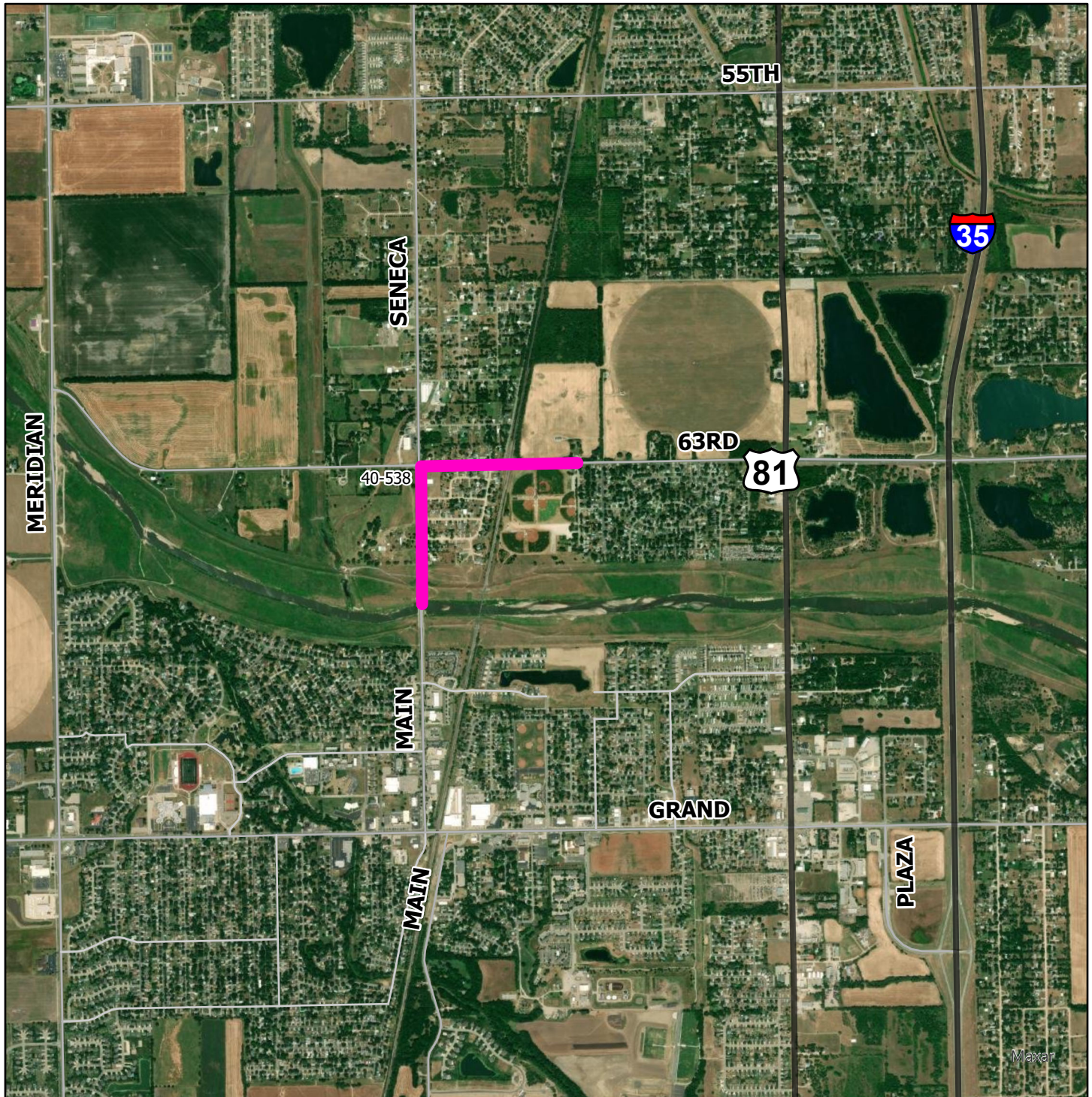


Source: FFY23 - FFY26 TIP Call for Projects  
Produced by: WAMPO  
Date Exported: 4/20/2022  
Folder: \\EXTFS\wampo\$\Plans & Projects\TIP\2023-2026 TIP\Mapping\1  
The information shown on this map is compiled from various sources made available to us which we believe to be reliable.

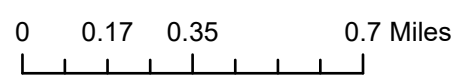


# Seneca & 63rd Street Bike Ped Pathway

Lead Agency: City of Haysville  
WAMPO ID: 40-538

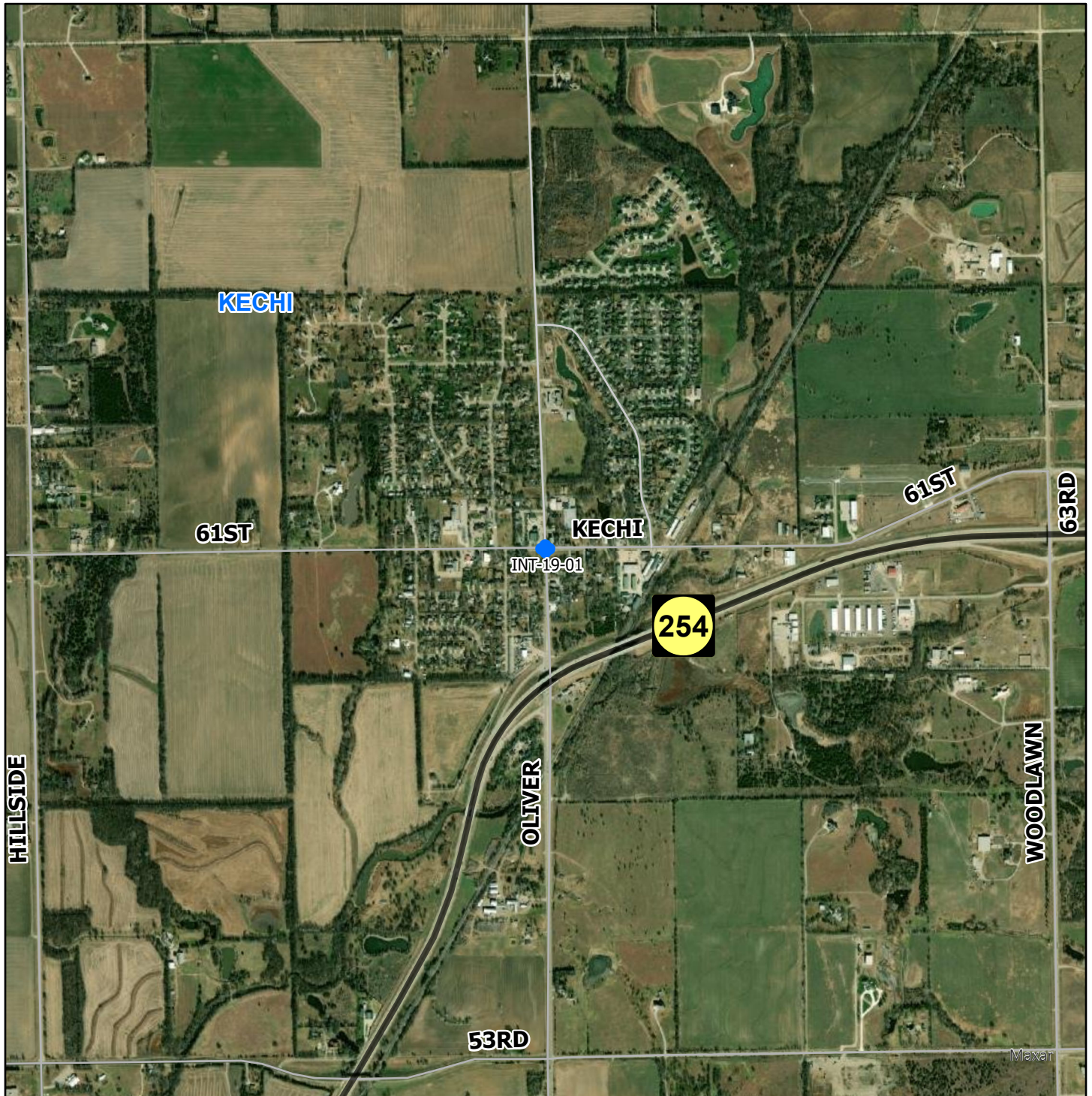


Source: FFY23 - FFY26 TIP Call for Projects  
Produced by: WAMPO  
Date Exported: 4/20/2022  
Folder: \\EXTFS\wampo\$\Plans & Projects\TIP\2023-2026 TIP\Mapping\  
The information shown on this map is compiled from various sources made available to us which we believe to be reliable.

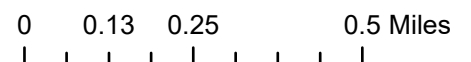


# Oliver and Kechi Rd. Intersection

Lead Agency: City of Kechi  
WAMPO ID: INT-19-01

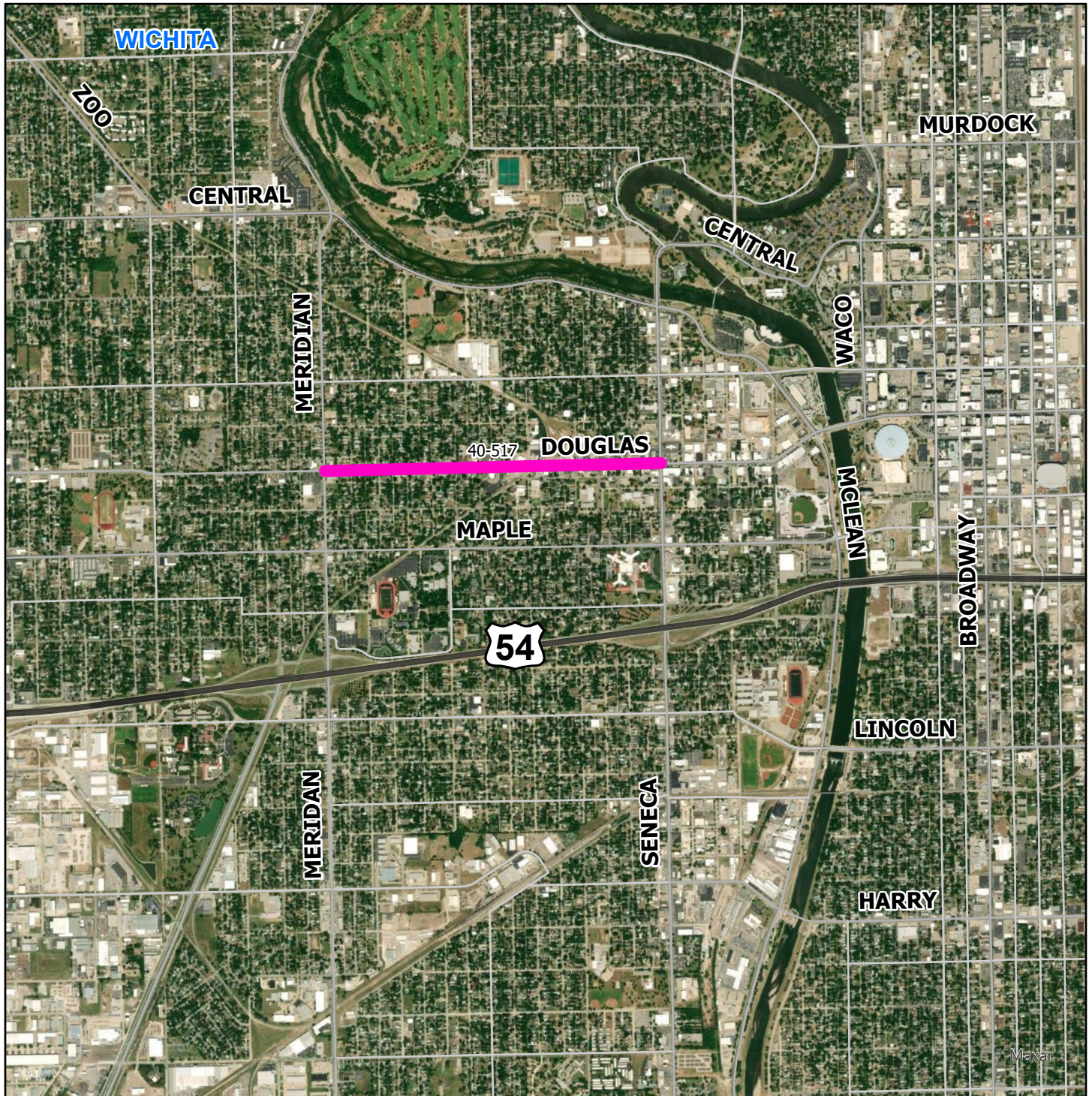


Source: FFY23 - FFY26 TIP Call for Projects  
Produced by: WAMPO  
Date Exported: 4/20/2022  
Folder: \\EXTFS\wampo\$\Plans & Projects\TIP\2023-2026 TIP\Mapping\  
The information shown on this map is compiled from various sources made available to us which we believe to be reliable.

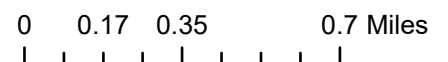


# Douglas, Seneca to Meridian

Lead Agency: City of Wichita  
WAMPO ID: 40-517



Source: FFY23 - FFY26 TIP Call for Projects  
Produced by: WAMPO  
Date Exported: 4/20/2022  
Folder: \\EXTFS\wampo\$\Plans & Projects\TIP\2023-2026 TIP\Mapping\  
The information shown on this map is compiled from various sources made available to us which we believe to be reliable.

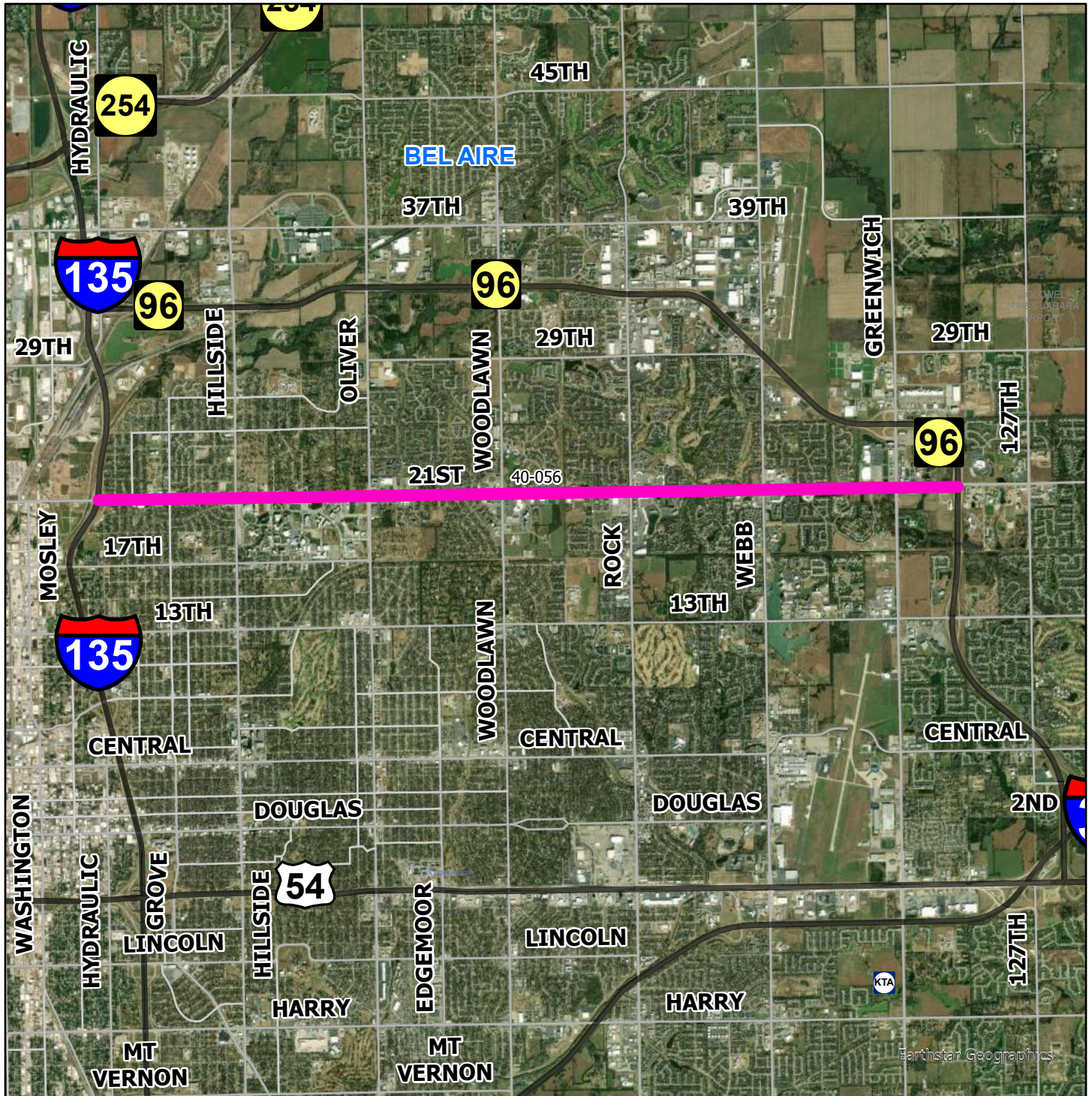






# Wichita Intelligent Transportation System - E 21st St N

Lead Agency: City of Wichita  
WAMPO ID: 40-056

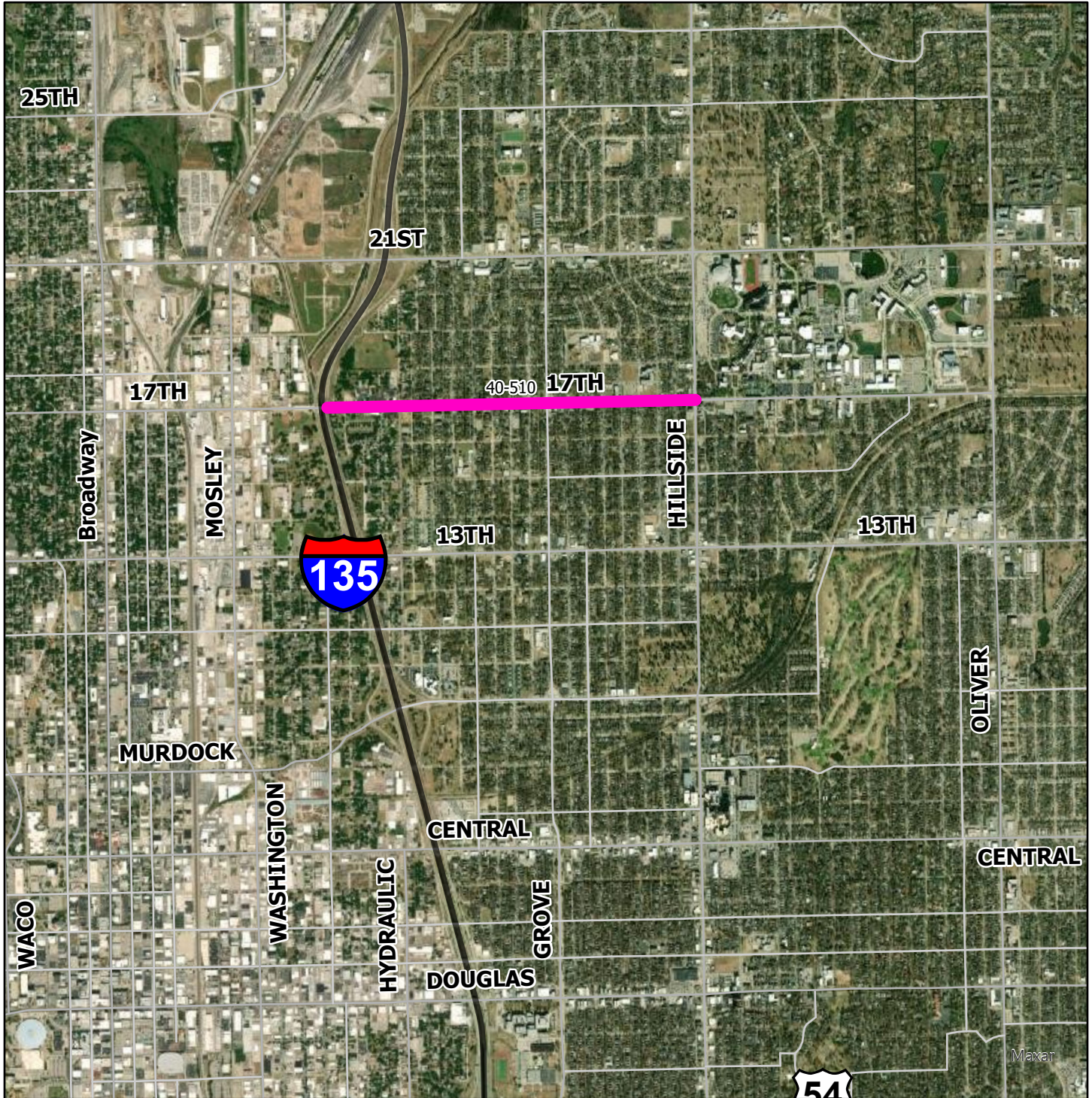


Source: FFY23 - FFY26 TIP Call for Projects  
Produced by: WAMPO  
Date Exported: 4/20/2022  
Folder: \\EXTFS\wampo\$\Plans & Projects\TIP\2023-2026 TIP\Mapping\  
The information shown on this map is compiled from various sources made available to us which we believe to be reliable.

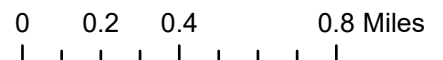


# 17th St N, I-135 to Hillside

Lead Agency: City of Wichita  
WAMPO ID: 40-510

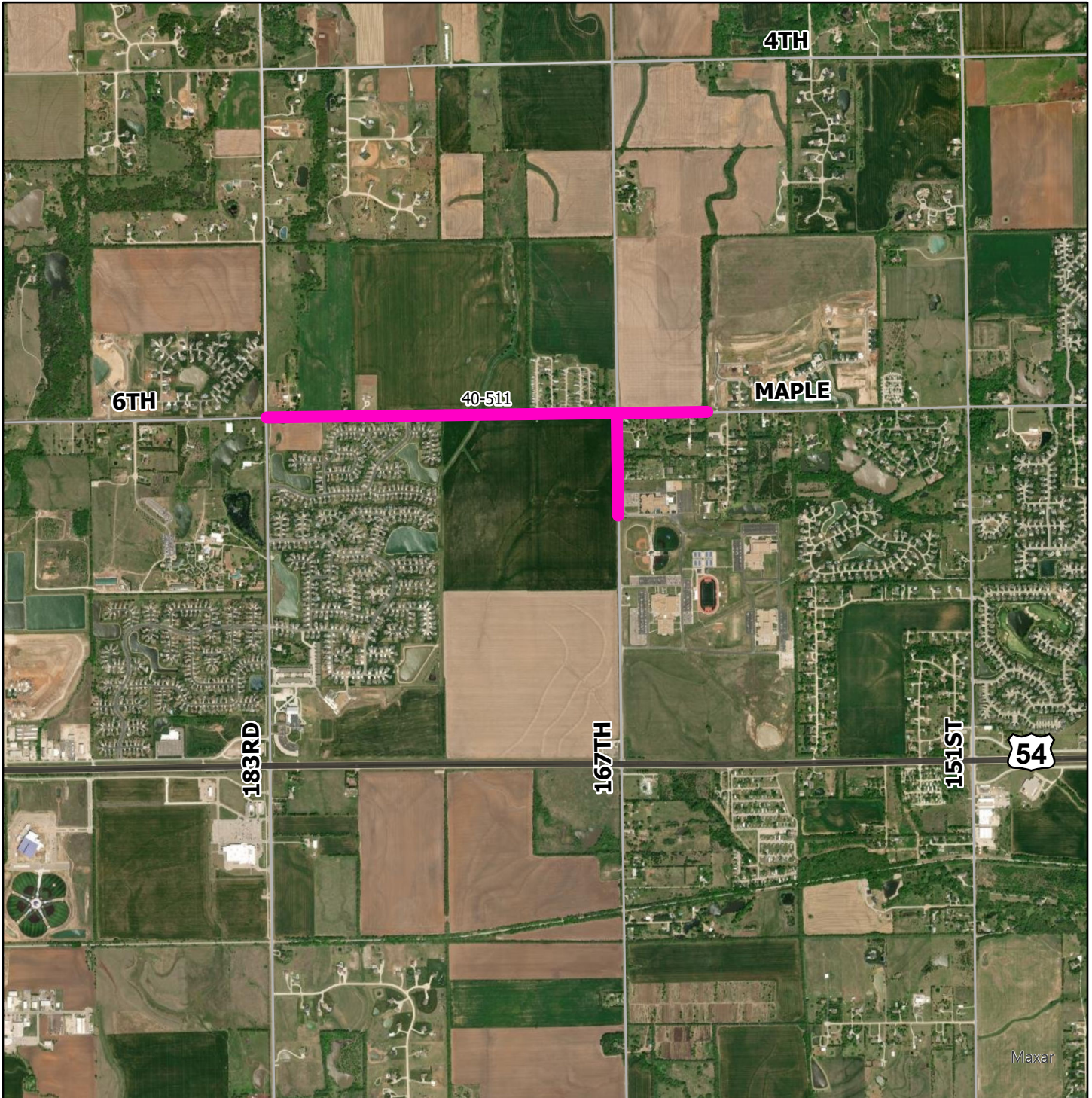


Source: FFY23 - FFY26 TIP Call for Projects  
Produced by: WAMPO  
Date Exported: 4/20/2022  
Folder: \\EXTFS\wampo\$\Plans & Projects\TIP\2023-2026 TIP\Mapping\The information shown on this map is compiled from various sources made available to us which we believe to be reliable.

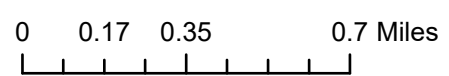


# Maple Street Pathway

Lead Agency: County of Sedgwick  
WAMPO ID: 40-511



Source: FFY23 - FFY26 TIP Call for Projects  
Produced by: WAMPO  
Date Exported: 4/20/2022  
Folder: \\EXTFS\wampo\$\Plans & Projects\TIP\2023-2026 TIP\Mapping\  
The information shown on this map is compiled from various sources  
made available to us which we believe to be reliable.





## **Agenda Item 4A: Action** **Recommend Approval of FFY2023-2026 TIP Selected Projects**

Ashley Bryers, Transportation Planning Manager  
Nick Flanders, Senior Transportation Planner

### **Appendix C: Submitted Projects**

WAMPO received 33 project submissions requesting new or increased WAMPO-suballocated funding. Of the 33:

- 2 already have suballocated funding awarded to them in the FFY2021-FFY2024 TIP (and are requesting an increase) and 31 do not.
- 21 are already in the MTP and 12 would need to be added to the MTP to be funded.
- 22 would require an MTP amendment to receive the full amount of funding requested (this includes the 12 that would need to be added to the MTP and 10 that are in the MTP but would need to either be added to the Funding Menu or have their Funding Menu amount increased) and 11 would not.
- 10 proposed to have construction/implementation in FFY2023-FFY2024 and 23 proposed to have it in FFY2025-FFY2026.
- The breakdown by submitting agency is:
  - 2 from Andover
  - 1 from Bel Aire
  - 1 from Butler County
  - 3 from Derby
  - 1 from Haysville
  - 1 from Kechi
  - 5 from Maize
  - 3 from Park City
  - 1 from Sedgwick County
  - 2 from Valley Center
  - 9 from Wichita Public Works
  - 1 from Wichita Transit
  - 3 from WAMPO

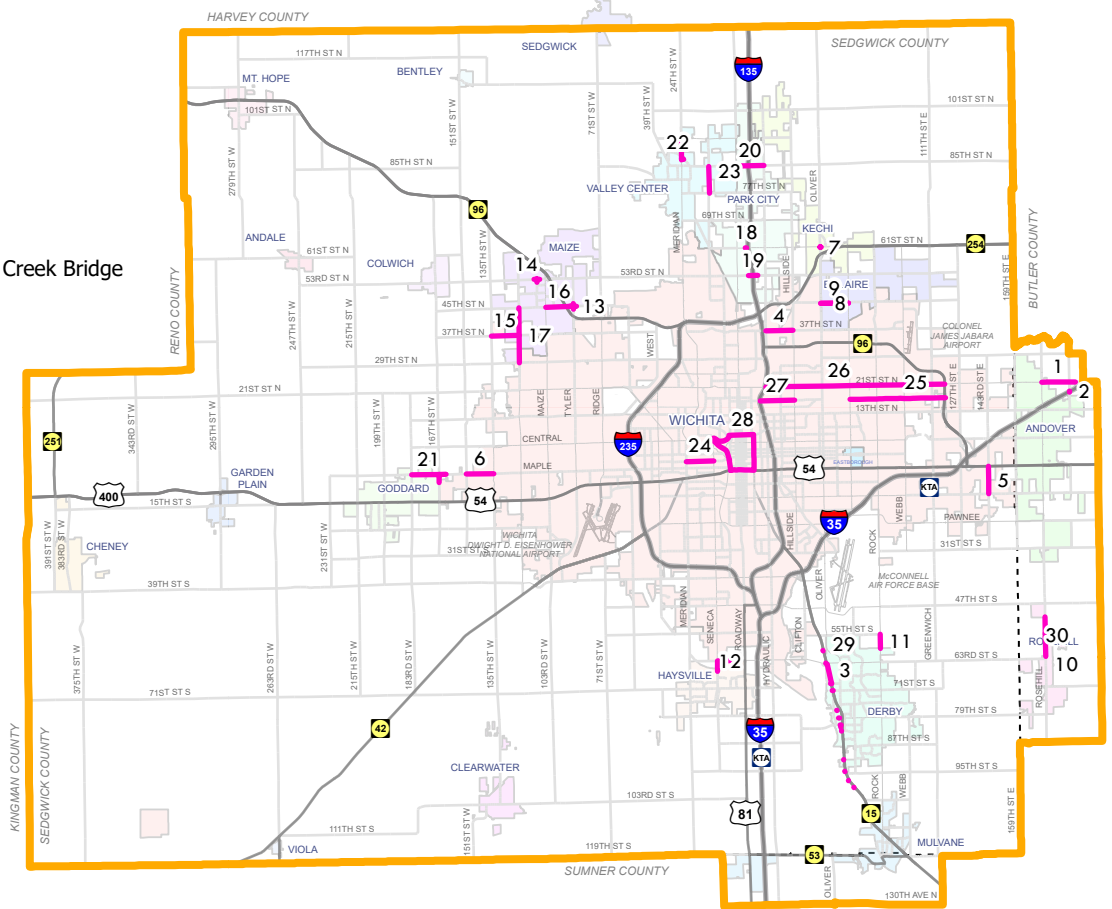
Projects Submitted for Funding Consideration

Map Number	WAMPO I.D.	Lead Agency	Project Title	Would Require MTP Amendment	In Current MTP	New TIP Project or Additional Funding	Cost of Qualifying Project Phase(s)	Requested Revised Fed. \$ minus \$ Already Programmed	Scorecard	Staff-Generated Score
2	40-012	Andover	Prairie Creek Rd bridge over KTA	No	Yes	New TIP Project	\$5,257,920	\$4,206,336	Bridge	66.00
25	40-522	Wichita	Redbud Path, Woodlawn to K-96	Yes	Yes	New TIP Project	\$5,000,000	\$4,000,000	Multiuse Trails/Bicycle Facilities	65.50
21	40-511	Sedgwick Co.	Maple Street Pathway	Yes	Yes	New TIP Project	\$1,650,000	\$1,320,000	Multiuse Trails/Bicycle Facilities	56.50
12	40-538	Haysville	Seneca & 63rd Street Bike Ped Pathway	No	Yes	New TIP Project	\$1,373,819	\$1,099,055	Multiuse Trails/Bicycle Facilities	56.25
10 & 30	40-537	Butler County	SW Butler Rd Improvements from SW 170th St to SW 155th St	No	Yes	New TIP Project	\$11,683,800	\$9,347,040	Road Expansion	79.75
1	40-008	Andover	21st Street Improvements, from KTA Toll Booth to Andover Road	Yes	Yes	New TIP Project	\$9,273,011	\$7,418,408	Road Expansion	77.00
22	RX-23-01	Valley Center	Meridian Avenue Improvement Project from 7th Street to W 93rd Street N.	Yes	No	New TIP Project	\$9,000,000	\$7,200,000	Road Expansion	63.50
5	R-19-14	Wichita	143rd St. E., Kellogg-Harry	No	Yes	New TIP Project	\$4,950,000	\$3,960,000	Road Reconstruction/Modernization if 3-lane (likliest), Road Expansion if 5-lane	73.5 if 3-lane, 76 if 5-lane
27	40-510	Wichita	17th St N, I-135 to Hillside	Yes	Yes	New TIP Project	\$3,000,000	\$2,400,000	Road Reconstruction/Modernization	73.50
24	40-517	Wichita	Douglas, Seneca to Meridian	No	Yes	New TIP Project	\$4,890,000	\$3,900,000	Road Reconstruction/Modernization	72.75
6	R-19-15	Wichita	Maple, 135th Street W to 151st Street W	Yes	Yes	New TIP Project	\$4,125,000	\$3,300,000	Road Reconstruction/Modernization	71.25
13	RRM-23-02	Maize	45th Street and Tyler Road Intersection	Yes	No	New TIP Project	\$4,830,000	\$3,864,000	Road Reconstruction/Modernization	71.00
15	RRM-23-04	Maize	37th Street from 119th Street to 135th Street	Yes	No	New TIP Project	\$3,175,000	\$2,540,000	Road Reconstruction/Modernization	67.25
18	RRM-23-07	Park City	61st and I-135 Southbound Ramps Roundabout	Yes	No	New TIP Project	\$2,845,838	\$2,276,670	Road Reconstruction/Modernization	66.75
4	R-19-12	Wichita	37th St N., Hydraulic to Hillside	No	Yes	New TIP Project	\$5,000,000	\$4,000,000	Road Reconstruction/Modernization	66.25
17	RRM-23-06	Maize	119th Street from 29th Street to 45th Street	Yes	No	New TIP Project	\$11,520,000	\$9,216,000	Road Reconstruction/Modernization	65.50
11	40-540	Derby	Rock Road Corridor Improvements	No	Yes	New TIP Project	\$4,890,000	\$3,912,000	Road Reconstruction/Modernization	64.50
8	40-015	Bel Aire	45th St N, Oliver to Woodlawn (Concept Plan Phase)	No	Yes	New TIP Project	\$60,000	\$48,000	Road Reconstruction/Modernization	63.50
9	40-015	Bel Aire	45th St N, Oliver to Woodlawn (Construction/Construction Engineering Phases)	Yes	Yes	New TIP Project	\$13,640,000	\$10,912,000	Road Reconstruction/Modernization	63.50
20	RRM-23-09	Park City	85th Street and Broadway Roundabout	Yes	No	New TIP Project	\$808,946	\$359,532	Road Reconstruction/Modernization	63.00
16	RRM-23-05	Maize	45th Street from Maize Road to Tyler Road	Yes	No	New TIP Project	\$11,000,000	\$8,800,000	Road Reconstruction/Modernization	62.75
29	RRM-23-01	Derby	Derby Quiet Zone Improvements	Yes	No	New TIP Project	\$2,000,000	\$1,600,000	Road Reconstruction/Modernization	62.25
19	RRM-23-08	Park City	53rd Street & I-135 Divergent Diamond Intersection (DDI)	Yes	No	New TIP Project	\$5,348,662	\$4,278,929	Road Reconstruction/Modernization	61.75
14	RRM-23-03	Maize	53rd Street and Park Avenue Intersection and Rail Crossing Closure	Yes	No	New TIP Project	\$333,000	\$266,400	Road Reconstruction/Modernization	59.50
23	RRM-23-10	Valley Center	Seneca Street: 77th Street North (Ford Street) to 85th Street North	Yes	No	New TIP Project	\$5,625,000	\$4,500,000	Road Reconstruction/Modernization	53.00
7	INT-19-01	Kechi	Oliver and Kechi Rd. Intersection	Yes	Yes	Additional Funding	\$3,042,317	\$909,629	Road Reconstruction/Modernization	51.75
3	40-541	Derby	Nelson Drive Realignment	Yes	Yes	Additional Funding	\$8,498,914	\$1,759,855	Road Reconstruction/Modernization	38.25
28	40-526	Wichita	Wichita Intelligent Transportation System - Central Business District	No	Yes	New TIP Project	\$3,150,000	\$2,520,000	Traffic Management	89.50
26	40-056	Wichita	Wichita Intelligent Transportation System - E 21st St N	Yes	Yes	New TIP Project	\$5,250,000	\$4,200,000	Traffic Management	69.00
N/A	40-099	Wichita	Comprehensive Way Finding	Yes	Yes	New TIP Project	\$1,700,000	\$1,360,000	Traffic Management and/or Pedestrian Facilities (not great fit for any scorecard)	65.00
N/A	T-23-01	Wichita Transit	Paratransit Vehicle Replacement	Yes	Yes	New TIP Project	\$1,200,000	\$960,000	Transit	67.50
N/A	P-23-02	WAMPO	WAMPO Planning Walkable Places Program Round 2	No	Yes	New TIP Project	\$800,000	\$640,000	Either N/A or Pedestrian Facilities	N/A
N/A	P-23-01	WAMPO	MTP 2050 Planning Assistance	No	Yes	New TIP Project	\$400,000	\$320,000	N/A	N/A
N/A	P-23-03	WAMPO	Safe Routes to School Planning Assistance	No	Yes	New TIP Project	\$250,000	\$200,000	N/A	N/A

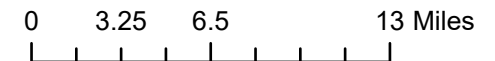


# Submitted to Project Selection Committee 2022

#	Project Title
1	21st Street Improvements, from KTA Toll Booth to Andover Road
2	Prairie Creek Rd bridge over KTA
3	Nelson Drive Realignment
4	37th St N., Hydraulic to Hillside
5	143rd St. E., Kellogg-Harry
6	Maple, 135th Street W to 151st Street W
7	Oliver and Kechi Rd. Intersection
8	45th St N, Oliver to Woodlawn (Concept Plan Phase)
9	45th St N, Oliver to Woodlawn (Construction/Construction Engineering Phases)
10	SW Butler Rd Improvements from SW 170th St to SW 155th St except Eightmile Creek Bridge
11	Rock Road Corridor Improvements
12	Seneca & 63rd Street Bike Ped Pathway
13	45th Street and Tyler Road Intersection
14	53rd Street and Park Avenue Intersection and Rail Crossing Closure
15	37th Street from 119th Street to 135th Street
16	45th Street from Maize Road to Tyler Road
17	119th Street from 29th Street to 45th Street
18	61st and I-135 Southbound Ramps Roundabout
19	53rd Street & I-135 Divergent Diamond Intersection (DDI)
20	85th Street and Broadway Roundabout
21	Maple Street Pathway
22	Meridian Avenue Improvement Project from 7th Street to W 93rd Street N.
23	Seneca Street: 77th Stret North (Ford Street) to 85th Street North
24	Douglas, Seneca to Meridian
25	Redbud Path. Woodlawn to K-96
26	Wichita Intelligent Transporation System - E 21st St N
27	17th St N, I-135 to Hillside
28	Wichita Intelligent Transporation System - Central Business District
29	Derby Quiet Zone Improvements
30	SW Butler Rd Improvement-Eightmile Creek Bridge and Rdwy Improvements



Source: FFY23 - FFY26 TIP Call for Projects  
 Produced by: WAMPO  
 Date Exported: 4/7/2022  
 Folder: T:\Plans & Projects\TIP\2023-2026 TIP\Mapping\  
 The information shown on this map is compiled from various sources  
 made available to us which we believe to be reliable.





**Agenda Item 4B: Action**  
**Recommend Approval of Federal Roadway Functional Classification Map**  
Nick Flanders, Senior Transportation Planner

### Background:

WAMPO uses the Federal Highway Administration (FHWA) Functional Classification (FC) system to sort public highways, roads, and streets into the following categories: Interstates, Other Highways and Freeways, Other Principal Arterials, Minor Arterials, Major Collectors, Minor Collectors, and Local Roads. These categories are based on characteristics such as traffic volumes, lane and shoulder widths, surrounding land uses, and degrees of access to surrounding homes and businesses. The FHWA provides guidance on classification definitions and characteristics and on mileage distribution among categories. In general, roads with higher volumes, such as interstates, highways, and freeways, carry higher traffic volumes and are intended for longer-distance travel, whereas roads with lower traffic volumes, such as collectors and local roads, are intended to provide direct access to homes and businesses.

The classifications in the WAMPO region were most recently updated in 2019, after changes were primarily proposed in Butler County and in the City of Derby, to better align the classifications to the actual functions of these roads. Since then, new residential and commercial development and changes to the road network in the WAMPO region have necessitated a few minor changes in the functional classification system, as well as the inclusion of the 95<sup>th</sup> Street South corridor where it is planned to cross the Arkansas River and the inclusion of the anticipated future alignment of the Northwest Bypass/Northwest Expressway, from northwest Wichita to Goddard. Over the last several months, WAMPO staff have solicited suggestions for changes in the classification system from member jurisdictions and reviewed the proposed changes with Kansas Department of Transportation (KDOT) staff. The jurisdictions suggesting the changes and KDOT are in agreement on each change shown in the attached maps and table.

### Options:

- Recommend the TPB approve the changes, as proposed.
- Recommend the TPB not approve the proposed changes.
- Recommend the TPB approve the proposed changes with specific modifications.

### Recommendation:

Recommend the TPB approve the proposed changes to the federal functional classification system in the WAMPO region.

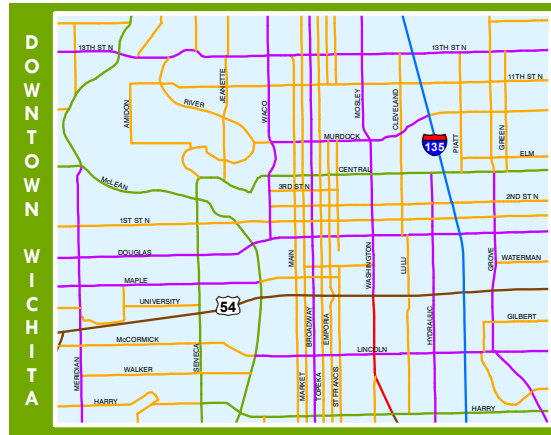
### Next Steps:

- The TAC's recommendation will be presented at the Transportation Policy Body meeting on May 10, 2022 for their final action.
- The FC map will then be sent to the Kansas Department of Transportation (KDOT) for approval, then submitted to the Federal Highway Administration (FHWA) for approval.

### Attachment(s):

- [2019 Approved Federal Roadway Functional Classification Map](#)
- [2022 Proposed Federal Roadway Functional Classification Map](#)
- [2022 Proposed Federal Roadway Functional Classification Map Views Showing Locations of Changes from 2019 Approved Map](#)
- [2022 Proposed Federal Roadway Functional Classification Changes List](#)





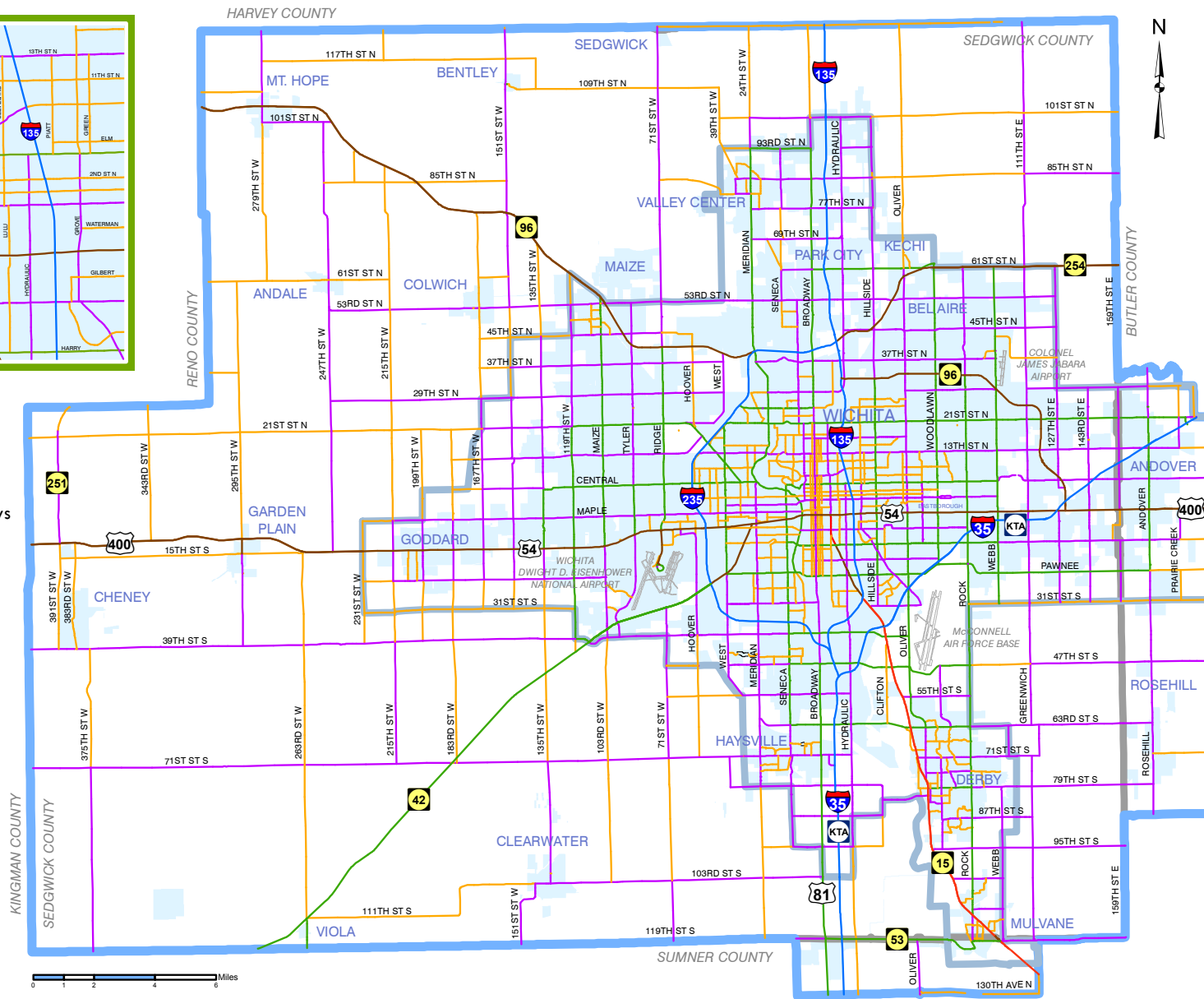
**Functional Classification**

- Interstates
- Other Urban Freeways/Expressways
- Other Principal Arterials
- Minor Arterials
- Major Collectors
- Minor Collectors

**Plan Boundaries**

- WAMPO Planning Area
- County Boundaries
- Cities Boundaries
- Urbanized Area Boundary

Approved by WAMPO  
TPB on May 14, 2019



**What is Functional Classification?**

Functional Classification is the process by which roadways are classified by the service they provide. The two services they provide are access and mobility. The amount of each service that the specific roadway provides determines how it is classified.

**Functional Classification Systems**

**Arterial System**

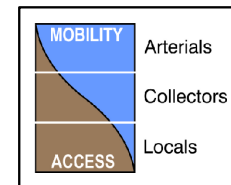
The arterial system is comprised of the Principal Arterial System and the Minor Arterial System. The Principal Arterial System, which includes interstates, other freeways and expressways, and other principal arterials, is a network designated for the highest traffic volumes, the longest trips, serves major centers of activity, and/or connects major urban areas. The Minor Arterial System should interconnect with the Principal Arterial System and provide service to trips of moderate length at somewhat of a lower level of travel mobility than principal arterials.

**Collector System**

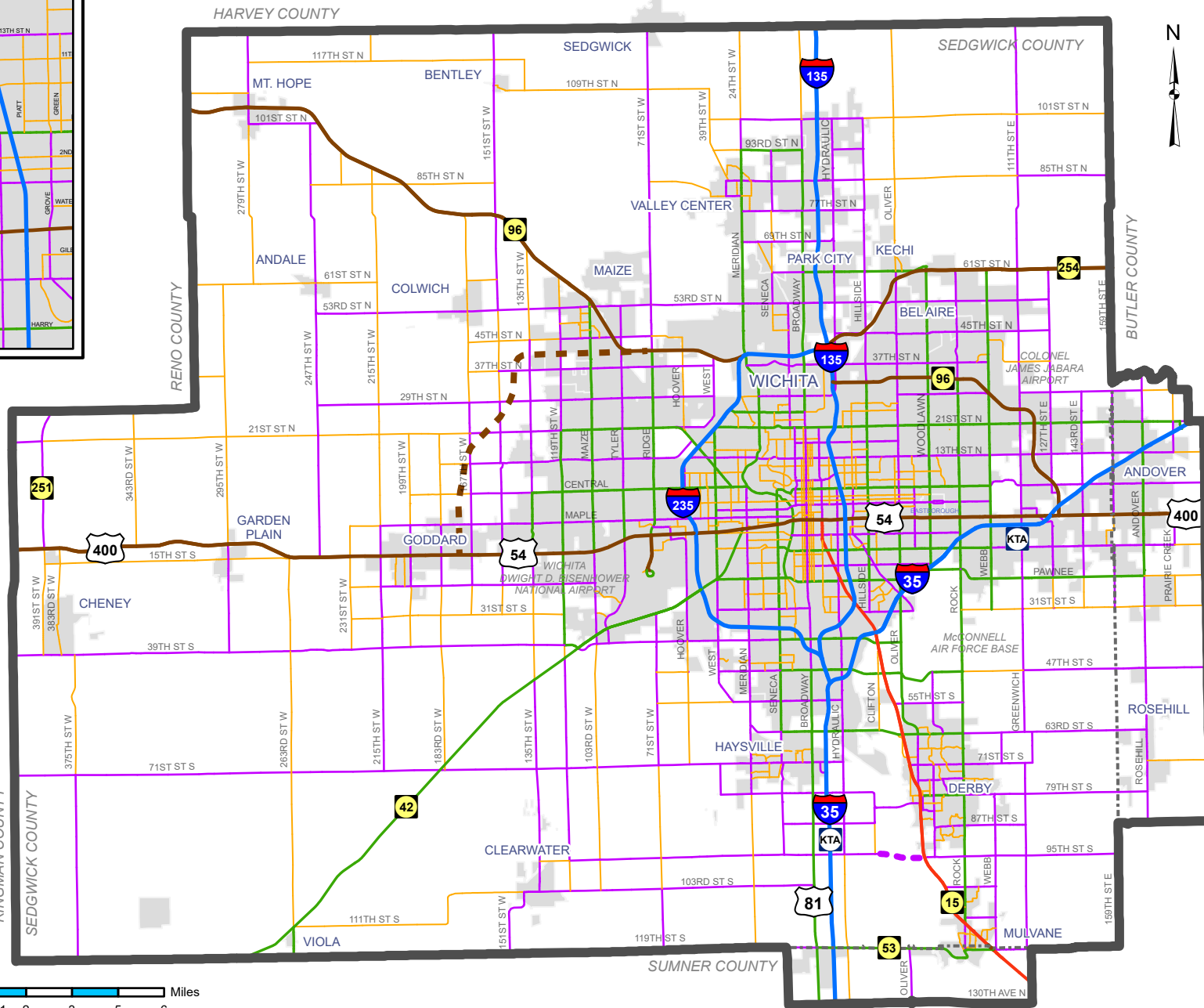
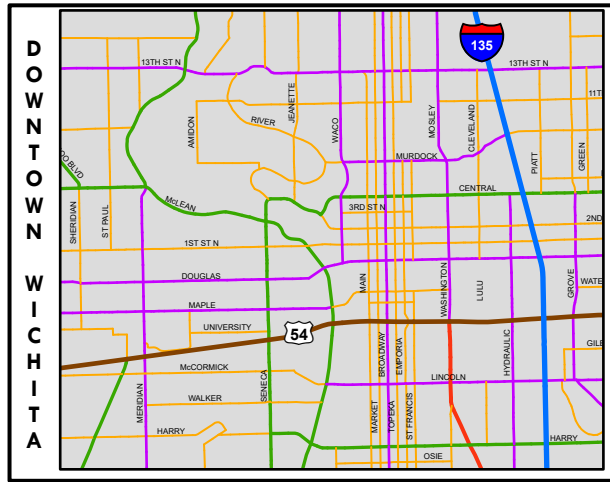
The collector system provides land access and traffic circulation within residential neighborhoods, commercial and industrial areas.

**Local System (Not shown on this map.)**

The local system is comprised of all roadways not on one of the higher systems. The purpose of this system is to provide access to land and the higher order systems.



# Federal Roadway Functional Classification Map



**Functional Classification**

- Interstates
- Other Urban Freeways/Expressways
- Other Principal Arterials
- Minor Arterials
- Major Collectors
- Minor Collectors
- - - Future roads (example)

**Plan Boundaries**

- WAMPO Planning Area
- County Boundaries
- Cities Boundaries

**What is Functional Classification?**

Functional Classification is the process by which roadways are classified by the service they provide. The two services they provide are access and mobility. The amount of each service that the specific roadway provides determines how it is classified.

**Functional Classification Systems**

**Arterial System**

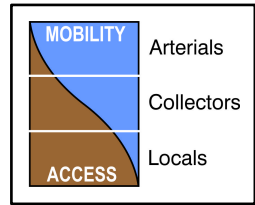
The arterial system is comprised of the Principal Arterial System and the Minor Arterial System. The Principal Arterial System, which includes interstates, other freeways and expressways, and other principal arterials, is a network designated for the highest traffic volumes and longest trips, serves major centers of activity, and/or connects major urban areas. The Minor Arterial System should interconnect with the Principal Arterial System and provide service to trips of moderate length at somewhat of a lower level of travel mobility than principal arterials.

**Collector System**

The collector system provides land access and traffic circulation within residential neighborhoods and commercial and industrial areas.

**Local System (Not shown on this map.)**

The local system is comprised of all roadways not on one of the higher systems. The purpose of this system is to provide access to land and to the higher order systems.



Produced by: WAMPO  
 Date Exported: 4/18/2022  
 Folder: T:\Plans & Projects\Functional Classification\FunClassKDOT2021\  
 The information shown on this map is compiled from various sources made available to us which we believe to be reliable.



# 2022 Proposed Federal Roadway Functional Classification Map

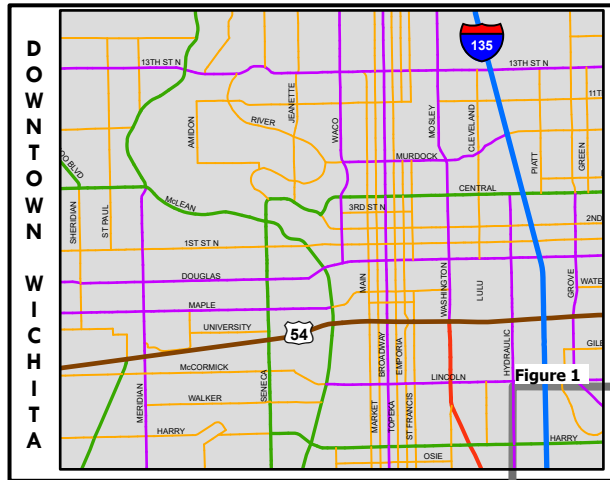


Figure 1

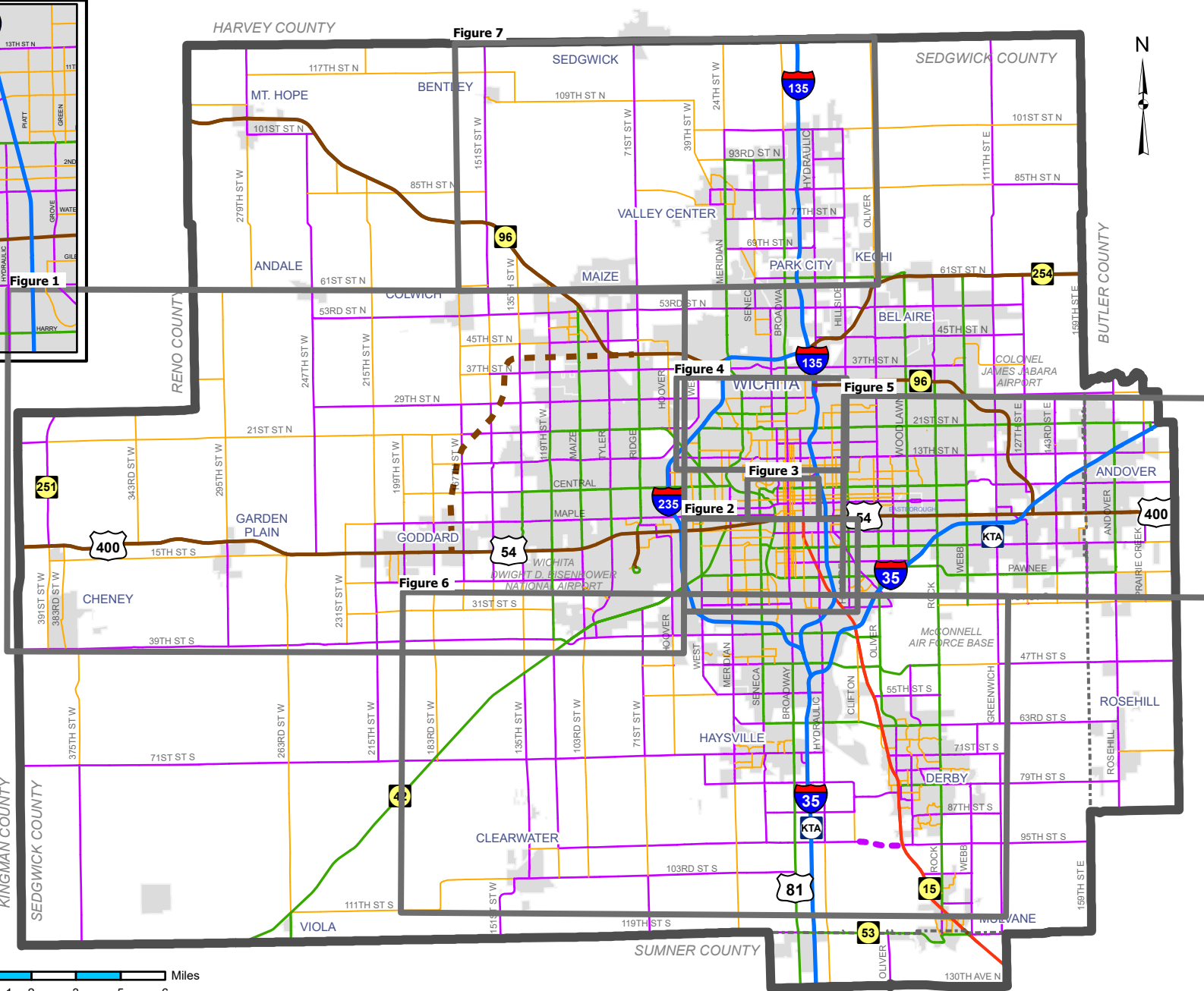


Figure 7

Figure 4

Figure 5

Figure 2

Figure 3

Figure 6

**Functional Classification**

- Interstates
- Other Urban Freeways/Expressways
- Other Principal Arterials
- Minor Arterials
- Major Collectors
- Minor Collectors
- - - Future roads (example)

**Plan Boundaries**

- WAMPO Planning Area
- County Boundaries
- Cities Boundaries

Produced by: WAMPO  
 Date Exported: 4/18/2022  
 Folder: T:\Plans & Projects\Functional Classification\FunClassKDOT2021\  
 The information shown on this map is compiled from various sources made available to us which we believe to be reliable.



**What is Functional Classification?**

Functional Classification is the process by which roadways are classified by the service they provide. The two services they provide are access and mobility. The amount of each service that the specific roadway provides determines how it is classified.

**Functional Classification Systems**

**Arterial System**

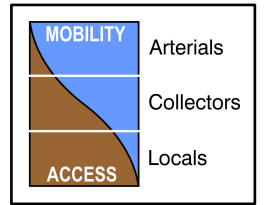
The arterial system is comprised of the Principal Arterial System and the Minor Arterial System. The Principal Arterial System, which includes interstates, other freeways and expressways, and other principal arterials, is a network designated for the highest traffic volumes and longest trips, serves major centers of activity, and/or connects major urban areas. The Minor Arterial System should interconnect with the Principal Arterial System and provide service to trips of moderate length at somewhat of a lower level of travel mobility than principal arterials.

**Collector System**

The collector system provides land access and traffic circulation within residential neighborhoods and commercial and industrial areas.

**Local System (Not shown on this map.)**

The local system is comprised of all roadways not on one of the higher systems. The purpose of this system is to provide access to land and to the higher order systems.



# 2022 Proposed Federal Roadway Functional Classification Map



# 2022 Proposed Federal Roadway Functional Classification Map

Figure 1:

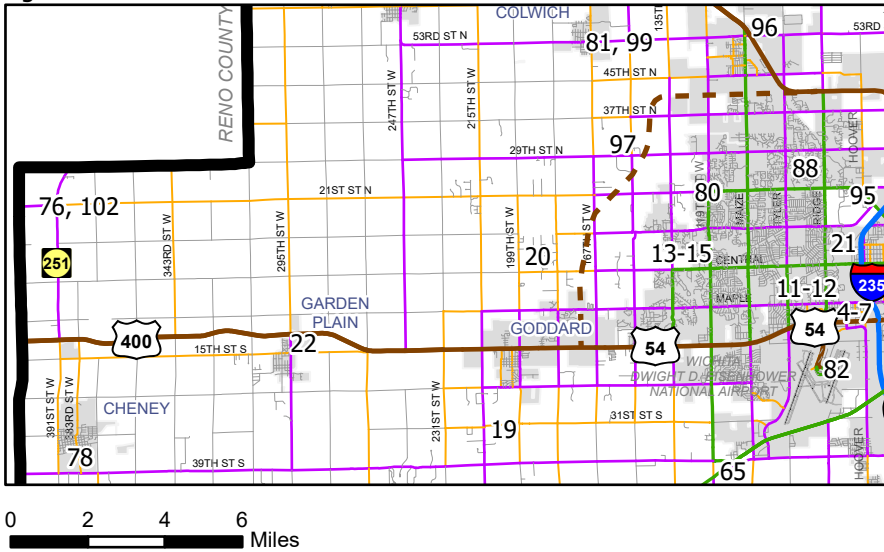


Figure 2:

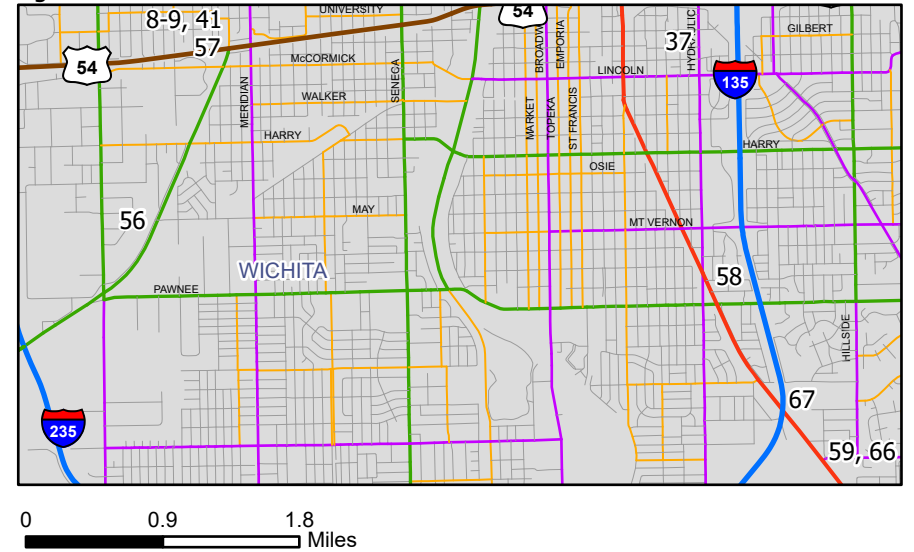


Figure 3:

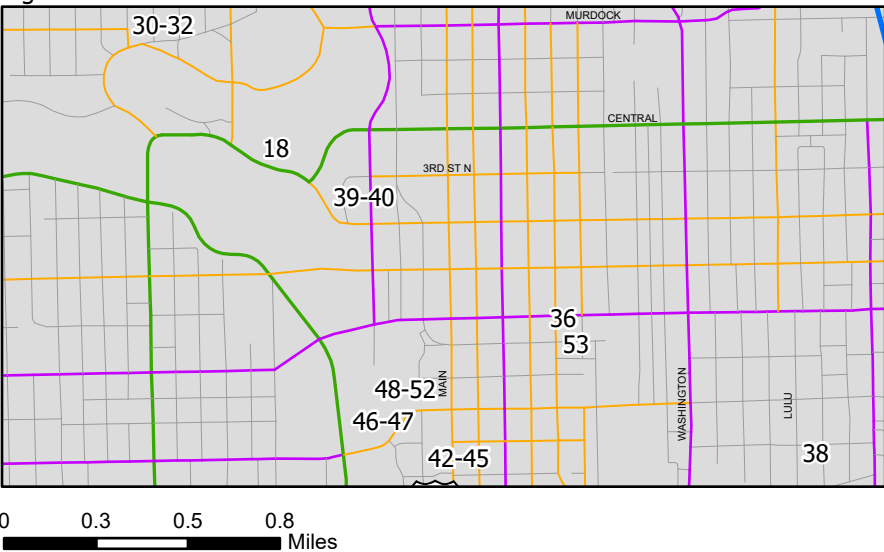
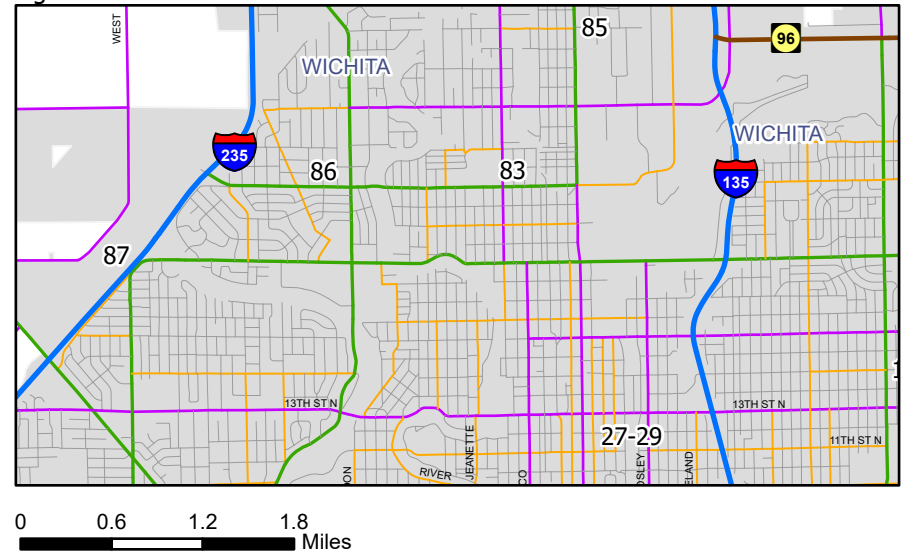


Figure 4:



Produced by: WAMPO  
Date Exported: 4/18/2022  
Folder: T:\Plans & Projects\Functional Classification\FunClassKDOT2021\  
The information shown on this map is compiled from various sources made available to us which we believe to be reliable.



# 2022 Proposed Federal Roadway Functional Classification Map

Figure 5:

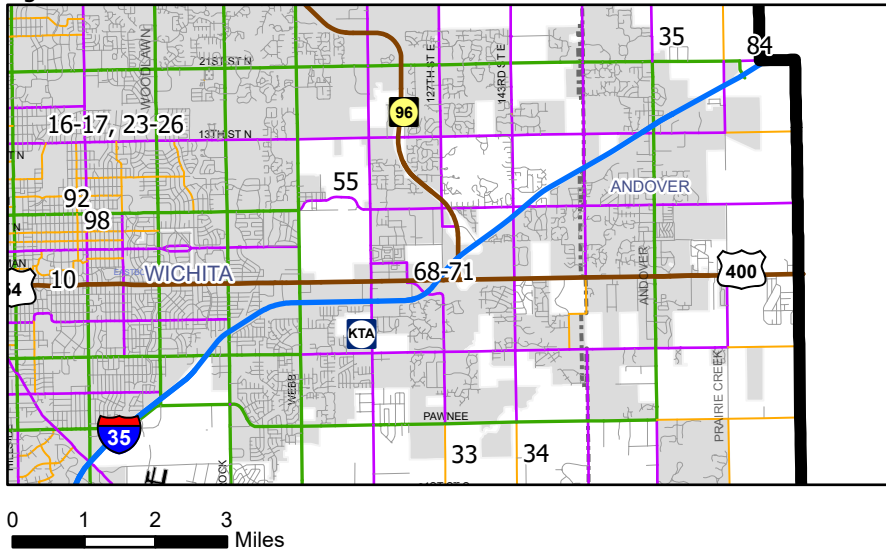


Figure 6:

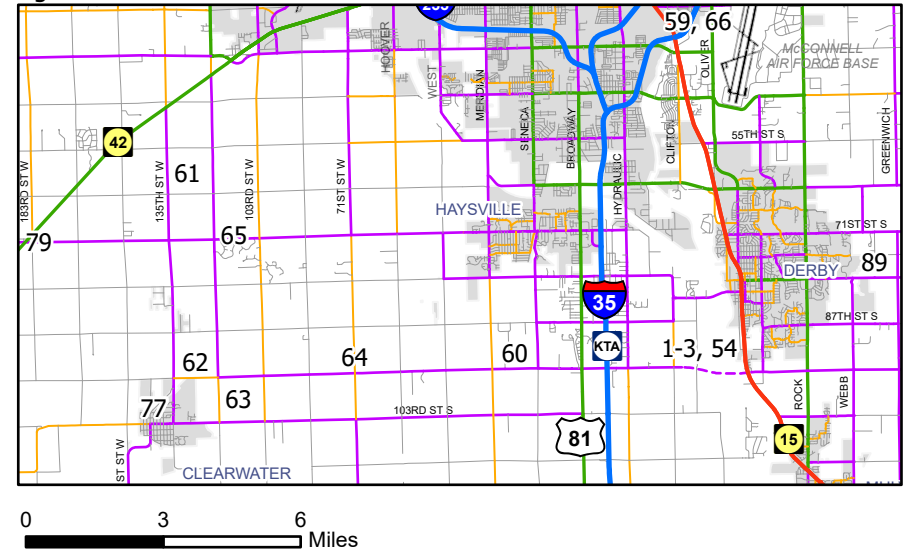
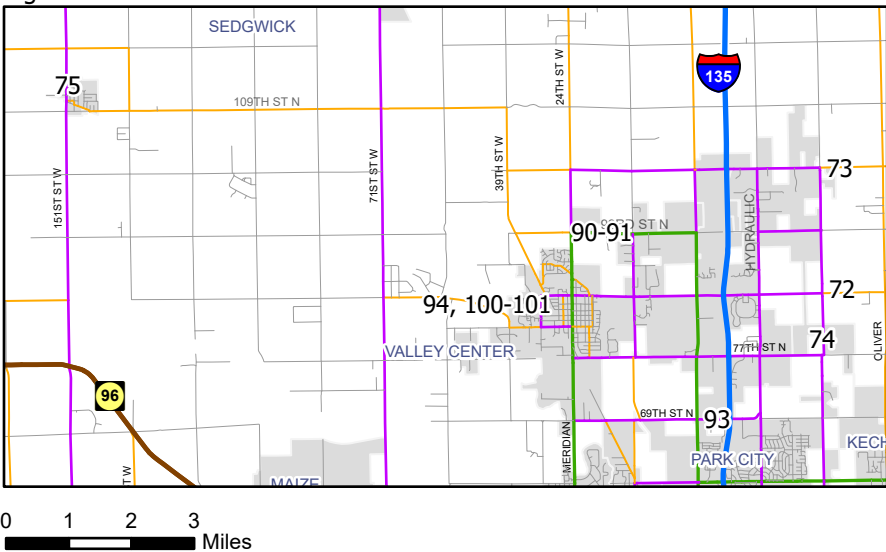


Figure 7:





# 2022 Proposed Federal Roadway Functional Classification Changes

Change Number	County	City	Street	From	To	Current FC	Proposed FC	Change Description	Distance (ft)
1	Sedgwick	Unincorporated	E 95th St S before S Hillside St	S Hydraulic St	S Hillside St	6	5	From minor collector to major collector	5,308.34
2	Sedgwick	Unincorporated	E 95th St S after S Hillside St	S Hillside St	S Bluff St	7	5	From local to major collector	901.20
3	Sedgwick	Derby/Unincorporated	Arc-95	S Bluff St	E 95 St S	-	5	Add road as a major collector	8,110.95
4	Sedgwick	Wichita	S Dugan RD	W Kellogg Dr	W Taft St	6	5	From minor collector to major collector	1,198.32
5	Sedgwick	Wichita	W Taft St	Dugan RD	Eisenhower Airport Pkwy	6	5	From minor collector to major collector	2,979.07
6	Sedgwick	Wichita	W Taft St	Eisenhower Airport Pkwy	W University St	7	6	From local to minor collector	764.25
7	Sedgwick	Wichita	S Airport RD	W Pueblo Dr	W Kellogg Dr	6	7	From minor collector to local	1,199.96
8	Sedgwick	Wichita	W University St/W 32nd St S by S Edward St	S Edwards St	Dead End	6	7	From minor collector to local	657.20
9	Sedgwick	Wichita	S Edward St	W University St/W 32nd St	W Kellogg Ave	7	6	From local to minor collector	798.08
10	Sedgwick	Wichita	S Bluff St	S Circle Dr	Dead End	6	7	From minor collector to local	710.93
11	Sedgwick	Wichita	S Woodchuck St by W University St/W Taft St	W University St	W Kellogg Dr	6	7	From minor collector to local	1,488.58
12	Sedgwick	Wichita	W University St by S Woodchuck	W Taft St	S Woodchuck St	7	6	From local to minor collector	1,915.06
13	Sedgwick	Wichita	W 4th St N to W Central Ave	W Central Ave	N 135 St S	4	7	From minor arterial to local	1,854.89
14	Sedgwick	Wichita	W Central Ave to W 4th St N	W 4th St N	N 135 St W	4	4	Realignment	-
15	Sedgwick	Wichita	N 135th St W	W 4th St N	W Central Ave	5	4	From major collector to minor arterial	284.13
16	Sedgwick	Wichita	E 15th St N	N Fairmount St	N Fairmount St	6	-	Remove segment/realignment	24.00
17	Sedgwick	Wichita	N Fairmount St	E 15th St N	E 15th St N	7	-	Remove segment/realignment	28.50
18	Sedgwick	Wichita	West Central Ave from Seneca to Veterans Pkwy	S Seneca St	Veterans Pkwy	4	4	Realignment	-
19	Sedgwick	Unincorporated	S 215 St W from MacArthur to 23rd	W MacArthur Rd S	W 23 St S	6	5	From minor collector to major collector	10,593.85
20	Sedgwick	Unincorporated	W Central St from N 199th St W to N 183rd St W	N 199 St W	N 183 St W	7	6	From local to minor collector	5,264.11
21	Sedgwick	Wichita	N Hoover Rd from Central to W 13 St N	W Central Ave	W 13 St N	6	5	From minor collector to major collector	5,531.41
22	Sedgwick	Garden Plain	S 295th St. West	W 15th St S	US 54	2	5	From Other Urban Freeways/Expressways to major collector	2,525.35
23	Sedgwick	Wichita	E 15th St N	N Hillside St	N Fairmount St	6	7	From minor collector to local	709.44
24	Sedgwick	Wichita	E 15th St N	N Fairmount St	E Regents Ln	6	7	From minor collector to local	1,822.94
25	Sedgwick	Wichita	E Regents Ln	E 15 St N	N Belmont St	6	7	From minor collector to local	1,725.51
26	Sedgwick	Wichita	N Belmont St	E Regents Ln	E 17 St N	6	7	From minor collector to local	312.38
27	Sedgwick	Wichita	East 11th St	N St Francis St	N Santa Fe St	6	7	From minor collector to local	341.80
28	Sedgwick	Wichita	East 11th St	N Santa Fe St	N Mead St	6	-	Remove segment	472.42
29	Sedgwick	Wichita	East 11th St	N Mead St	N Mosley St	6	7	From minor collector to local	590.70
30	Sedgwick	Wichita	W Murdock St	N Spaulding St	W Stackman Drive	6	7	From minor collector to local	547.65
31	Sedgwick	Wichita	W Spaulding St	W Stackman Dr	W Murdock St	6	7	Realignment and change from minor collector to local	315.66
32	Sedgwick	Wichita	W Stackman Dr	N Spaulding St	W Murdock St	7	6	From local to minor collector	620.12
33	Sedgwick	Wichita/Unincorporated	S 127 E from E 31st S to E Pawnee	E 31 St S	E Pawnee	5	6	From major collector to minor collector	5,239.47
34	Sedgwick	Unincorporated	S 143rd St E from E 31st S to E Pawnee	E 31 St S	E Pawnee	5	6	From major collector to minor collector	5,278.09
35	Butler Co	Andover	Sliver of Andover RD near Cornerstone	N Cornerstone Pkwy	N Cornerstone Pkwy	4	5	From minor arterial to major collector/Realignment	46.58
36	Sedgwick	Wichita	S St Francis St South of Douglas	E English St	E Douglas Ave	6	7	From minor collector to local	624.90
37	Sedgwick	Wichita	S Lulu St south of Kellogg	E Kellogg Dr S	E Lincoln St	6	7	From minor collector to local	2,471.77
38	Sedgwick	Wichita	S Lulu St north of Kellogg	E Kellogg Dr N	E Douglas Ave	6	7	From minor collector to local	2,587.28
39	Sedgwick	Wichita	Veterans Pkwy from Central to Riverview	Central Ave	Riverview St	7	6	From local to minor collector/Realignment	864.39
40	Sedgwick	Wichita	W 2nd St N from Riverview to N Waco St	Riverview St	N Waco St.	7	6	From local to minor collector	338.39
41	Sedgwick	Wichita	W University	Dead end	Meridian	6	-	Removed non existent road	81.60
42	Sedgwick	Wichita	S Wichita St	W Waterman St	W Kellogg Ave	7	7	Realignment	-
43	Sedgwick	Wichita	W Dewey St	S Wichita St	Dead End	7	-	Remove segment	267.32
44	Sedgwick	Wichita	W Dewey St	S Wichita St	S Main St	7	7	Realignment	-
45	Sedgwick	Wichita	S Water St	W Waterman St	W Kellogg Ave	7	7	Realignment	-
46	Sedgwick	Wichita	Waterwalk Pl	S Wichita St	S Water St	-	7	Add segment	407.38
47	Sedgwick	Wichita	W Lewis St	S Wichita St	S Main St	6	-	Remove segment	372.45
48	Sedgwick	Wichita	W Lewis St	S McLean Blvd	S Wichita St	6	6	Realignment	-
49	Sedgwick	Wichita	W Waterman St	S Water St	S Market St	7	6	From local to minor collector	384.93
50	Sedgwick	Wichita	W Waterman St	S Wichita St	Dead End	7	-	Remove segment	379.92
51	Sedgwick	Wichita	W Waterman St	S Water St	S Wichita St	7	6	Realignment/From local to minor collector	-
52	Sedgwick	Wichita	S Wichita St	W Waterman St	W Lewis St	7	-	Remove segment	451.94
53	Sedgwick	Wichita	E English St	S Emporia St	S Commerce St	-	7	Add road as local	567.82
54	Sedgwick	Derby	E 95th St S	S Woodlawn Blvd	K-15	5	5	Realignment	-

Change Number	County	City	Street	From	To	Current FC	Proposed FC	Change Description	Distance (ft)
55	Sedgwick	Unincorporated	E Central Ave between Webb and Greenwich	Dead end	Dead End	-	5	Add missing segment	545.96
56	Sedgwick	Wichita	Southwest Blv	I-235	S Edward St	2	4	From Other Freeway/Expressway to minor arterial	12,847.43
57	Sedgwick	Wichita	S Edward St	Southwest Blv	W Kellogg Ave	2	4	From Other Freeway/Expressway to minor arterial	172.40
58	Sedgwick	Wichita	Southeast Blv	E Harry St	I-135	2	3	From Other Freeway/Expressway to other principal arterial	10,138.48
59	Sedgwick	Wichita	K-15	E 31 St S	I-135	-	-	Realignment	-
60	Sedgwick	Unincorporated	W 95th St S	S Seneca St	S Meridian Ave	6	5	From minor collector to major collector	5,295.88
61	Sedgwick	Unincorporated	S 135th St W	W 71st St S	K-42	6	5	From minor collector to major collector	15,318.91
62	Sedgwick	Unincorporated	W 95th St S	S 135th St W	S 119th St W	7	6	From local to minor collector	5,131.06
63	Sedgwick	Unincorporated	S 119th St W	W 95th St S	W 103rd St S	7	6	From local to minor collector	5,212.63
64	Sedgwick	Unincorporated	W 95th St S	S Meridian Ave	S 119th St W	7	5	From local to major collector	31,644.38
65	Sedgwick	Unincorporated	S 119th St W	W 95th St S	K-42	7	5	From local to major collector	35,284.23
66	Sedgwick	Unincorporated	Southeast Blv	Wichita City Limits	I-35	2	3	From Other Freeway/Expressway to other principal arterial	149.58
67	Sedgwick	Wichita	Southeast Blv	E Dunham St	I-135	7	-	Remove segment	1,421.10
68	Sedgwick	Wichita	S 127th St E	E Gilbert St	E Kellogg Dr	-	-	Realignment	-
69	Sedgwick	Wichita	E Kellogg Dr (frontage road)	S 127th St E	S Zelta St	-	5	Add segment	1,292.57
70	Sedgwick	Wichita	S Zelta St	E Kellogg Dr	E Waterman St	7	5	From local to major collector/ Realignment	1,485.72
71	Sedgwick	Wichita	E Waterman St	S Zelta St	S Greenwich Rd	7	5	From local to major collector	2,666.04
72	Sedgwick	Park City	N Hillside St	N. of 85th St.	S. of 85th St.	6	5	From minor collector to major collector	1,057.33
73	Sedgwick	Park City	N Hillside St	S. of 101st St.	101st St.	6	5	From minor collector to major collector	235.64
74	Sedgwick	Unincorporated	E 77th St N	N Hillside St	N Hillside St	6	5	From minor collector to major collector	177.21
75	Sedgwick	Bentley	W Main St	N 151st St W	S Davidson Ave	4	6	From minor arterial to minor collector	319.91
76	Sedgwick	Unincorporated	N 391st St W	Reno County Line	K-251	6	5	From minor collector to major collector	4,762.88
77	Sedgwick	Clearwater	N 4th Ave	Janet Ave	E Janet Ave	6	5	From minor collector to major collector	142.78
78	Sedgwick	Cheney	W Macarthur Rd S	S 383th St W	S Main St	6	5	From minor collector to major collector	395.88
79	Sedgwick	Unincorporated	W 71st St S	W. of K-42	E. of K-42	6	5	From minor collector to major collector	477.94
80	Sedgwick	Wichita	W 21st St N	W. of N Teal Brook St	N Teal Brook St	4	5	From minor arterial to major collector	47.92
81	Sedgwick	Colwich	W Chicago Ave	S Colorado Ave	S 5th St	6	5	From minor collector to major collector	37.12
82	Sedgwick	Wichita	Eisenhower Airport Pkwy (on loop at airport)	Eisenhower Airport Pkwy	Eisenhower Airport Pkwy	5	4	From major collector to minor arterial	33.85
83	Sedgwick	Wichita	W 25th St N	N Rosenthal Ave	N Jackson Ave	5	4	From major collector to minor arterial	55.81
84	Butler Co	Unincorporated	E 21st St	SW Mulberry Rd	E. of SW Mulberry Rd	6	5	From minor collector to major collector	35.17
85	Sedgwick	Wichita	N Broadway St	E 33rd St N	E 33rd St N	5	4	From major collector to minor arterial	49.95
86	Sedgwick	Wichita	W 25th St N	N Clarence St	N Clarence St	5	4	From major collector to minor arterial	21.15
87	Sedgwick	Wichita	W 21st St N	W Cornelison St	N West St	6	4	From minor collector to minor arterial	75.29
88	Sedgwick	Wichita	N Tyler Rd	W Northridge St	W Northridge St	6	5	From minor collector to major collector	56.69
89	Sedgwick	Unincorporated	E 79th St S	E. of S Webb Rd	W. of S Greenwich Rd	4	5	From minor arterial to major collector	43.07
90	Sedgwick	Unincorporated	W 93rd St N	N Meridian St	E. of N Meridian St	6	4	From minor collector to minor arterial	47.12
91	Sedgwick	Unincorporated	N Meridian St	N. of W 93rd St N	W 93rd St N	6	5	From minor collector to major collector	9.08
92	Sedgwick	Wichita	E Central Ave	N Pershing St	N Pershing St	6	4	From minor collector to minor arterial	28.94
93	Sedgwick	Park City	N Broadway St	E 69th St N	S. of E 69th St N	5	4	From major collector to minor arterial	19.43
94	Sedgwick	Valley Center	W 5th St	N Birch St	N Birch St	6	5	From minor collector to major collector	25.16
95	Sedgwick	Unincorporated	N Northshore Blvd	Horseshoe Dr	N Vics Lake Dr	6	7	From minor collector to local	81.84
96	Sedgwick	Maize	N Maize Rd	K-96	S. of K-96	6	4	From minor collector to minor arterial	65.19
97	Sedgwick	Multiple	Northwest Expressway	K-96	US-54	-	2	Add road as urban freeway/expressway	59,277.79
98	Sedgwick	Wichita	N Pershing St	E Central Ave	E 3rd St N	6	6	Realignment	-
99	Sedgwick	Colwich	W Chicago Ave	4th St	S 3rd St	6	5	From minor collector to major collector	63.83
100	Sedgwick	Valley Center	N Birch St	W 5th St	Albert St	7	7	Realignment	-
101	Sedgwick	Valley Center	N West St	N. of W 3rd St	W 3rd St	6	5	From minor collector to major collector	57.84
102	Sedgwick	Unincorporated	W 21st St N	Kingman County Line	K-251	6	5	From minor collector to major collector	4,944.77



**Agenda Item 4C: Update  
2019 & 2020 Crash Maps/5-Year Rolling Average Table**

Ashley Bryers, Transportation Planning Manager  
Mark Kruep, GIS Analyst/Transportation Planner  
Dora Gallo, Transportation Planner

**Background**

Staff evaluated crashes in the WAMPO region provided by the Kansas Department of Transportation (KDOT) for 2019 and 2020. Staff also developed the 5-year rolling averages for fatalities, serious injuries, and non-motorized fatalities and serious injuries.

	Fatalities	Serious Injuries	Non-Motorized Fatalities & Serious Injuries
2019	58	215	42
2020	64	259	45

For information on the five-year rolling average for 2012 through 2020, see the attachment, “Five-Year Rolling Average Table.”

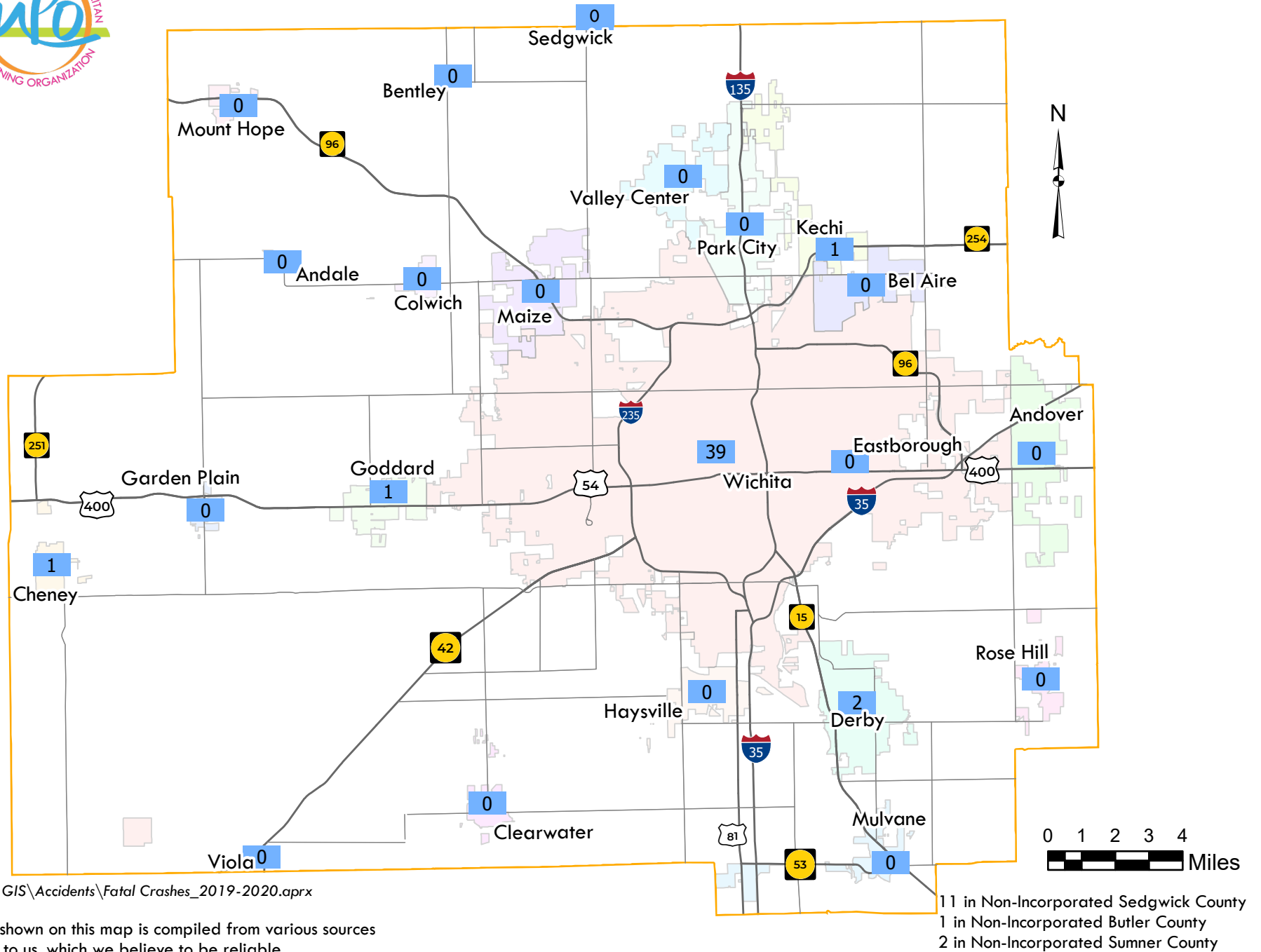
**Attachments:**

- 2019 Fatalities
- 2019 Serious Injuries
- 2019 Non-Motorized Fatalities & Serious Injuries
- 2020 Fatalities
- 2020 Serious Injuries
- 2020 Non-Motorized Fatalities & Serious Injuries
- Five-Year Rolling Average Table





# Crash Fatalities in the WAMPO Region, 2019



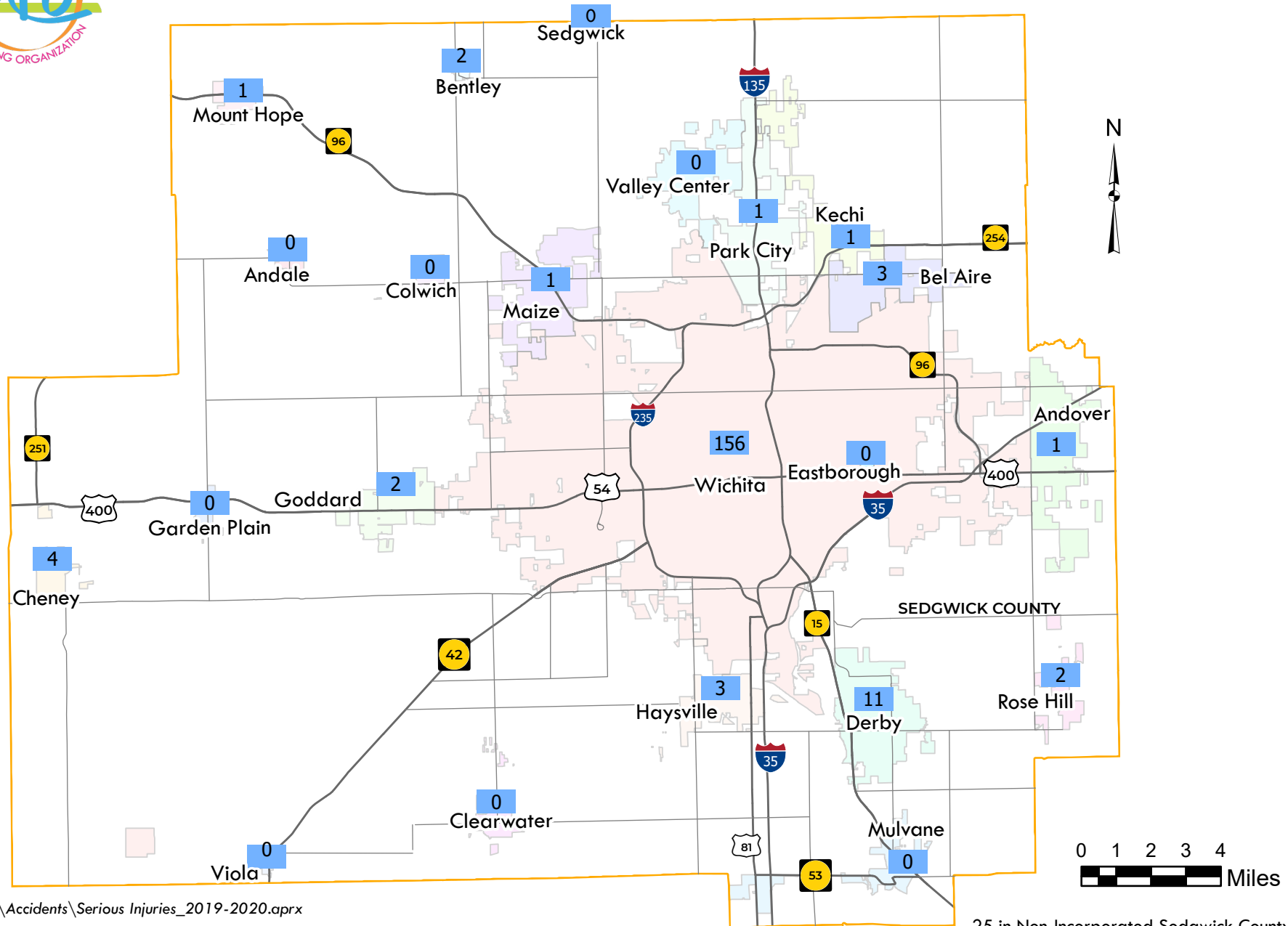
4/19/2022

Path: T:\WAMPO GIS\Accidents\Fatal Crashes\_2019-2020.aprx

The information shown on this map is compiled from various sources made available to us, which we believe to be reliable.



# Serious Injuries in the WAMPO Region, 2019



4/19/2022

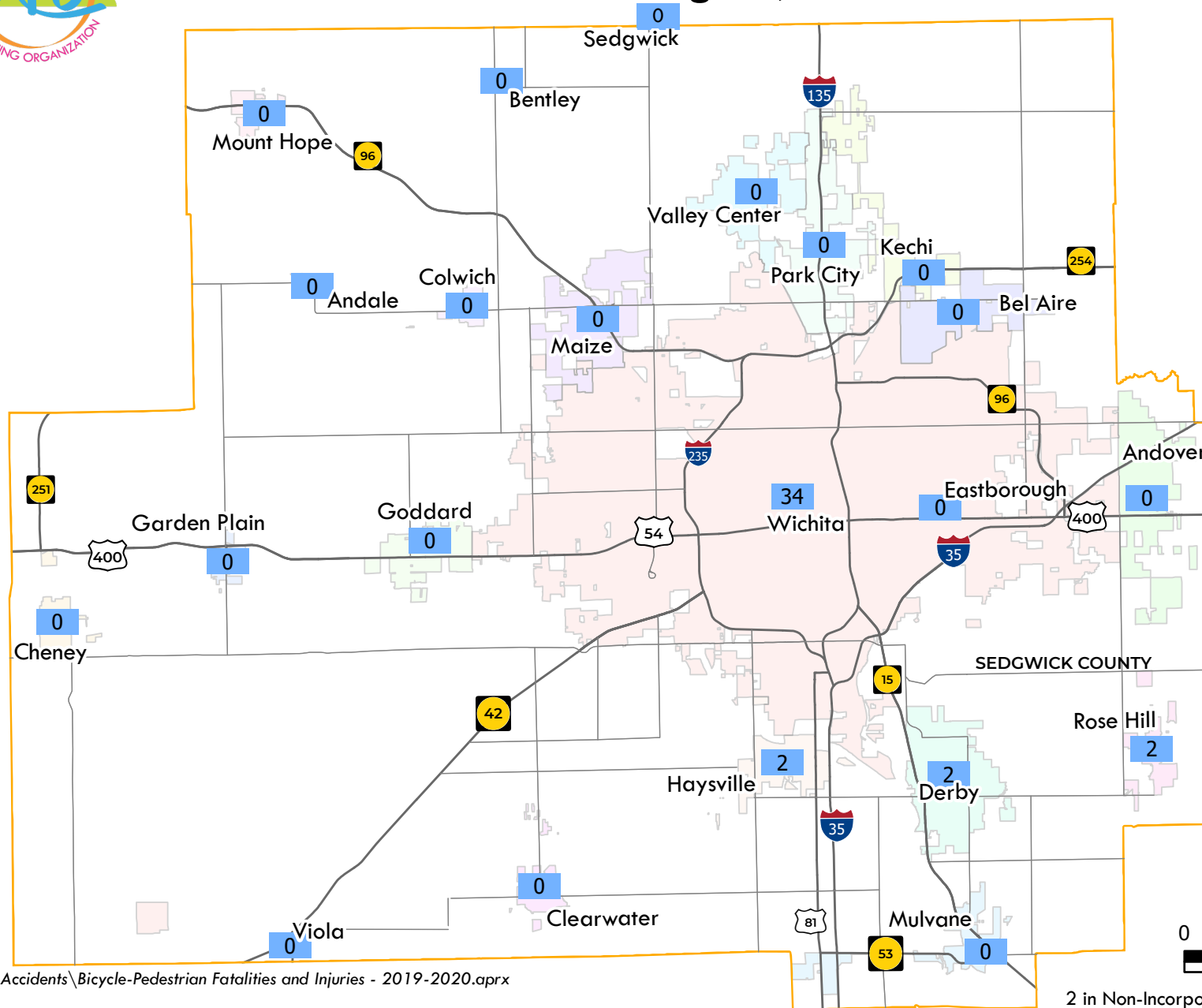
Path: T:\WAMPO GIS\Accidents\Serious Injuries\_2019-2020.aprx

The information shown on this map is compiled from various sources made available to us, which we believe to be reliable.

25 in Non-Incorporated Sedgwick County  
 1 in Non-Incorporated Butler County  
 1 in Non-Incorporated Sumner County



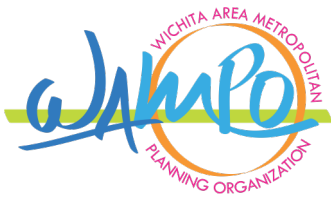
# Non-Motorized Fatalities & Serious Injuries in the WAMPO Region, 2019



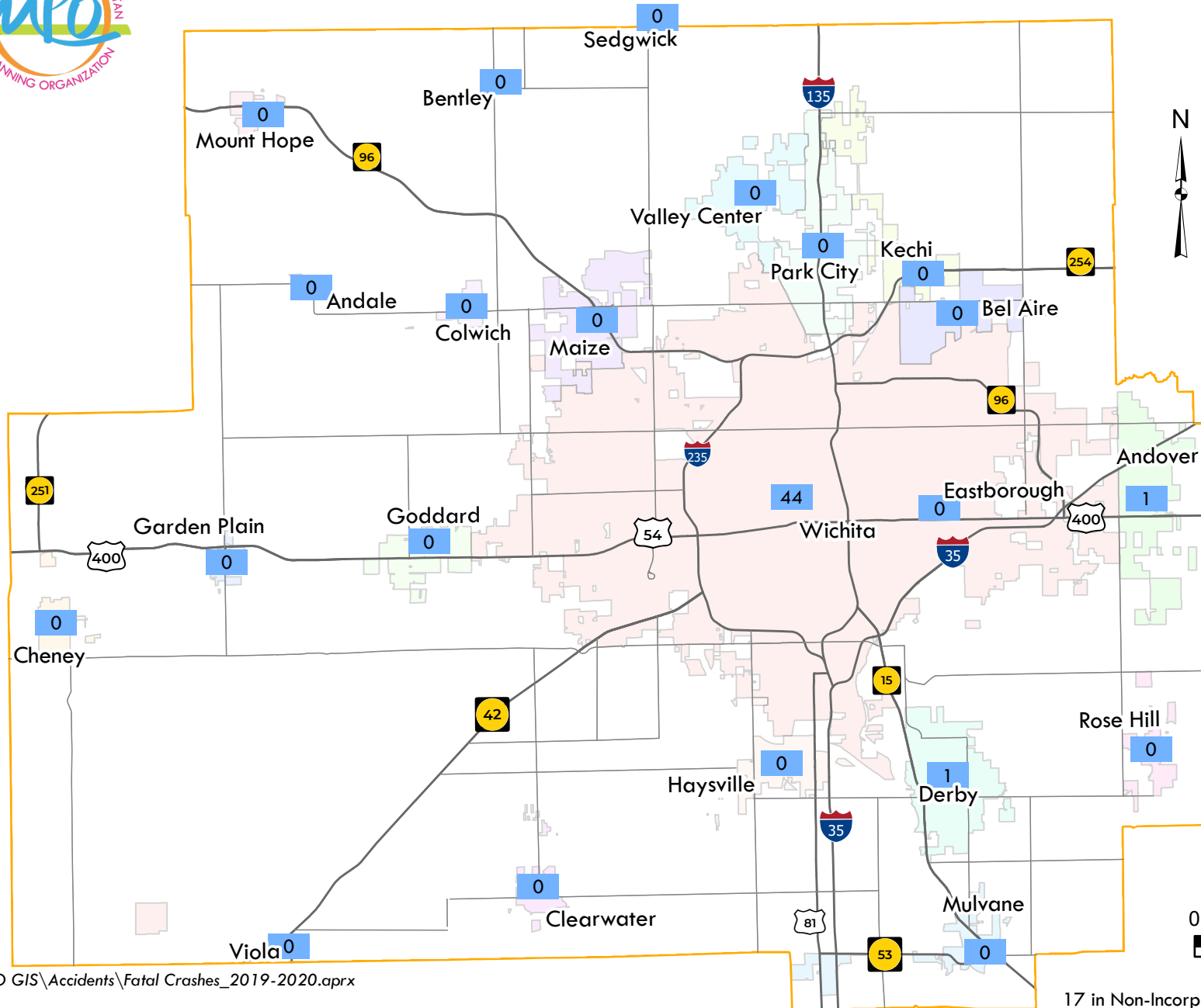
4/19/2022  
 Path: T:\WAMPO GIS\Accidents\Bicycle-Pedestrian Fatalities and Injuries - 2019-2020.aprx

The information shown on this map is compiled from various sources made available to us, which we believe to be reliable.

2 in Non-Incorporated Sedgwick County  
 0 in Non-Incorporated Butler County  
 0 in Non-Incorporated Sumner County



# Crash Fatalities in the WAMPO Region, 2020



4/19/2022

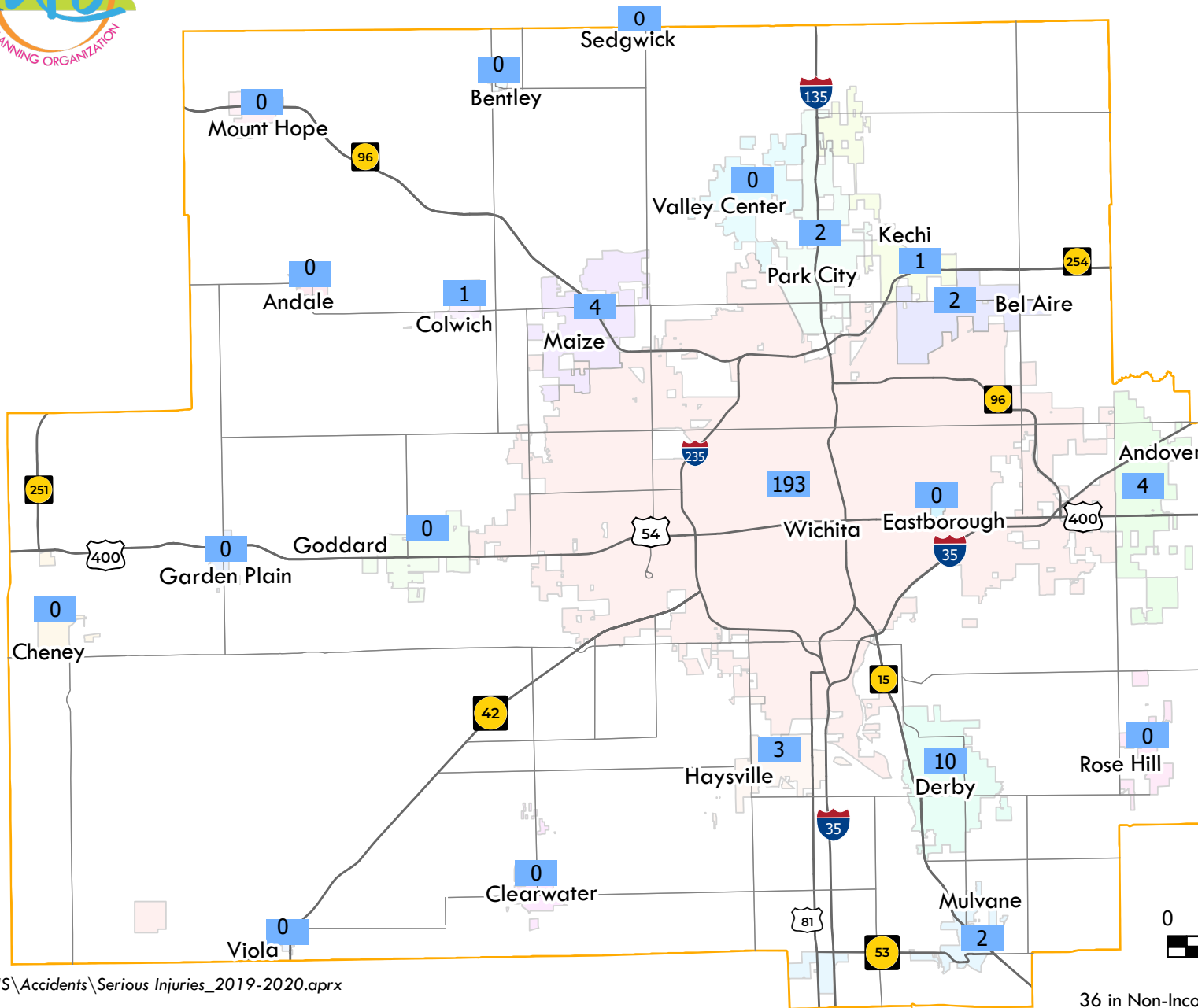
Path: T:\WAMPO GIS\Accidents\Fatal Crashes\_2019-2020.aprx

The information shown on this map is compiled from various sources made available to us, which we believe to be reliable.

17 in Non-Incorporated Sedgwick County  
 0 in Non-Incorporated Butler County  
 1 in Non-Incorporated Sumner County



# Serious Injuries in the WAMPO Region, 2020



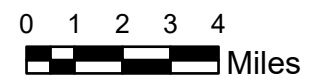
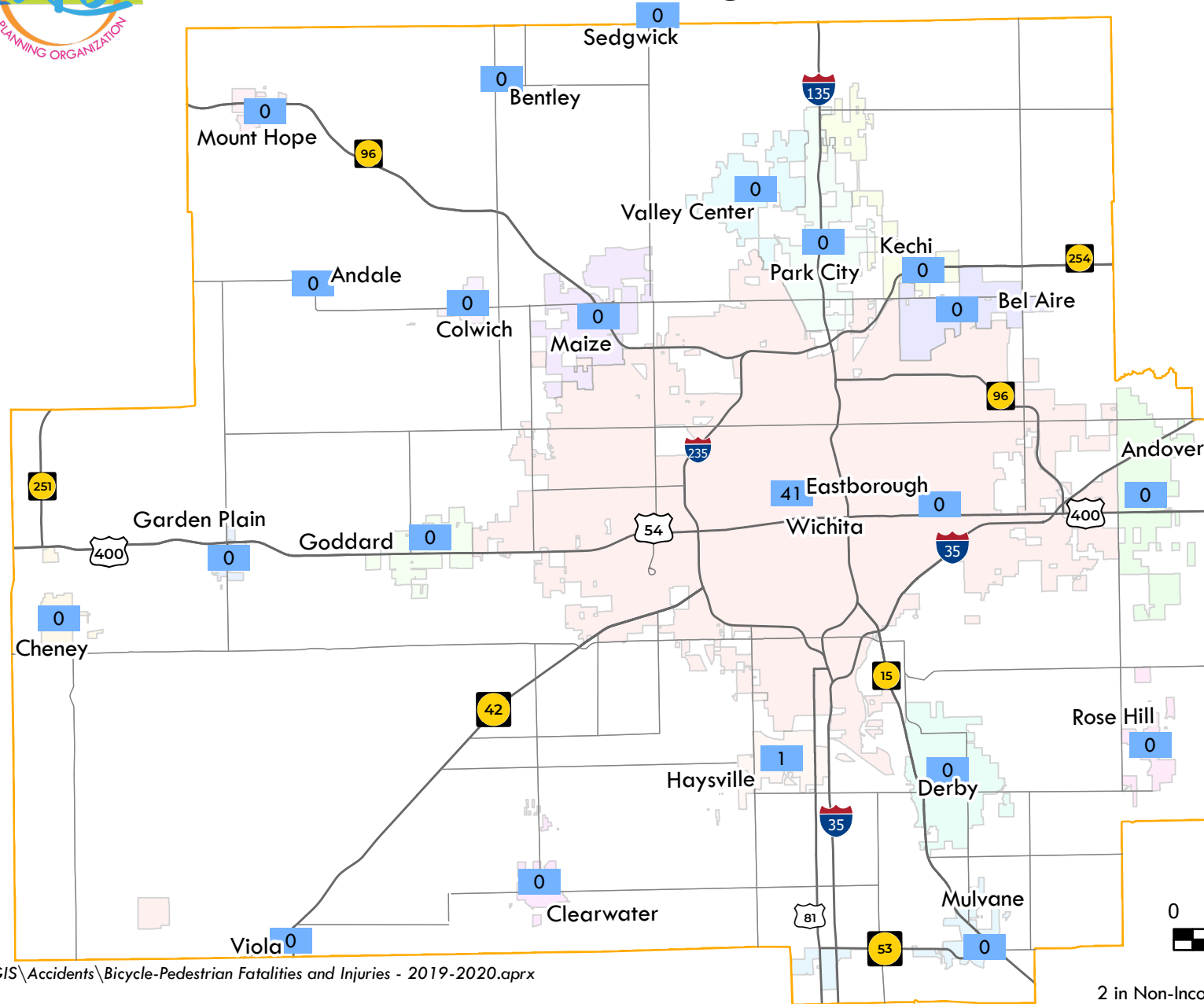
4/19/2022  
 Path: T:\WAMPO GIS\Accidents\Serious Injuries\_2019-2020.aprx

The information shown on this map is compiled from various sources made available to us, which we believe to be reliable.

36 in Non-Incorporated Sedgwick County  
 1 in Non-Incorporated Butler County  
 0 in Non-Incorporated Sumner County



# Non-Motorized Fatalities & Serious Injuries in the WAMPO Region, 2020



4/19/2022  
 Path: T:\WAMPO GIS\Accidents\Bicycle-Pedestrian Fatalities and Injuries - 2019-2020.aprx

The information shown on this map is compiled from various sources made available to us, which we believe to be reliable.

2 in Non-Incorporated Sedgwick County  
 0 in Non-Incorporated Butler County  
 1 in Non-Incorporated Sumner County

	WAMPO											5-year Rolling Averages				
											Baseline	Baseline	Baseline	Baseline	Baseline	
	2012	2013	2014	2015	2016	2017	2018	2019	2020	2021	2012-2016	2013-2017	2014-2018	2015-2019	2016-2020	
Number of Fatalities (Individuals)	43	45	50	53	57	59	74	58	64		49.6	52.8	58.6	60.2	62.4	
Number of Fatality Crash Events	41	41	40	46	55	56	65	53	56		44.6	47.6	52.4	55.0	57.0	
Number of Serious Injuries (Individuals)	223	169	145	156	166	131	136	215	259		171.8	153.4	146.8	160.8	181.4	
Number of Serious Injury Crash Events	180	134	123	129	141	113	123	194	239		141.4	128.0	125.8	140.0	162.0	
Number of Non-Motorized Fatalities & Serious Injuries (Individuals)	31	26	21	39	46	27	24	42	45		32.6	31.8	31.4	35.6	36.8	
Bicycle Rider Fatalities	1	0	2	2	1	1	2	1	1		1.2	1.2	1.6	1.4	1.2	
Bicycle Rider Serious Injuries	8	5	5	8	12	6	5	10	14		7.6	7.2	7.2	8.2	9.4	
Pedestrian Fatalities	8	5	6	7	9	9	9	5	7		7	7.2	8	7.8	7.8	
Pedestrian Serious Injuries	14	16	8	22	24	11	8	26	23		16.8	16.2	14.6	18.2	18.4	

The information shown in this spreadsheet is compiled from various sources made available to us, which we believe to be reliable.



**Agenda Item 4D: Update**  
**US-54 East Kellogg Project**  
Raja Govindaswamy, KDOT  
Brian Kidwell, Garver

KDOT Project Manager, Raja Govindaswamy and IKE Program Management Consultant, Brian Kidwell will provide an update on the East Kellogg project. This project will continue the Kellogg Road improvements east, modernizing East Kellogg from K-96 to 159th Street in Wichita and Andover. The modernization is part of Kansas' IKE (Eisenhower Legacy Transportation) program – a 10-year, \$10 billion program focused on preserving, modernizing and expanding Kansas' transportation system.

The project webpage shows a project schedule – <https://eastkellogg.ksdotike.org>.





**Agenda Item 4E: Update  
FFY2021-FFY2024 TIP Special Amendment**  
Ashley Bryers, Transportation Planning Manager  
Nick Flanders, Senior Transportation Planner

WAMPO received a request from KDOT staff to amend the FFY2021-FFY2024 TIP earlier than the next scheduled amendment, so that certain projects may be accurately reflected in the TIP prior to their expected obligation dates. Subsequently, the administrative contacts for other TIP projects were informed of the upcoming Special Amendment, to provide an opportunity to make changes to their projects at the same time. This Special Amendment is coming between the sixth and seventh scheduled amendments for this TIP. The FFY2021-FFY2024 TIP took effect on October 1, 2020.

**Next Steps:**

- A 30-day Public Comment period opens on April 23, 2022 and will run through May 22, 2022.
- The amendment will be presented to the Technical Advisory Committee (TAC) for its recommendation at the meeting on May 23, 2022.
- The TAC recommendation will be presented at the Transportation Policy Body (TPB) meeting on June 14, 2022.
- The approved amendment will then be sent to the Kansas Department of Transportation (KDOT) to be included in the Statewide Transportation Improvement Program (STIP) for review and consideration by the Federal Highway Administration (FHWA) and the Federal Transit Administration (FTA). Federal approval of the STIP amendment is expected in July 2022.



## WAMPO-REGION POPULATION TRENDS, 1900-2020

Population	1900	1910	1920	1930	1940	1950	1960	1970	1980	1990	2000	2010	2020
<b>Wichita</b>	24,671	52,450	72,217	111,110	114,966	168,279	254,698	276,554	279,272	304,011	344,284	382,368	397,532
<b>Derby</b>	-	235	247	294	256	432	6,458	7,947	9,786	14,699	17,807	22,158	25,625
<b>Andover</b>	-	-	-	-	-	-	186	1,880	2,801	4,047	6,698	11,791	14,892
<b>Haysville</b>	-	-	-	-	-	-	5,836	6,483	8,006	8,364	8,502	10,826	11,262
<b>Park City</b>	-	-	-	-	-	-	2,687	2,529	3,778	5,050	5,814	7,297	8,333
<b>Bel Aire</b>	-	-	-	-	-	-	-	-	-	3,695	5,836	6,769	8,262
<b>Valley Center</b>	343	381	486	896	700	854	2,570	2,551	3,300	3,624	4,883	6,822	7,340
<b>Mulvane</b>	667	1,084	1,239	1,042	940	1,387	2,981	3,185	4,254	4,674	5,155	6,111	6,286
<b>Maize</b>	-	-	189	229	198	266	623	785	1,294	1,520	1,868	3,420	5,735
<b>Goddard</b>	225	225	255	255	248	274	533	955	1,427	1,804	2,037	4,344	5,084
<b>Rose Hill</b>	-	-	-	-	-	-	273	387	1,557	2,399	3,432	3,931	4,185
<b>Clearwater</b>	368	569	647	669	591	647	1,073	1,435	1,684	1,875	2,178	2,481	2,653
<b>Kechi</b>	-	-	-	-	-	-	245	229	288	517	1,038	1,909	2,217
<b>Cheney</b>	429	734	636	669	714	777	1,101	1,160	1,404	1,560	1,783	2,094	2,181
<b>Colwich</b>	225	258	262	260	284	339	703	879	935	1,091	1,229	1,327	1,455
<b>Garden Plain</b>	-	296	361	336	323	323	560	678	775	731	797	849	948
<b>Andale</b>	-	237	259	255	289	316	432	500	538	566	766	928	941
<b>Mount Hope</b>	327	519	513	466	442	473	539	665	791	805	830	813	806
<b>Eastborough</b>	-	-	-	-	312	708	1,001	1,141	854	896	826	773	756
<b>Bentley</b>	-	-	-	-	-	-	204	260	311	360	368	530	560
<b>Sedgwick**</b>	85	86	100	114	101	100	150	149	202	197	211	192	194
<b>Viola</b>	-	156	173	159	131	132	203	193	199	185	211	130	115
<b>Sedgwick County*</b>	16,826	16,076	14,890	19,778	22,998	47,252	61,213	43,035	48,259	48,345	47,447	37,214	36,474
<b>Butler County*</b>	1,316	2,184	2,755	4,073	4,281	6,641	9,795	8,210	6,592	5,613	3,399	2,666	2,344
<b>Sumner County*</b>	107	183	256	531	589	927	1,268	1,269	1,147	1,265	1,436	1,233	1,050
<b>WAMPO Region</b>	45,589	75,673	95,485	141,136	148,363	230,127	355,332	363,059	379,454	417,893	468,835	518,976	547,230

\*Unincorporated portion inside of 2021 WAMPO boundary

\*\*Portion of city inside of 2021 WAMPO Boundary

	Last Census year before incorporation
	El Paso City

### Populations of Entire Counties

Population	1900	1910	1920	1930	1940	1950	1960	1970	1980	1990	2000	2010	2020
<b>Sedgwick County</b>	44,037	73,095	92,234	136,330	143,311	222,290	343,231	350,694	366,531	403,662	452,869	498,365	523,824
<b>Butler County</b>	23,363	23,059	43,842	35,904	32,013	31,001	38,395	38,658	44,782	50,580	59,482	65,880	67,380
<b>Sumner County</b>	20,812	30,271	25,631	30,654	29,213	23,646	25,316	23,553	24,928	25,841	25,946	24,132	22,382

Source: 1900-2020 US Decennial Censuses





## WAMPO Transportation Acronym Glossary

Terms	Definition	Terms	Definition
<b>AADT</b>	Annual Average Daily Traffic	<b>MPA</b>	Metropolitan Planning Area
<b>AASHTO</b>	American Association of State Highway and Transportation Officials	<b>MPO</b>	Metropolitan Planning Organization
<b>ADA</b>	Americans with Disabilities Act	<b>MSA</b>	Metropolitan Statistical Area
<b>ALOP</b>	Annual List of Obligated Projects	<b>MTP</b>	Metropolitan Transportation Plan
<b>AMPO</b>	Association of Metropolitan Planning Organizations	<b>NAAQS</b>	National Ambient Air Quality Standards
<b>APA</b>	American Planning Association	<b>NEPA</b>	National Environmental Policy Act
<b>ASCE</b>	American Society of Civil Engineers	<b>NHS</b>	National Highway System
<b>ATC</b>	Active Transportation Committee	<b>NHTSA</b>	National Highway Traffic Safety Administration
<b>CMAQ</b>	Congestion Mitigation and Air Quality	<b>PE</b>	Preliminary Engineering
<b>CPG</b>	Consolidated Planning Grant	<b>PPP</b>	Public Participation Plan
<b>CPM</b>	Congestion Management Process	<b>PSC</b>	Project Selection Committee
<b>CRRSAA</b>	Coronavirus Response and Relief Supplemental Appropriations Act	<b>REAP</b>	Regional Economic Area Partnership
<b>CUFC</b>	Critical Urban Freight Corridor	<b>RFP</b>	Request for Proposals
<b>DBE</b>	Disadvantaged Business Enterprise	<b>ROW</b>	Right of Way
<b>DOT</b>	Department of Transportation	<b>RPSP</b>	Regional Pathways System Plan
<b>EIS</b>	Environmental Impact Statement	<b>SCAC</b>	Sedgwick County Association of Cities
<b>EJ</b>	Environmental Justice	<b>SOV</b>	Single Occupancy Vehicle
<b>EPA</b>	Environmental Protection Agency	<b>SRTS</b>	Safe Routes to School
<b>FC</b>	Functional Classification	<b>STBG</b>	Surface Transportation Block Grant
<b>FFY</b>	Federal Fiscal Year	<b>STIP</b>	State Transportation Improvement Program
<b>FHWA</b>	Federal Highway Administration	<b>STP</b>	Surface Transportation Program
<b>FTA</b>	Federal Transit Administration	<b>TA</b>	Transportation Alternatives
<b>GIS</b>	Geographic Information System	<b>TAB</b>	Transit Advisory Board
<b>HIP</b>	Highway Infrastructure Program	<b>TAC</b>	Technical Advisory Committee
<b>HOV</b>	High Occupancy Vehicle	<b>TAZ</b>	Traffic Analysis Zone
<b>HSIP</b>	Highway Safety Improvement Program	<b>TDM</b>	Travel Demand Model
<b>IKE</b>	Kansas Eisenhower Legacy Program	<b>TIP</b>	Transportation Improvement Program
<b>ITE</b>	Institute of Transportation Engineers	<b>TMA</b>	Transportation Management Area
<b>ITS</b>	Intelligent Transportation System	<b>TPB</b>	Transportation Policy Body
<b>KDOT</b>	Kansas Department of Transportation	<b>TRB</b>	Transportation Research Board
<b>LEP</b>	Limited English Proficiency	<b>UAB</b>	Urbanized Area Boundary
<b>LOS</b>	Level of Service	<b>UPWP</b>	Unified Planning Work Program
<b>L RTP</b>	Long Range Transportation Plan	<b>VMT</b>	Vehicle Miles Traveled
<b>MAPC</b>	Wichita-Sedgwick County Metropolitan Area Planning Commission	<b>WAMPO</b>	Wichita Area Metropolitan Planning Organization
<b>MAPD</b>	Wichita-Sedgwick County Metropolitan Area Planning Department	<b>WSCAAB</b>	Wichita-Sedgwick County Access Advisory Board

2022 TAC Representatives and Contact Information			
VOTING MEMBERS & ALTERNATES	REPRESENTATIVES	MEMBER EMAIL	ALTERNATE EMAIL
Coordinated Transit District #9 Representative	Annette Graham, alt. Dorsha Kirksey	annette.graham@sedgwick.gov	dorsha.kirksey@sedgwick.gov
Air Quality Representative	Nina Rasmussen	nrasmussen@wichita.gov	
Sedgwick County Association of Cities (SCAC)	Dan Squires	dansquires@derbyweb.com	
KDOT - Wichita Metro Office Representative	Don Snyder	donald.snyder@ks.gov	
Public Health Representative	Elizabeth Ablah	eablah@kumc.edu	
City of Wichita Representative	Gary Janzen	gjanzen@wichita.gov	
Regional Pathways Representative	Jack Brown	jbrown4@kumc.edu	
Sedgwick County Representative	Jim Weber	jim.weber@sedgwick.gov	
Economist Representative	Jolene Graham	jgraham@maizeks.gov	
Regional Economic Area Partnership (REAP)	Laura Rainwater, alt. Keith Lawing	lrainwater@workforce-ks.com	klawing@workforce-ks.com
Butler/Sumner Counties Representative	Les Mangus	lmangus@andoverks.com	
Urban Land Use Planning Representative	Mary Hunt, alt. Matt Williams	mmhunt@wichita.gov	mawilliams@wichita.gov
City of Wichita Representative	Mike Armour	marmour@wichita.gov	
Wichita Transit Representative	Raven Alexander, alt. Tonja Howard	ralexander@wichita.gov	thoward@wichita.gov
City of Valley Center Representative	Brent Clark	bclark@valleycenterks.org	
Kansas Department of Transportation (KDOT)	Kristi Wilson, alt. Cory Davis	kristi.d.wilson@ks.gov	cory.davis@ks.gov
City of Maize Representative	Vacant	Vacant	
City of Wichita Representative	Shawn Mellies	smellies@wichita.gov	
Transportation Policy Body (TPB) Representative	Burt Usery, <b>TAC Chair</b>	bussery@clearwaterks.org	
Kansas Department of Transportation (KDOT)	Tom Hein	tom.hein@ks.gov	
Sedgwick County Association of Cities (SCAC)	William Black	wblack@haysville-ks.com	
VACANT MEMBER POSITIONS			
Large Freight Representative	Vacant		
Rail Freight Representative	Vacant		
Technology Representative	Vacant		
NON-VOTING MEMBERS & ALTERNATES	REPRESENTATIVES	MEMBER EMAIL	ALTERNATE EMAIL
Kansas Department of Transportation (KDOT)	Matt Messina	Matthew.Messina@ks.gov	
Federal Highway Administration	Cecelie Cochran	cecelie.cochran@dot.gov	
Federal Transit Administration	Eva Steinman, alt. Daniel Ngyen	eva.steinman@dot.gov	daniel.nguyen@dot.gov
Kansas Turnpike Administration	Glen Scott, alt. David Jacobson	gscott@ksturnpike.com	djacobson@ksturnpike.com
City of Wichita	Tia Raamot	traamot@wichita.gov	
WAMPO Representative	Chad Parasa	chad.parasa@wampo.org	
WAMPO Representative	Ashley Bryers	Ashley.Bryers@wampo.org	
WAMPO Representative	Nicholas Flanders	Nicholas.Flanders@wampo.org	
WAMPO Representative	Mark Kruep	Mark.Kruep@wampo.org	

Rev. 02/23/2022

## 2022 WAMPO Meeting Schedules



Meeting Location: 271 W. 3<sup>rd</sup> Street, Suite 203, Wichita, KS 67202 (Or Online)

Transportation Policy Body	Technical Advisory Committee
<i>3:00 pm (unless otherwise stated)</i>	<i>10:00 am (unless otherwise stated)</i>
No January Meeting	January 24, 2022
February 8, 2022	February 28, 2022
March 8, 2022	March 28, 2022
April 12, 2022	April 25, 2022
May 10, 2022	May 23, 2022
June 14, 2022	June 27, 2022
July 12, 2022	July 25, 2022
August 9, 2022	August 22, 2022
September 13, 2022	September 26, 2022
October 11, 2022	October 24, 2022
November 8, 2022	November 28, 2022
December 13, 2022	No December Meeting