



Technical Advisory Committee (TAC) meeting notice

Monday, January 24, 2022 at 10:00 am:

Location =	271 W. 3rd Street, Ste. 203 (2nd Floor), Wichita, Kansas 67202
Or Online =	https://global.gotomeeting.com/join/484802957

Please call us at 316.779.1313 at least 48 hours in advance if you require special accommodations to participate in this meeting. We make every effort to meet reasonable requests.

Meeting Agenda

[Note: Meeting agenda is subject to change during the meeting.]

	Page Numbers (in this packet)
1. Welcome	
2. Regular Business	Page 1
A. Approval of January 24, 2022 Agenda	
B. Approval of November 22, 2021 Minutes	Pages 2 to 4
C. Director's Report	
i. Overview	
ii. New Staff Introductions	
iii. TIP Amendment Updates	
3. Public Comments	Page 5
4. New Business	
A. Update: Active Transportation Facilities in the Region Alan Kailer, BikeWalk Wichita, Active Transportation Committee Co-Chair	Page 6
B. Update: Travel Demand Model and Its Applications Chad Parasa and Nick Flanders, WAMPO	Pages 7 to 10
C. Discussion: Safety Plan Development Elizabeth Ablah, KU School of Medicine, Safety & Health Committee Chair Chad Parasa and Ashley Bryers, WAMPO	
5. Committee Reports/Updates	
A. Safety & Health Committee, Dr. Elizabeth Ablah	
B. Active Transportation Committee, Alan Kailer & Jack Brown	
6. Other Business	
7. Adjournment	
WAMPO Region Population Table and Map	Pages 11 to 12
WAMPO Acronym Glossary	Page 13
WAMPO TAC Roster	Page 14
WAMPO 2022 TAC Meetings	Page 15

Chad Parasa, TAC Secretary
January 18, 2022

WAMPO fully complies with Title VI of the Civil Rights Act of 1964 and related statutes and regulations in all programs and activities. For more information, or to obtain a Title VI Discrimination Complaint Form visit www.wampo.org or call (316) 779-1313. Requests for special accommodation and/or language interpretation should be made to Theresa House at Theresa.House@wampo.org or call (316) 779-1313.

Meeting Summary

Technical Advisory Committee (TAC) Meeting Summary

Monday, November 22nd, 2021 @ 10:00 AM
Hybrid Meeting

Meeting Duration: 57 minutes

Members in Attendance:

Troy Tabor, TAC Chair
Elizabeth Ablah, Public Health Representative
Raven Alexander, Wichita Transit
Mike Armour, Wichita
Jack Brown, Regional Pathways Representative
Brent Clark, Valley Center

Annette Graham, Coordinated Transit District #9 Representative
Jolene Graham, Economist Representative
Tom Hein, KDOT
Gary Janzen, Wichita
Les Mangus, Butler/Sumner Co.
Nina Rasmussen, Air Quality Representative

Laura Rainwater, REAP
Don Snyder, KDOT
Jim Weber, Sedgwick Co.
Matt Williams, Urban Land Use Planning Representative
Kristi Wilson, KDOT

Alt:

Tonja Howard, Wichita Transit

Other Attendees:

Greg Allison, MKEC
Kathryn Chambers, WAMPO
Cecelie Cochran, FHWA
Ron Colbert, Valley Center
Nick Flanders, WAMPO
Alan Kailer, Bike Walk Wichita

Brett Letkowski, TranSystems
Matt Messina, KDOT
ThaiBinh Ninh, MAPD
Chad Parasa, WAMPO
Tia Raamot, Wichita Transit
Brad Shores, JEO

Jordan Silvers, WAMPO
Eva Steinman, FTA
Patty Sykes, WAMPO
Jessica Warren, Sedgwick Co.
Kristen Zimmerman, PEC

1. Mr. Tabor called the meeting to order at 10:00 AM.

2. Regular Business

A. Approval of November 22nd, 2021 Agenda

Discussion: None

Action: Moved to approve agenda as presented. Motion passed (14-0).

Motion: J. Weber

Second: G. Janzen

B. Approval of October 25th, 2021 Minutes

Discussion: None

Action: Moved to approve minutes. Motion passed (14-0).

Motion: M. Armour

Second: G. Janzen

3. Public Comment Opportunity – None

4. New Business

A. Action: REIMAGINED MOVE 2040 Amendment #1

REIMAGINED MOVE 2040, WAMPO's long-range transportation plan, includes procedures for amending the plan in order to address changes in the situation after the plan is adopted. The proposed Amendment includes the following projects: "K-96 - Hillside to Greenwich: Upgrade from 4-Lane to 6-Lane," "K42: from the Sumner/SG Co Line to south of W 71st St at Clonmel: Rehabilitate and add shoulders," and a general category of "Bicycle/Pedestrian Projects." In addition, there are administrative adjustments to several phases of the North Junction Project. The amendment has completed its public comment and review period and is fiscally constrained.

Action: Moved to recommend the amendment for TPB approval as proposed. Motion passed (16-0).¹

¹ By the time the votes on New Business occurred, two more TAC members had joined the online meeting.

Motion: J Weber

Second: G. Janzen

B. **Action: 2021-2024 TIP (Transportation Improvement Program) Amendment #5**

Amendment #5 is a regularly scheduled amendment to WAMPO's current 2021-2024 TIP. Amendment #5 is composed of four projects that require formal action and three that are administrative adjustments. The amendment has completed its public comment and review period, is consistent with the MTP, and is fiscally constrained. The projects included are as follows:

Type of Change	Project Name
Significant modification	I-235, I-135, K-254 & K-96 Interchange-Gold Project-Wichita (2019, 2020, 2021, 2022) (KDOT)
Remove project	Ford St Economic Development in Valley Center/Park City (2022) (KDOT)
New project	K-96 in Sedgwick County: Upgrade from 4-Lane to 6-Lane (2022, 2023, 2024, 2027) (KDOT)
New project	I-135 in Sedgwick County (2018, 2019) (KDOT)
Administrative adjustment	Bridge over Chisholm Creek on 61st Street North (2017, 2018, 2019) (City of Park City)
Administrative adjustment	61st Street North, Broadway to the Wichita Valley Center Floodway Bridge (2020, 2021) (City of Park City)
Administrative adjustment	Sedgwick County Transportation Comprehensive Operations and Technology Feasibility Study and Implementation (2021) (Sedgwick County Department of Aging)

Action: Moved to recommend the amendment for TPB approval as proposed. Motion passed (16-0).

Motion: J. Weber

Second: M. Armour

C. **Action: 2021-2024 TIP (Transportation Improvement Program) Special Amendment #5.5**

Amendment #5.5 is a "Special Amendment" that is being processed in addition to the regularly scheduled Amendments. Amendment #5.5 is composed of seven projects that require formal action. The amendment is consistent with the MTP and is fiscally constrained. The public comment and review period for this amendment is open through December 13th, 2021. The projects included are as follows:

Type of Change	Project Name
Significant modification	Zoo Boulevard Bridge over M.S. Mitch Mitchell Floodway (2021, 2023, 2024) (Sedgwick County)
Significant Modification	Nelson Drive Realignment (2023, 2024) (City of Derby)
Significant Modification	Academy Avenue Improvements from Maize Road to Maize City Park (2022) (City of Maize)
Modification	Oliver and Kechi Rd. Intersection (2021, 2023, 2024) (City of Kechi)
Significant Modification	West St., Harry to Pawnee (2018, 2021, 2022, 2023, 2024, 2025) (City of Wichita)
Significant Modification	Meridian, from Ford (77th St. N.) to Seward (69th St. N.) and Main to 5th (85th St. N.) (2022, 2023) (City of Valley Center)
Significant Modification	WAMPO Travel Demand Model Update (2022) (WAMPO)

Action: Moved to recommend the amendment for TPB approval as proposed. Motion passed (16-0).

Motion: J. Weber

Second: G. Janzen

D. **Update: Roadway Functional Classifications**

Jordan Silvers presented on functional classification, which is the system used to organize streets and highways according to how they move vehicles across the transportation network. This designation is based on criteria established by the Federal Highway Administration, such as roadway volume and speed limit. Functional classification is used in transportation planning and roadway design and is a factor in determining if a roadway project is eligible to receive federal funds. As the Metropolitan Planning Organization for the Wichita Metropolitan Area, WAMPO develops and maintains the functional

classification system of roadways within its planning boundaries in coordination with local cities, counties, and KDOT. WAMPO staff will check with cities/jurisdictions on whether any roads within their boundaries require a functional classification update.

5. Committee & Partnership/Updates

A. Safety & Health Committee, Dr. Elizabeth Ablah

Per the November 3rd Safety & Health Committee meeting, the Committee and WAMPO staff plan to work together to develop a plan to improve safety and health in the region via data-driven recommendations into the next year 2022. The next Safety & Health Committee meeting will be held on February 2nd, 2022 at 9:30 AM.

B. Active Transportation Committee, Alan Kailer & Jack Brown

The next Active Transportation Committee meeting will be held on December 1st, 2021 at 9:30 AM, where the City of Goddard and Sedgwick County will present on their active transportation plans.

6. Other Business – None

7. Meeting adjourned at 10:57 AM.

The next regular meeting will be held on Monday, January 24th, 2022 at 10:00 AM.



Agenda Item 3:
Public Comment Opportunity
Troy Tabor, Technical Advisory Committee (TAC) Chair

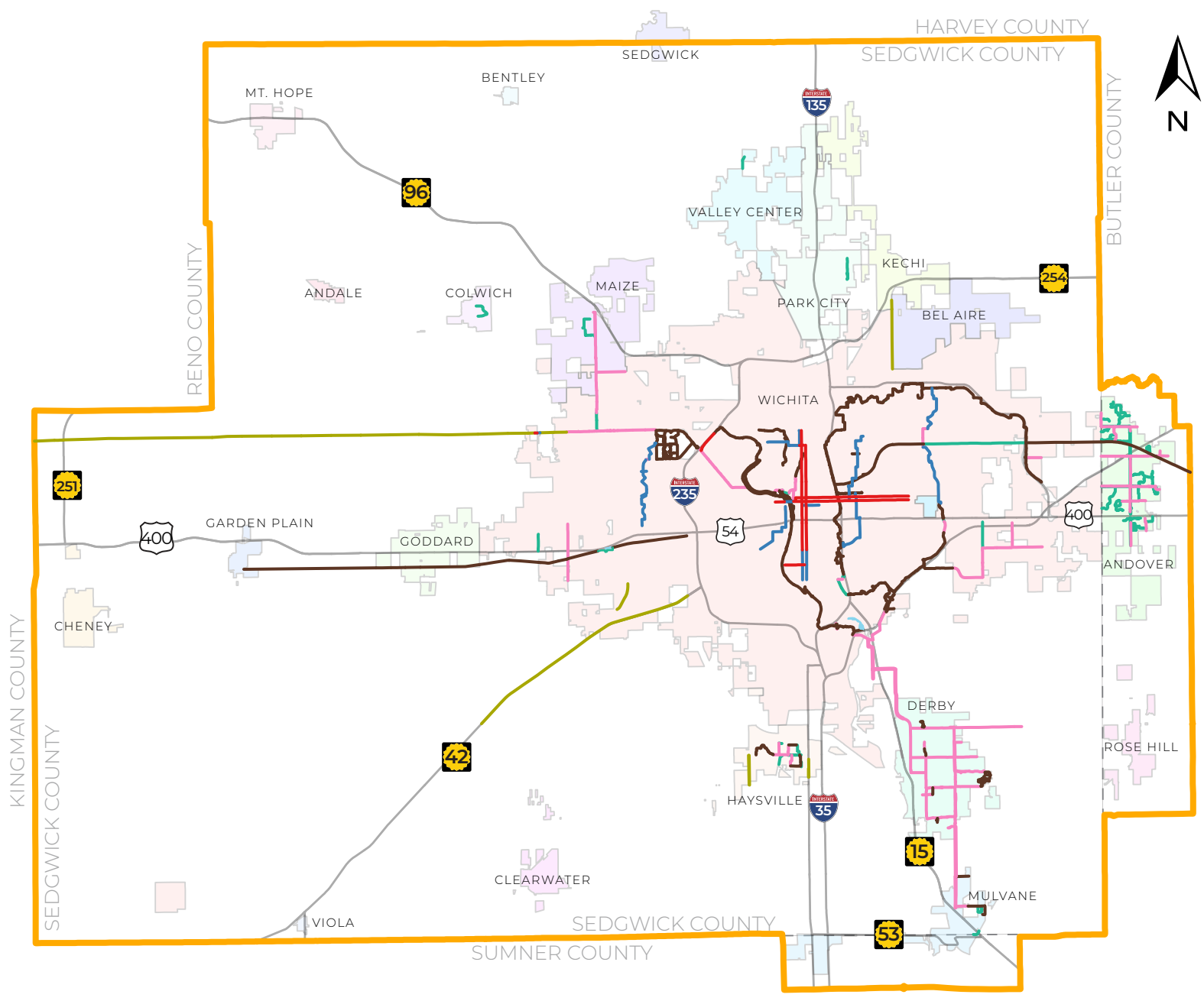
Background

The Public Comment Opportunity is an open forum for the general public to provide comments about specific items on this month's agenda, as well as any other issues directly pertaining to WAMPO's policies, programs, or documents.

- Comments are limited to two (2) minutes per individual.



BIKE/PED TRAILS AND FACILITIES



LEGEND

- Shared Use Path
- Bicycle Lane
- Paved Shoulder
- Other
- Sidepath
- Marked / Signed Share Lane
- Mountain Bicycle
- County Boundaries



Background:

The WAMPO Regional Travel Model is the Travel Demand Model (TDM) for the Wichita metropolitan area. Currently, it has a base year of 2017 and a horizon year of 2040; during 2022-2023, updates will be made to the model, including calibration, validation, updating the base year, and advancing the horizon year to 2050. The TDM predicts traffic volumes on individual roadway segments and in the overall region under given conditions of transportation demand (e.g., population and employment in each of the Traffic Analysis Zones (TAZs) into which the model divides the region) and transportation supply (e.g., planned improvements to the roadway network or public transit system). This makes the TDM a valuable resource for planners in the WAMPO region: It can be used to judge how much capacity a jurisdiction needs to add to its transportation system, it can be used to justify specific proposed improvements, it can be used to gauge the severity of anticipated disruptions, and it can be used to estimate the congestion impacts of proposed land use changes.

The WAMPO Metropolitan Transportation Plan (MTP) reports summary model outputs for the overall region in the base year and horizon year. If member jurisdictions undertake studies or other planning activities that require more specific or tailored TDM outputs, they are welcome to request them of WAMPO staff.

More information is available in the [Travel Demand Model Appendix](#) to the WAMPO MTP, *REIMAGINED MOVE 2040*.

Next Steps:

WAMPO staff invite jurisdictions/project sponsors to make requests for traffic-volume growth rates or other TDM outputs to support their planning efforts:

- State the purpose of the data request. For example:
 - Select Link Analysis (e.g., simulating a bridge closure)
 - Studying travel patterns (e.g., where do users of a facility come from?)
 - Testing alternatives
- State the exact scenarios for which outputs are being requested. For example:
 - base year network (2017 in current model)
 - Existing+Committed network in the horizon year (2040 in the current model)
 - A custom scenario wherein specific projects or facilities are included/excluded or different assumptions are made about population and employment growth
- State the exact geographic area or specific roadway segments for which traffic volumes are desired (some roadway segments are not represented individually in the model, such as those that mostly just carry traffic in and out of one neighborhood).

Attachment(s):

- [Example: Modeled Traffic Volumes on West St. between I-235 and MacArthur Rd.](#)
- [Example: Modeled Traffic Volumes on K-96 between Hillside St. and Greenwich Rd.](#)



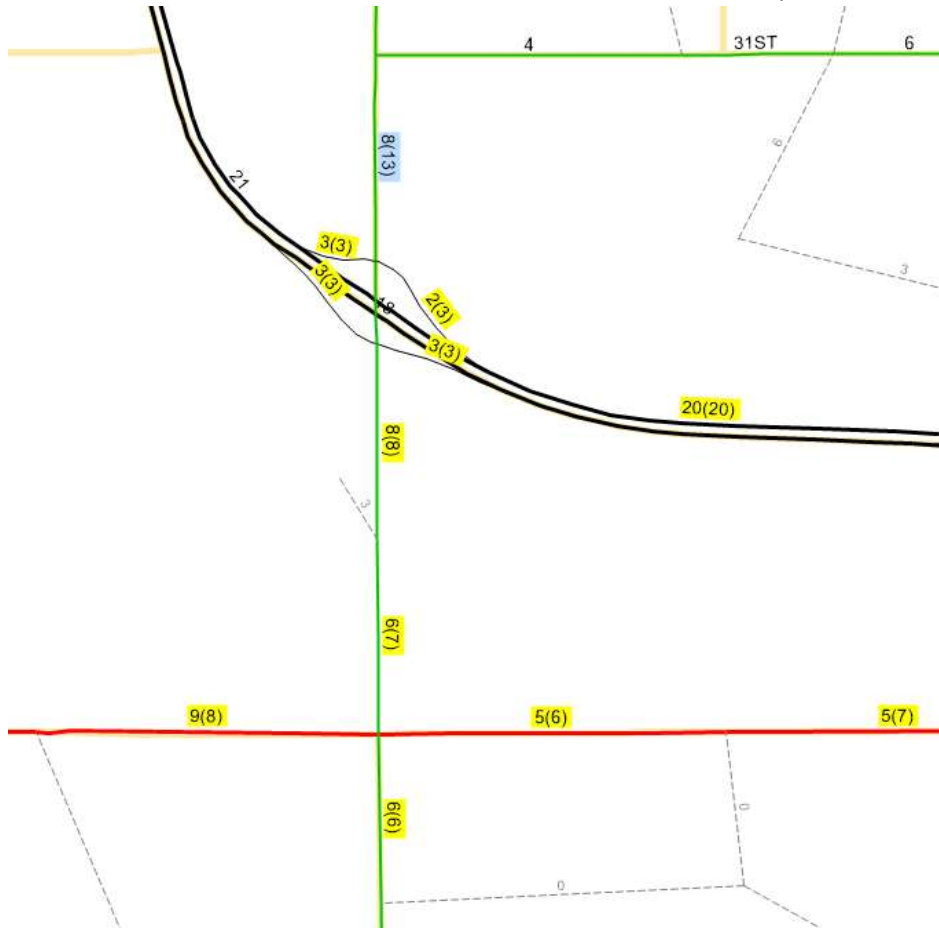
	Link	Dir	2017	2040EC
West Street				
North of westbound I-235 on/off ramps	1459	0	7,674	14,352
Between westbound I-235 on/off ramps and eastbound I-235 on/off ramps	1428	0	7,219	17,431
South of eastbound I-235 on/off ramps	7085	0	7,867	21,143
North of MacArthur Road	30940	0	6,081	14,911
South of MacArthur Road	9715	0	6,305	12,933
MacArthur Road				
West of West Street	23168	0	9,477	13,649
East of West Street	7081	0	4,784	7,370
West St & I-235 interchange ramps				
Westbound on ramp	5489	1	2,843	6,145
Westbound off ramp	5491	1	1,830	4,090
Eastbound on ramp	5490	1	2,532	5,755
Eastbound off ramp	5492	1	3,022	4,828

Notes:

2017 data are from the 2017 base year model. 2040EC data are from the 2040 Existing+Committed model run.

All volumes are raw model volumes. Results should be checked against count data and post-processed if necessary. Model Version V8 - 3.2

Localized Validation - labels show 2017 Model (Exist. Count) in thousands of daily vehicles.



Overall, the 2017 base-year model run's results are close to the observed counts in the area, except for an underrepresentation of traffic volumes on West St. north of the I-235 interchange. Please make sure to check and post process to account for this if necessary.



	Link	Dir	2017	2040EC	2040EC+K96 Exp.
K-96 eastbound					
Between Hillside & Oliver	7480	-1	28531	39478	40407
Between Oliver & Woodlawn	5644	1	29530	38939	40445
Between Woodlawn & Rock	7466	-1	22960	32501	33703
Between Rock & Webb	7457	1	17592	27750	28533
Between Webb & Greenwich	7154	-1	19390	29499	30112
K-96 westbound					
Between Hillside & Oliver	7477	1	27404	37201	38346
Between Oliver & Woodlawn	5643	-1	29105	38144	40181
Between Woodlawn & Rock	7464	1	23565	32671	34087
Between Rock & Webb	7456	1	17759	27801	28972
Between Webb & Greenwich	7453	1	19530	29461	30384
Hillside St & K-96 interchange ramps					
Westbound on ramp	5606	-1	1981	3223	3155
Westbound off ramp	5610	-1	3706	6462	6753
Eastbound on ramp	5611	1	4017	6619	6820
Eastbound off ramp	5608	1	2321	3513	3410
Hillside St					
North of north ramp termini	27286	0	9609	20647	20781
Between north and south ramp termini	27295	0	9799	18851	18981
South of south ramp termini	2117	0	9471	16779	16871
Oliver St & K-96 interchange ramps					
Westbound on ramp	5614	-1	2528	3815	3702
Westbound off ramp	5616	-1	4228	4758	5536
Eastbound on ramp	5617	1	3952	4296	4712
Eastbound off ramp	5613	1	2953	4835	4674
Oliver St					
North of north ramp termini	3769	0	11592	16745	16819
Between north and south ramp termini NB	3092	1	5039	7386	7265
Between north and south ramp termini SB	3091	-1	6786	7979	8749
South of south ramp termini	3088	0	12365	14860	15652
Woodlawn Blvd & K-96 interchange ramps					
Westbound on ramp	5636	-1	8545	9107	9777
Westbound off ramp	5619	-1	3006	3634	3683
Eastbound on ramp	5620	1	2323	3563	3608
Eastbound off ramp	5622	1	8894	10000	10351
Woodlawn Blvd					
North of north ramp termini	27306	0	23124	34467	34708
Between north and south ramp termini NB	2699	1	12114	17853	17961
Between north and south ramp termini SB	2698	-1	6303	12329	11855
South of south ramp termini	29210	0	14879	25652	25208
Rock Rd & K-96 interchange ramps					
Westbound on ramp	5624	-1	10396	11239	11548
Westbound off ramp	5627	-1	4589	6368	6433
Eastbound on ramp	5628	1	4666	6222	6267
Eastbound off ramp	5626	1	10035	10974	11437
Rock Rd					
North of north ramp termini	32303	0	31017	38742	39043
Between north and south ramp termini NB	2705	1	17850	20912	21121
Between north and south ramp termini SB	2704	-1	12613	15997	15922
South of south ramp termini	32179	0	29538	35420	35363
Webb Rd & K-96 interchange ramps					
Westbound on ramp	5630	-1	3365	5340	5572
Westbound off ramp	5629	1	5136	7000	6984
Eastbound on ramp	5631	1	5718	7664	7676
Eastbound off ramp	5632	1	3919	5915	6097



	Link	Dir	2017	2040EC	2040EC+K96 Exp.		
Webb Rd							
North of north ramp termini			22167	0	8078	14727	14876
Between north and south ramp termini NO 29th			2084	0	12667	20445	20364
Between north and south ramp termini SO 29th			27401	0	15544	22732	22733
South of south ramp termini			3718	0	13922	20870	21017
Greenwich Rd & K-96 interchange							
Westbound on ramp			7159	1	5290	8832	9134
Westbound off ramp			32418	1	720	1413	1392
Eastbound on ramp			32415	1	156	1072	1054
Eastbound off ramp			7158	-1	5978	9537	9672
Greenwich Rd							
North of north ramp termini			27399	0	12743	32565	32752
Between north and south ramp termini			27403	0	12408	28452	28449
South of south ramp termini			3835	0	13910	25807	25879

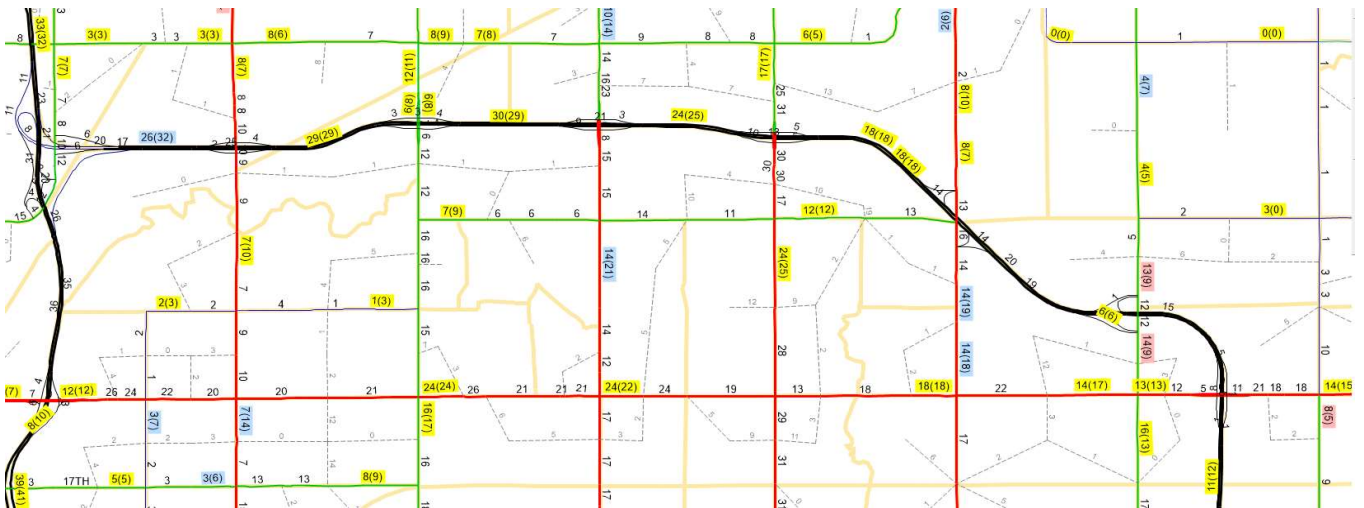
Notes:

2017 data is from the 2017 base year model. 2040EC data is from the 2040 EC model run. 2040EC+K96 Exp. Is the 2040EC run plus expanded K-96 to 3-lane

All volumes are raw model volumes. Results should be checked against count data and post-processed if necessary.

Model Version V8 - 3.0

Localized Validation - labels show 2017 Model (Exist. Count) in thousand daily vehicles.





WAMPO-REGION POPULATION TRENDS, 1900-2020

Population	1900	1910	1920	1930	1940	1950	1960	1970	1980	1990	2000	2010	2020
Wichita	24,671	52,450	72,217	111,110	114,966	168,279	254,698	276,554	279,272	304,011	344,284	382,368	397,532
Derby	-	235	247	294	256	432	6,458	7,947	9,786	14,699	17,807	22,158	25,625
Andover	-	-	-	-	-	-	186	1,880	2,801	4,047	6,698	11,791	14,892
Haysville	-	-	-	-	-	-	5,836	6,483	8,006	8,364	8,502	10,826	11,262
Park City	-	-	-	-	-	-	2,687	2,529	3,778	5,050	5,814	7,297	8,333
Bel Aire	-	-	-	-	-	-	-	-	-	3,695	5,836	6,769	8,262
Valley Center	343	381	486	896	700	854	2,570	2,551	3,300	3,624	4,883	6,822	7,340
Mulvane	667	1,084	1,239	1,042	940	1,387	2,981	3,185	4,254	4,674	5,155	6,111	6,286
Maize	-	-	189	229	198	266	623	785	1,294	1,520	1,868	3,420	5,735
Goddard	225	225	255	255	248	274	533	955	1,427	1,804	2,037	4,344	5,084
Rose Hill	-	-	-	-	-	-	273	387	1,557	2,399	3,432	3,931	4,185
Clearwater	368	569	647	669	591	647	1,073	1,435	1,684	1,875	2,178	2,481	2,653
Kechi	-	-	-	-	-	-	245	229	288	517	1,038	1,909	2,217
Cheney	429	734	636	669	714	777	1,101	1,160	1,404	1,560	1,783	2,094	2,181
Colwich	225	258	262	260	284	339	703	879	935	1,091	1,229	1,327	1,455
Garden Plain	-	296	361	336	323	323	560	678	775	731	797	849	948
Andale	-	237	259	255	289	316	432	500	538	566	766	928	941
Mount Hope	327	519	513	466	442	473	539	665	791	805	830	813	806
Eastborough	-	-	-	-	312	708	1,001	1,141	854	896	826	773	756
Bentley	-	-	-	-	-	-	204	260	311	360	368	530	560
Sedgwick**	85	86	100	114	101	100	150	149	202	197	211	192	194
Viola	-	156	173	159	131	132	203	193	199	185	211	130	115
Sedgwick County*	16,826	16,076	14,890	19,778	22,998	47,252	61,213	43,035	48,259	48,345	47,447	37,214	36,474
Butler County*	1,316	2,184	2,755	4,073	4,281	6,641	9,795	8,210	6,592	5,613	3,399	2,666	2,344
Sumner County*	107	183	256	531	589	927	1,268	1,269	1,147	1,265	1,436	1,233	1,050
WAMPO Region	45,589	75,673	95,485	141,136	148,363	230,127	355,332	363,059	379,454	417,893	468,835	518,976	547,230

*Unincorporated portion inside of 2021 WAMPO boundary

**Portion of city inside of 2021 WAMPO Boundary

	Last Census year before incorporation
	El Paso City

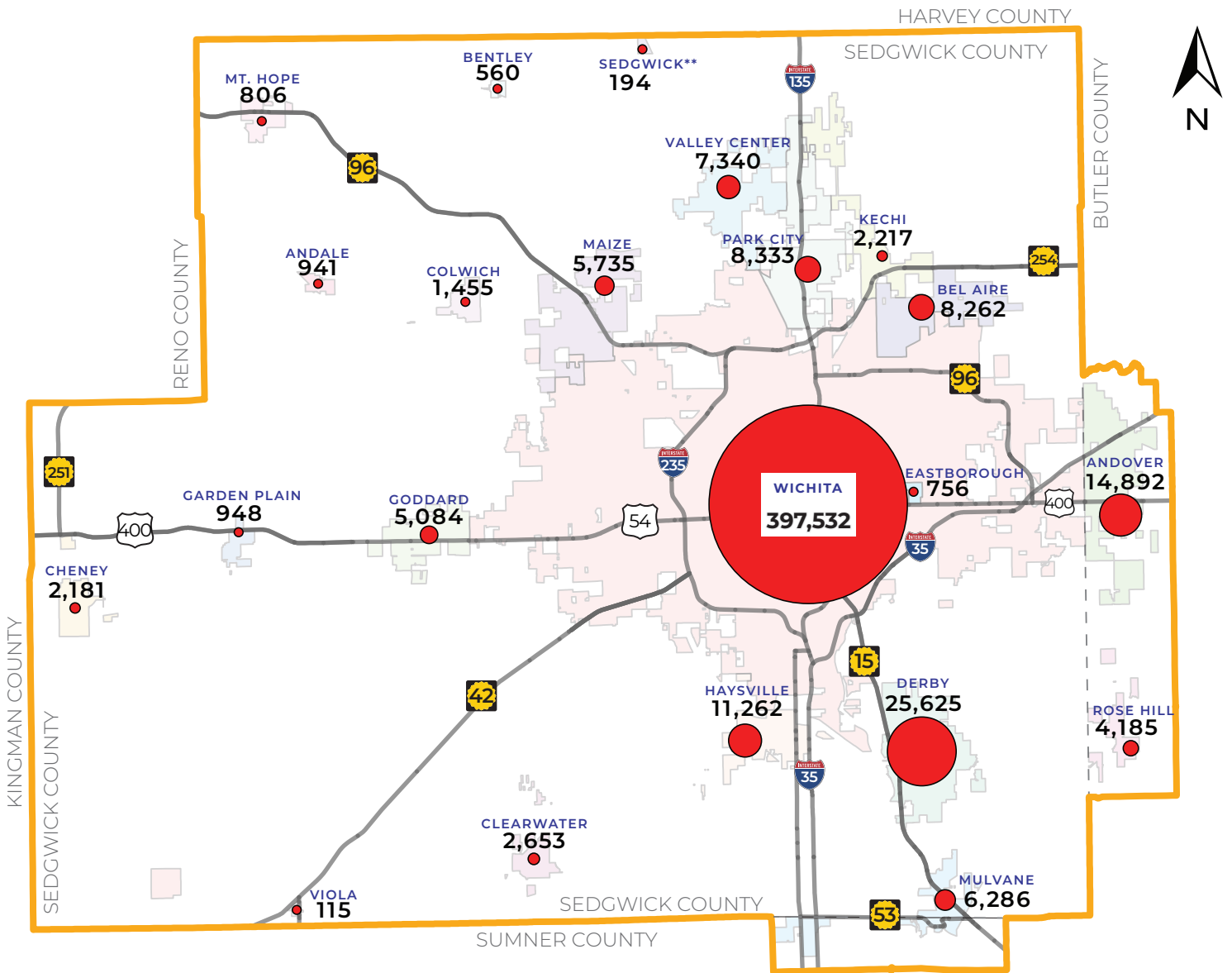
Populations of Entire Counties

Population	1900	1910	1920	1930	1940	1950	1960	1970	1980	1990	2000	2010	2020
Sedgwick County	44,037	73,095	92,234	136,330	143,311	222,290	343,231	350,694	366,531	403,662	452,869	498,365	523,824
Butler County	23,363	23,059	43,842	35,904	32,013	31,001	38,395	38,658	44,782	50,580	59,482	65,880	67,380
Sumner County	20,812	30,271	25,631	30,654	29,213	23,646	25,316	23,553	24,928	25,841	25,946	24,132	22,382

Source: 1900-2020 US Decennial Censuses



WAMPO REGION 2020 POPULATION



WAMPO Region Total Population: 547,230

Unincorporated Population: 39,868

**Portion of population within WAMPO boundary



WAMPO Transportation Acronym Glossary

Terms	Definition	Terms	Definition
AADT	Annual Average Daily Traffic	MPA	Metropolitan Planning Area
AASHTO	American Association of State Highway and Transportation Officials	MPO	Metropolitan Planning Organization
ADA	Americans with Disabilities Act	MSA	Metropolitan Statistical Area
ALOP	Annual List of Obligated Projects	MTP	Metropolitan Transportation Plan
AMPO	Association of Metropolitan Planning Organizations	NAAQS	National Ambient Air Quality Standards
APA	American Planning Association	NEPA	National Environmental Policy Act
ASCE	American Society of Civil Engineers	NHS	National Highway System
ATC	Active Transportation Committee	NHTSA	National Highway Traffic Safety Administration
CMAQ	Congestion Mitigation and Air Quality	PE	Preliminary Engineering
CPG	Consolidated Planning Grant	PPP	Public Participation Plan
CPM	Congestion Management Process	PSC	Project Selection Committee
CRRSAA	Coronavirus Response and Relief Supplemental Appropriations Act	REAP	Regional Economic Area Partnership
CUFC	Critical Urban Freight Corridor	RFP	Request for Proposals
DBE	Disadvantaged Business Enterprise	ROW	Right of Way
DOT	Department of Transportation	RPSP	Regional Pathways System Plan
EIS	Environmental Impact Statement	SCAC	Sedgwick County Association of Cities
EJ	Environmental Justice	SOV	Single Occupancy Vehicle
EPA	Environmental Protection Agency	SRTS	Safe Routes to School
FC	Functional Classification	STBG	Surface Transportation Block Grant
FFY	Federal Fiscal Year	STIP	State Transportation Improvement Program
FHWA	Federal Highway Administration	STP	Surface Transportation Program
FTA	Federal Transit Administration	TA	Transportation Alternatives
GIS	Geographic Information System	TAB	Transit Advisory Board
HIP	Highway Infrastructure Program	TAC	Technical Advisory Committee
HOV	High Occupancy Vehicle	TAZ	Traffic Analysis Zone
HSIP	Highway Safety Improvement Program	TDM	Travel Demand Model
IKE	Kansas Eisenhower Legacy Program	TIP	Transportation Improvement Program
ITE	Institute of Transportation Engineers	TMA	Transportation Management Area
ITS	Intelligent Transportation System	TPB	Transportation Policy Body
KDOT	Kansas Department of Transportation	TRB	Transportation Research Board
LEP	Limited English Proficiency	UAB	Urbanized Area Boundary
LOS	Level of Service	UPWP	Unified Planning Work Program
L RTP	Long Range Transportation Plan	VMT	Vehicle Miles Traveled
MAPC	Wichita-Sedgwick County Metropolitan Area Planning Commission	WAMPO	Wichita Area Metropolitan Planning Organization
MAPD	Wichita-Sedgwick County Metropolitan Area Planning Department	WSCAAB	Wichita-Sedgwick County Access Advisory Board

2021 TAC Representatives and Contact Information

VOTING MEMBERS & ALTERNATES	REPRESENTATIVES	MEMBER EMAIL	ALTERNATE EMAIL
Coordinated Transit District #9 Representative	Annette Graham, alt. Dorsha Kirksey	annette.graham@sedgwick.gov	dorsha.kirksey@sedgwick.gov
Air Quality Representative	Nina Rasmussen	nrasmussen@wichita.gov	
Sedgwick County Association of Cities (SCAC)	Dan Squires	dansquires@derbyweb.com	
KDOT - Wichita Metro Office Representative	Don Snyder	donald.snyder@ks.gov	
Public Health Representative	Elizabeth Ablah	eablah@kumc.edu	
City of Wichita Representative	Gary Janzen	gjanzen@wichita.gov	
Regional Pathways Representative	Jack Brown	jbrown4@kumc.edu	
Sedgwick County Representative	Jim Weber	jim.weber@sedgwick.gov	
Economist Representative	Jolene Graham	jgraham@cityofmaize.org	
Regional Economic Area Partnership (REAP)	Laura Rainwater, alt. Keith Lawing	lrainwater@workforce-ks.com	klawing@workforce-ks.com
Butler/Sumner Counties Representative	Les Mangus	lmangus@andoverks.com	
Urban Land Use Planning Representative	Mary Hunt, alt. Matt Williams	mmhunt@wichita.gov	mawilliams@wichita.gov
City of Wichita Representative	Mike Armour	marmour@wichita.gov	
Wichita Transit Representative	Raven Alexander, alt. Tonja Howard	ralexander@wichita.gov	thoward@wichita.gov
City of Valley Center Representative	Brent Clark	bclark@valleycenterks.org	
Kansas Department of Transportation (KDOT)	Kristi Wilson, alt. Cory Davis	kristi.d.wilson@ks.gov	cory.davis@ks.gov
City of Maize Representative	Pat Stivers	pstivers@cityofmaize.org	
City of Wichita Representative	Shawn Mellies	smellies@wichita.gov	
Transportation Policy Body (TPB) Representative	Troy Tabor TAC Chair	ttabor@andoverks.com	
Kansas Department of Transportation (KDOT)	Tom Hein	tom.hein@ks.gov	
Sedgwick County Association of Cities (SCAC)	William Black	wblack@haysville-ks.com	
VACANT MEMBER POSITIONS			
Large Freight Representative	Vacant		
Rail Freight Representative	Vacant		
Technology Representative	Vacant		
NON-VOTING MEMBERS & ALTERNATES	REPRESENTATIVES	MEMBER EMAIL	ALTERNATE EMAIL
WAMPO Representative	Chad Parasa	chad.parasa@wampo.org	
Federal Highway Administration	Cecelie Cochran	cecelie.cochran@dot.gov	
Federal Transit Administration	Eva Steinman, alt. Daniel Ngyen	eva.steinman@dot.gov	daniel.nguyen@dot.gov
Kansas Turnpike Administration	Glen Scott, alt. David Jacobson	gscott@ksturnpike.com	djacobson@ksturnpike.com

Updated 9/9/21

2022 WAMPO Meeting Schedules



Meeting Location: 271 W. 3rd Street, Suite 203, Wichita, KS 67202 (Or Online)

Transportation Policy Body	Technical Advisory Committee
<i>3:00 pm (unless otherwise stated)</i>	<i>10:00 am (unless otherwise stated)</i>
No January Meeting	January 24, 2022
February 8, 2022	February 28, 2022
March 8, 2022	March 28, 2022
April 12, 2022	April 25, 2022
May 10, 2022	May 23, 2022
June 14, 2022	June 27, 2022
July 12, 2022	July 25, 2022
August 9, 2022	August 22, 2022
September 13, 2022	September 26, 2022
October 11, 2022	October 24, 2022
November 8, 2022	November 28, 2022
December 13, 2022	No December Meeting