



Wichita Demographic and Socioeconomic Report

April 2023

In Partnership With:

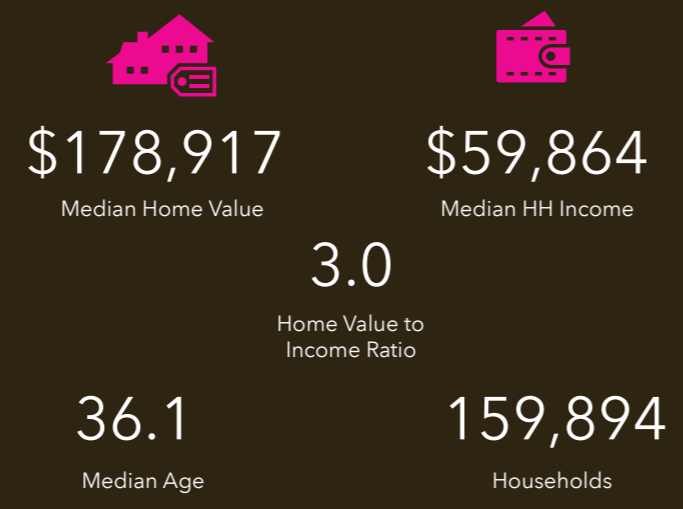




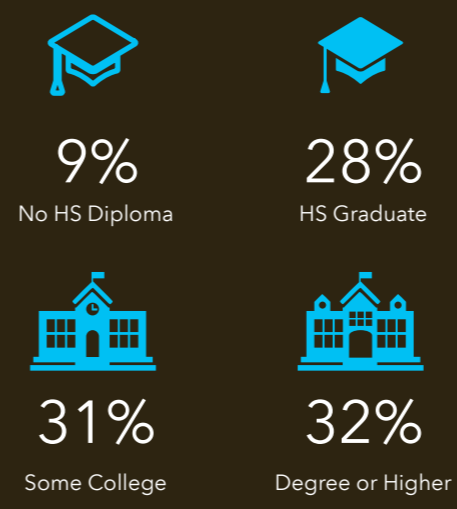
TAPESTRY SEGMENTATION

The Fabric of America's Neighborhoods

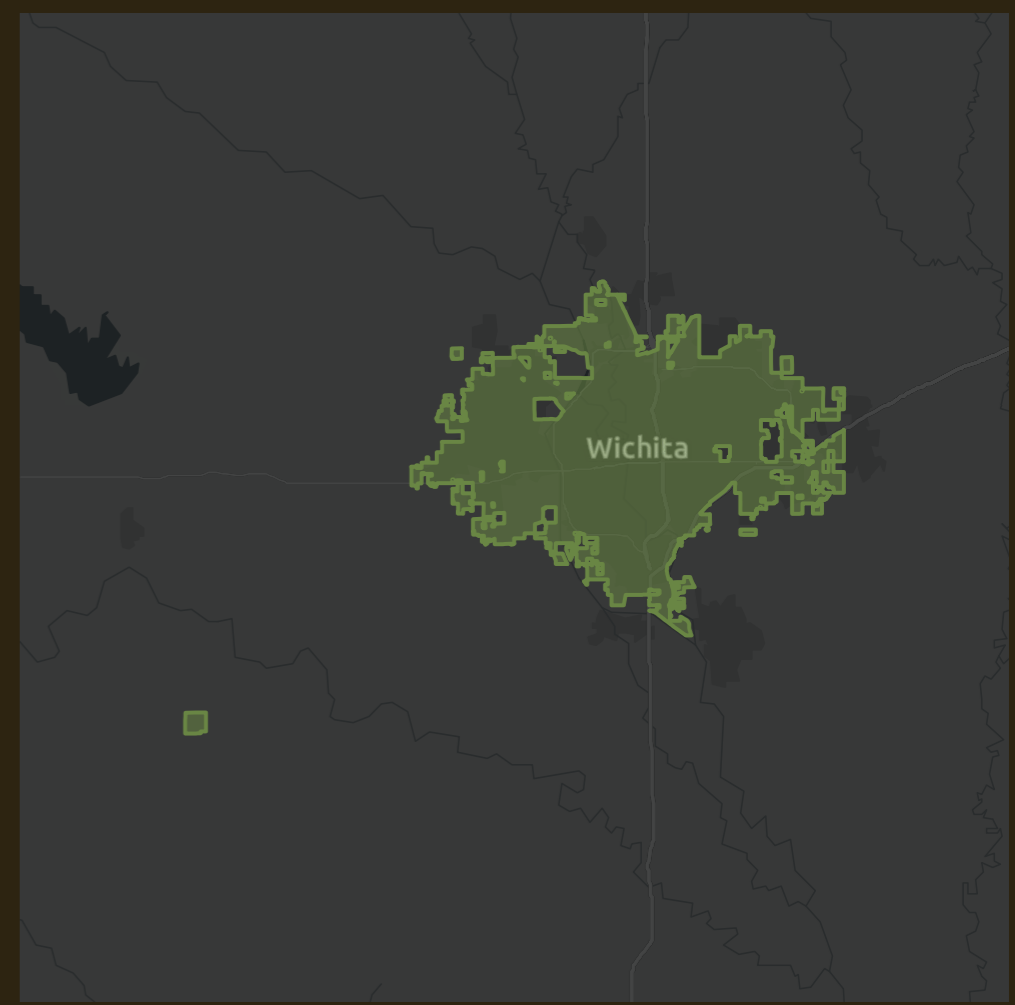
Key Facts



Education

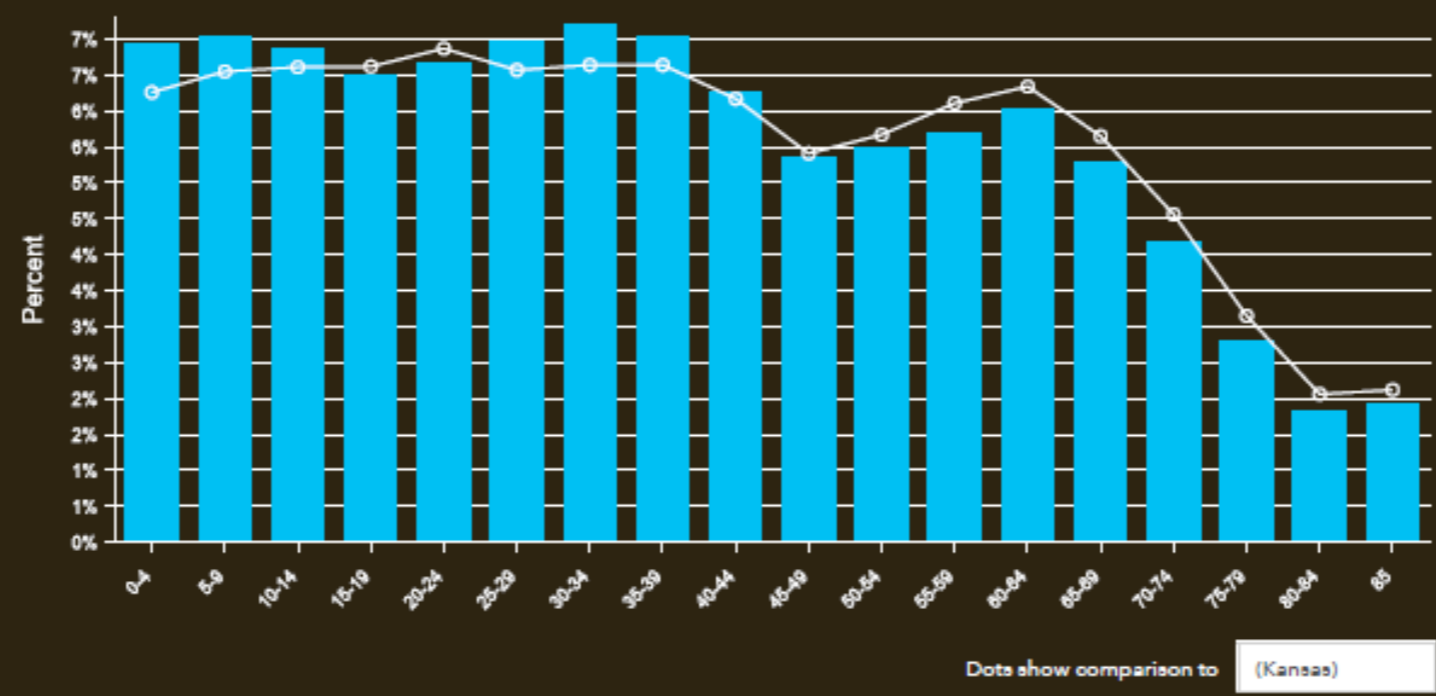


Wichita City, KS
Geography: Place



Tapestry LifeMode	Households	HHs %	% US HHs	Index
learn more...				
GenXurban (L5)	27,724	17.34%	11.26%	154
Hometown (L12)	24,647	15.41%	6.01%	256
Middle Ground (L8)	24,036	15.03%	10.79%	139
Midtown Singles (L11)	23,139	14.47%	6.16%	235
Family Landscapes (L4)	16,816	10.52%	7.63%	138
Affluent Estates (L1)	15,974	9.99%	10.00%	100
Sprouting Explorers (L7)	8,503	5.32%	7.20%	74
Senior Styles (L9)	5,810	3.63%	5.80%	63
Cozy Country Living (L6)	5,725	3.58%	12.06%	30
Next Wave (L13)	3,702	2.32%	3.78%	61
Rustic Outposts (L10)	3,481	2.18%	8.30%	26
Scholars and Patriots (L14)	337	0.21%	1.61%	13
Upscale Avenues (L2)	0	0.00%	5.55%	0
Uptown Individuals (L3)	0	0.00%	3.58%	0

Age Profile



2023 Households By Income (Esri)

The largest group: \$50,000 - \$74,999 (20.3%)
The smallest group: \$200,000+ (4.5%)

Indicator ▲	Value	Diff
<\$15,000	11.3%	+2.1%
\$15,000 - \$24,999	8.2%	+0.6%
\$25,000 - \$34,999	10.0%	+1.9%
\$35,000 - \$49,999	13.7%	+1.4%
\$50,000 - \$74,999	20.3%	+2.0%
\$75,000 - \$99,999	12.7%	-0.8%
\$100,000 - \$149,999	13.7%	-3.1%
\$150,000 - \$199,999	5.6%	-1.6%
\$200,000+	4.5%	-2.4%

Bars show deviation from (Kansas)

Tapestry Segments

- 12B Traditional Living** 17,800 households **11.1%** of Households
- 11D Set to Impress** 10,977 households **6.9%** of Households
- 5D Rustbelt Traditions** 9,978 households **6.2%** of Households

Source: Esri. The vintage of the data is 2022.



Wichita City, KS
Wichita City, KS (2079000)
Geography: Place

Prepared by Esri

	Wichita city,...
Census 2010 Summary	
Population	384,621
Households	152,599
Families	95,441
Average Household Size	2.48
Owner Occupied Housing Units	93,726
Renter Occupied Housing Units	58,873
Median Age	34.0
Census 2020 Summary	
Population	397,564
Households	158,861
Average Household Size	2.44
2023 Summary	
Population	401,338
Households	161,194
Families	97,267
Average Household Size	2.43
Owner Occupied Housing Units	98,688
Renter Occupied Housing Units	62,506
Median Age	36.3
Median Household Income	\$56,180
Average Household Income	\$79,687
2028 Summary	
Population	402,967
Households	163,277
Families	98,448
Average Household Size	2.41
Owner Occupied Housing Units	101,597
Renter Occupied Housing Units	61,680
Median Age	36.9
Median Household Income	\$61,375
Average Household Income	\$89,432
Trends: 2023-2028 Annual Rate	
Population	0.08%
Households	0.26%
Families	0.24%
Owner Households	0.58%
Median Household Income	1.78%

Source: Esri forecasts for 2023 and 2028. U.S. Census Bureau 2010 decennial Census data converted by Esri into 2020 geography.

July 07, 2023

Wichita City, KS
Wichita City, KS (2079000)
Geography: Place

Prepared by Esri

2023 Households by Income	Wichita city,...	
	Number	Percent
<\$15,000	18,251	11.3%
\$15,000 - \$24,999	13,240	8.2%
\$25,000 - \$34,999	16,147	10.0%
\$35,000 - \$49,999	22,036	13.7%
\$50,000 - \$74,999	32,706	20.3%
\$75,000 - \$99,999	20,466	12.7%
\$100,000 - \$149,999	22,025	13.7%
\$150,000 - \$199,999	9,021	5.6%
\$200,000+	7,302	4.5%
Median Household Income	\$56,180	
Average Household Income	\$79,687	
Per Capita Income	\$32,138	

2028 Households by Income	Wichita city,...	
	Number	Percent
<\$15,000	17,135	10.5%
\$15,000 - \$24,999	11,558	7.1%
\$25,000 - \$34,999	13,961	8.6%
\$35,000 - \$49,999	20,505	12.6%
\$50,000 - \$74,999	33,250	20.4%
\$75,000 - \$99,999	22,229	13.6%
\$100,000 - \$149,999	24,315	14.9%
\$150,000 - \$199,999	11,759	7.2%
\$200,000+	8,565	5.2%
Median Household Income	\$61,375	
Average Household Income	\$89,432	
Per Capita Income	\$36,368	

Data Note: Income is expressed in current dollars.

Source: Esri forecasts for 2023 and 2028. U.S. Census Bureau 2010 decennial Census data converted by Esri into 2020 geography.

Wichita City, KS
 Wichita City, KS (2079000)
 Geography: Place

Prepared by Esri

	Wichita city,...	
	Number	Percent
2010 Population by Age		
Age 0 - 4	30,745	8.0%
Age 5 - 9	28,486	7.4%
Age 10 - 14	26,943	7.0%
Age 15 - 19	26,292	6.8%
Age 20 - 24	28,760	7.5%
Age 25 - 34	55,981	14.6%
Age 35 - 44	47,179	12.3%
Age 45 - 54	53,332	13.9%
Age 55 - 64	42,479	11.0%
Age 65 - 74	22,436	5.8%
Age 75 - 84	15,127	3.9%
Age 85+	6,862	1.8%
2023 Population by Age		
Age 0 - 4	27,770	6.9%
Age 5 - 9	28,170	7.0%
Age 10 - 14	27,601	6.9%
Age 15 - 19	26,133	6.5%
Age 20 - 24	26,744	6.7%
Age 25 - 34	56,895	14.2%
Age 35 - 44	53,326	13.3%
Age 45 - 54	43,487	10.8%
Age 55 - 64	46,976	11.7%
Age 65 - 74	37,967	9.5%
Age 75 - 84	18,525	4.6%
Age 85+	7,744	1.9%
2028 Population by Age		
Age 0 - 4	28,344	7.0%
Age 5 - 9	27,616	6.9%
Age 10 - 14	27,470	6.8%
Age 15 - 19	26,177	6.5%
Age 20 - 24	27,025	6.7%
Age 25 - 34	54,005	13.4%
Age 35 - 44	55,020	13.7%
Age 45 - 54	44,629	11.1%
Age 55 - 64	41,183	10.2%
Age 65 - 74	39,996	9.9%
Age 75 - 84	22,923	5.7%
Age 85+	8,579	2.1%

Source: Esri forecasts for 2023 and 2028. U.S. Census Bureau 2010 decennial Census data converted by Esri into 2020 geography.

Wichita City, KS
 Wichita City, KS (2079000)
 Geography: Place

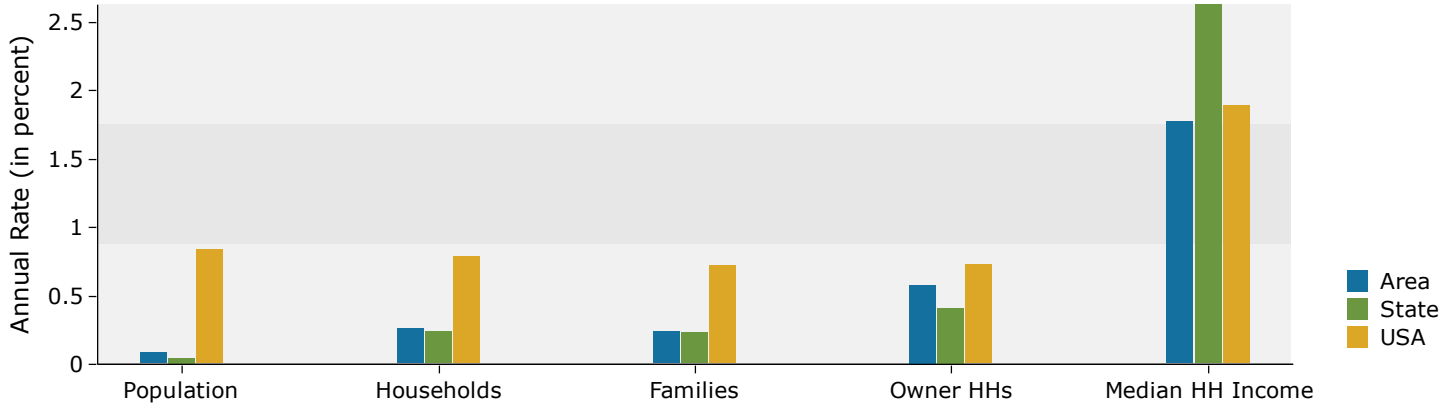
Prepared by Esri

	Wichita city,...	
	Number	Percent
2010 Race and Ethnicity		
White Alone	277,528	72.2%
Black Alone	43,727	11.4%
American Indian Alone	4,600	1.2%
Asian Alone	18,277	4.8%
Pacific Islander Alone	337	0.1%
Some Other Race Alone	23,529	6.1%
Two or More Races	16,623	4.3%
Hispanic Origin (Any Race)	58,380	15.2%
2020 Race and Ethnicity		
White Alone	252,020	63.4%
Black Alone	43,537	11.0%
American Indian Alone	5,296	1.3%
Asian Alone	20,227	5.1%
Pacific Islander Alone	482	0.1%
Some Other Race Alone	29,446	7.4%
Two or More Races	46,556	11.7%
Hispanic Origin (Any Race)	72,791	18.3%
2023 Race and Ethnicity		
White Alone	251,415	62.6%
Black Alone	43,676	10.9%
American Indian Alone	5,547	1.4%
Asian Alone	20,039	5.0%
Pacific Islander Alone	538	0.1%
Some Other Race Alone	31,375	7.8%
Two or More Races	48,748	12.1%
Hispanic Origin (Any Race)	77,349	19.3%
2028 Race and Ethnicity		
White Alone	245,018	60.8%
Black Alone	43,555	10.8%
American Indian Alone	5,891	1.5%
Asian Alone	20,305	5.0%
Pacific Islander Alone	623	0.2%
Some Other Race Alone	34,220	8.5%
Two or More Races	53,355	13.2%
Hispanic Origin (Any Race)	82,857	20.6%

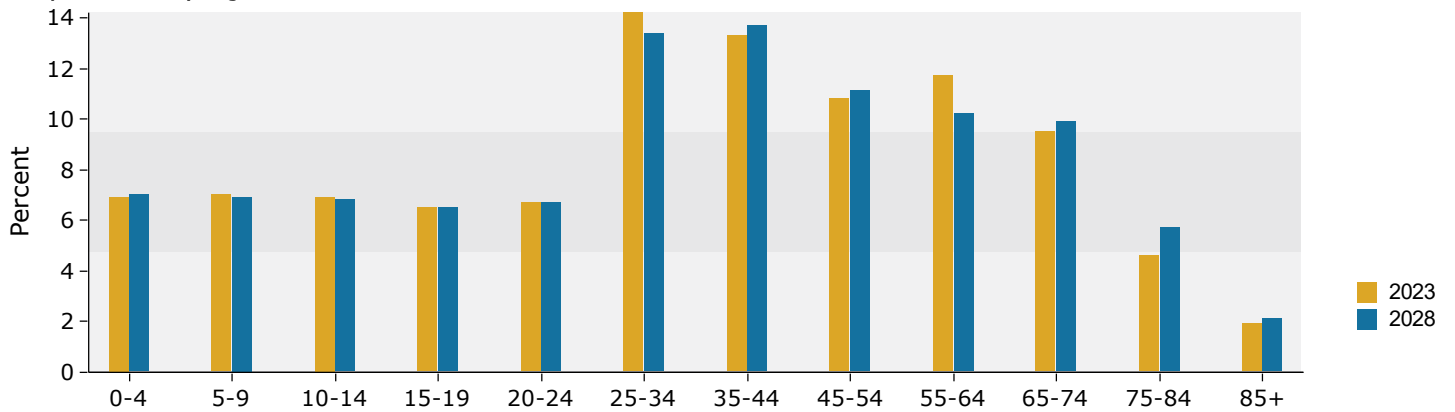
Source: Esri forecasts for 2023 and 2028. U.S. Census Bureau 2010 decennial Census data converted by Esri into 2020 geography.

Wichita city,...

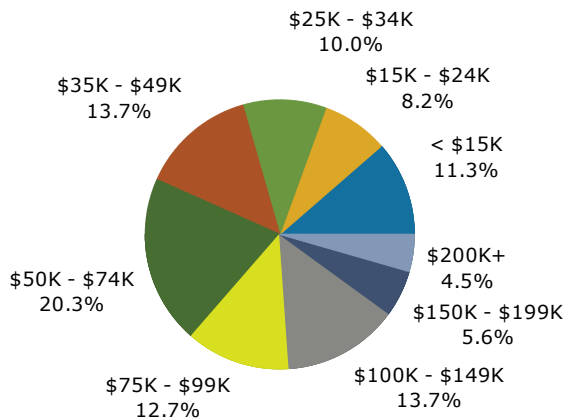
Trends 2023-2028



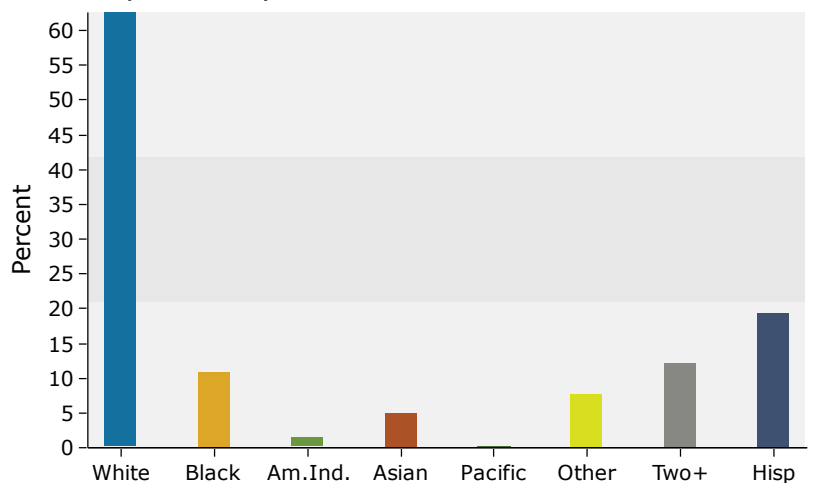
Population by Age



2023 Household Income



2023 Population by Race



Source: Esri forecasts for 2023 and 2028. U.S. Census Bureau 2010 decennial Census data converted by Esri into 2020 geography.

Age by Sex by Race Profile

Wichita City, KS
Wichita City, KS (2079000)
Geography: Place

Prepared by Esri

Summary	Census 2010	2022	2027	2022-2027 Change	2022-2027 Annual Rate
Population	384,606	399,769	400,909	1,140	0.06%
Households	152,594	159,894	160,743	849	0.11%
Median Age	34.0	36.1	36.7	0.6	0.33%
Median Male Age	33.2	35.4	36.0	0.6	0.34%
Median Female Age	34.9	36.8	37.5	0.7	0.38%

2022 Hispanic Population by Age

	Total		Males		Females	
	Number	Percent	Number	Percent	Number	Percent
Total	73,683	100.0%	37,420	100.0%	36,263	100.0%
0 - 4	9,084	12.3%	4,442	11.9%	4,642	12.8%
5 - 9	8,658	11.8%	4,348	11.6%	4,310	11.9%
10 - 14	7,836	10.6%	3,931	10.5%	3,905	10.8%
15 - 19	6,538	8.9%	3,324	8.9%	3,214	8.9%
20 - 24	5,765	7.8%	2,936	7.8%	2,829	7.8%
25 - 29	6,046	8.2%	3,202	8.6%	2,844	7.8%
30 - 34	6,296	8.5%	3,304	8.8%	2,992	8.3%
35 - 39	5,991	8.1%	3,059	8.2%	2,932	8.1%
40 - 44	4,451	6.0%	2,329	6.2%	2,122	5.9%
45 - 49	3,003	4.1%	1,589	4.2%	1,414	3.9%
50 - 54	2,430	3.3%	1,243	3.3%	1,187	3.3%
55 - 59	2,017	2.7%	1,044	2.8%	973	2.7%
60 - 64	1,728	2.3%	844	2.3%	884	2.4%
65 - 69	1,456	2.0%	758	2.0%	698	1.9%
70 - 74	1,000	1.4%	480	1.3%	520	1.4%
75 - 79	643	0.9%	292	0.8%	351	1.0%
80 - 84	381	0.5%	162	0.4%	219	0.6%
85+	360	0.5%	133	0.4%	227	0.6%
Median Age	24.1		24.5		23.6	

2027 Hispanic Population by Age

	Total		Males		Females	
	Number	Percent	Number	Percent	Number	Percent
Total	75,010	100.0%	38,082	100.0%	36,928	100.0%
0 - 4	9,354	12.5%	4,596	12.1%	4,758	12.9%
5 - 9	8,757	11.7%	4,400	11.6%	4,357	11.8%
10 - 14	7,992	10.7%	4,019	10.6%	3,973	10.8%
15 - 19	6,805	9.1%	3,431	9.0%	3,374	9.1%
20 - 24	6,027	8.0%	3,074	8.1%	2,953	8.0%
25 - 29	5,879	7.8%	3,105	8.2%	2,774	7.5%
30 - 34	5,887	7.8%	3,070	8.1%	2,817	7.6%
35 - 39	5,894	7.9%	3,059	8.0%	2,835	7.7%
40 - 44	4,940	6.6%	2,534	6.7%	2,406	6.5%
45 - 49	3,292	4.4%	1,733	4.6%	1,559	4.2%
50 - 54	2,353	3.1%	1,211	3.2%	1,142	3.1%
55 - 59	1,879	2.5%	987	2.6%	892	2.4%
60 - 64	1,619	2.2%	782	2.1%	837	2.3%
65 - 69	1,561	2.1%	829	2.2%	732	2.0%
70 - 74	1,130	1.5%	538	1.4%	592	1.6%
75 - 79	766	1.0%	350	0.9%	416	1.1%
80 - 84	490	0.7%	220	0.6%	270	0.7%
85+	385	0.5%	144	0.4%	241	0.7%
Median Age	23.8		24.2		23.4	

Source: Esri forecasts for 2022 and 2027. U.S. Census Bureau 2010 decennial Census data converted by Esri into 2020 geography.

Age by Sex by Race Profile

Wichita City, KS
Wichita City, KS (2079000)
Geography: Place

Prepared by Esri

2022 White Population by Age

	Total		Males		Females	
	Number	Percent	Number	Percent	Number	Percent
Total	252,427	100.0%	124,193	100.0%	128,234	100.0%
0 - 4	12,840	5.1%	6,522	5.3%	6,318	4.9%
5 - 9	13,199	5.2%	6,789	5.5%	6,410	5.0%
10 - 14	13,285	5.3%	6,681	5.4%	6,604	5.1%
15 - 19	13,861	5.5%	7,020	5.7%	6,841	5.3%
20 - 24	15,594	6.2%	7,720	6.2%	7,874	6.1%
25 - 29	17,458	6.9%	8,847	7.1%	8,611	6.7%
30 - 34	17,422	6.9%	8,899	7.2%	8,523	6.6%
35 - 39	17,454	6.9%	8,784	7.1%	8,670	6.8%
40 - 44	15,425	6.1%	7,853	6.3%	7,572	5.9%
45 - 49	14,846	5.9%	7,559	6.1%	7,287	5.7%
50 - 54	15,510	6.1%	7,869	6.3%	7,641	6.0%
55 - 59	17,236	6.8%	8,543	6.9%	8,693	6.8%
60 - 64	18,387	7.3%	8,918	7.2%	9,469	7.4%
65 - 69	15,870	6.3%	7,513	6.0%	8,357	6.5%
70 - 74	12,431	4.9%	5,843	4.7%	6,588	5.1%
75 - 79	8,815	3.5%	3,876	3.1%	4,939	3.9%
80 - 84	5,808	2.3%	2,415	1.9%	3,393	2.6%
85+	6,986	2.8%	2,542	2.0%	4,444	3.5%
Median Age	41.7		40.5		42.8	

2027 White Population by Age

	Total		Males		Females	
	Number	Percent	Number	Percent	Number	Percent
Total	247,558	100.0%	121,835	100.0%	125,723	100.0%
0 - 4	12,325	5.0%	6,305	5.2%	6,020	4.8%
5 - 9	12,422	5.0%	6,390	5.2%	6,032	4.8%
10 - 14	12,691	5.1%	6,432	5.3%	6,259	5.0%
15 - 19	13,502	5.5%	6,825	5.6%	6,677	5.3%
20 - 24	15,076	6.1%	7,418	6.1%	7,658	6.1%
25 - 29	16,001	6.5%	8,087	6.6%	7,914	6.3%
30 - 34	16,307	6.6%	8,380	6.9%	7,927	6.3%
35 - 39	16,571	6.7%	8,408	6.9%	8,163	6.5%
40 - 44	16,844	6.8%	8,515	7.0%	8,329	6.6%
45 - 49	15,642	6.3%	7,916	6.5%	7,726	6.1%
50 - 54	14,347	5.8%	7,306	6.0%	7,041	5.6%
55 - 59	14,848	6.0%	7,432	6.1%	7,416	5.9%
60 - 64	15,884	6.4%	7,812	6.4%	8,072	6.4%
65 - 69	16,361	6.6%	7,810	6.4%	8,551	6.8%
70 - 74	13,770	5.6%	6,379	5.2%	7,391	5.9%
75 - 79	10,872	4.4%	4,859	4.0%	6,013	4.8%
80 - 84	7,068	2.9%	2,992	2.5%	4,076	3.2%
85+	7,027	2.8%	2,569	2.1%	4,458	3.5%
Median Age	42.6		41.6		43.7	

Source: Esri forecasts for 2022 and 2027. U.S. Census Bureau 2010 decennial Census data converted by Esri into 2020 geography.

Age by Sex by Race Profile

Wichita City, KS
Wichita City, KS (2079000)
Geography: Place

Prepared by Esri

2022 Black Population by Age

	Total		Males		Females	
	Number	Percent	Number	Percent	Number	Percent
Total	43,473	100.0%	21,309	100.0%	22,164	100.0%
0 - 4	3,324	7.6%	1,675	7.9%	1,649	7.4%
5 - 9	3,267	7.5%	1,662	7.8%	1,605	7.2%
10 - 14	3,281	7.5%	1,667	7.8%	1,614	7.3%
15 - 19	3,381	7.8%	1,732	8.1%	1,649	7.4%
20 - 24	3,120	7.2%	1,502	7.0%	1,618	7.3%
25 - 29	3,261	7.5%	1,641	7.7%	1,620	7.3%
30 - 34	3,324	7.6%	1,610	7.6%	1,714	7.7%
35 - 39	3,108	7.1%	1,574	7.4%	1,534	6.9%
40 - 44	2,802	6.4%	1,395	6.5%	1,407	6.3%
45 - 49	2,711	6.2%	1,344	6.3%	1,367	6.2%
50 - 54	2,578	5.9%	1,321	6.2%	1,257	5.7%
55 - 59	2,370	5.5%	1,164	5.5%	1,206	5.4%
60 - 64	2,008	4.6%	973	4.6%	1,035	4.7%
65 - 69	1,716	3.9%	753	3.5%	963	4.3%
70 - 74	1,350	3.1%	590	2.8%	760	3.4%
75 - 79	945	2.2%	398	1.9%	547	2.5%
80 - 84	494	1.1%	174	0.8%	320	1.4%
85+	433	1.0%	134	0.6%	299	1.3%
Median Age	33.2		32.4		33.9	

2027 Black Population by Age

	Total		Males		Females	
	Number	Percent	Number	Percent	Number	Percent
Total	43,205	100.0%	21,107	100.0%	22,098	100.0%
0 - 4	3,291	7.6%	1,665	7.9%	1,626	7.4%
5 - 9	3,133	7.3%	1,597	7.6%	1,536	7.0%
10 - 14	3,221	7.5%	1,644	7.8%	1,577	7.1%
15 - 19	3,377	7.8%	1,718	8.1%	1,659	7.5%
20 - 24	3,170	7.3%	1,521	7.2%	1,649	7.5%
25 - 29	3,115	7.2%	1,530	7.2%	1,585	7.2%
30 - 34	2,989	6.9%	1,460	6.9%	1,529	6.9%
35 - 39	3,068	7.1%	1,540	7.3%	1,528	6.9%
40 - 44	3,090	7.2%	1,528	7.2%	1,562	7.1%
45 - 49	2,944	6.8%	1,471	7.0%	1,473	6.7%
50 - 54	2,437	5.6%	1,237	5.9%	1,200	5.4%
55 - 59	2,125	4.9%	1,065	5.0%	1,060	4.8%
60 - 64	1,887	4.4%	916	4.3%	971	4.4%
65 - 69	1,776	4.1%	764	3.6%	1,012	4.6%
70 - 74	1,474	3.4%	651	3.1%	823	3.7%
75 - 79	1,075	2.5%	448	2.1%	627	2.8%
80 - 84	574	1.3%	209	1.0%	365	1.7%
85+	459	1.1%	143	0.7%	316	1.4%
Median Age	33.8		33.0		34.6	

Source: Esri forecasts for 2022 and 2027. U.S. Census Bureau 2010 decennial Census data converted by Esri into 2020 geography.

Age by Sex by Race Profile

Wichita City, KS
Wichita City, KS (2079000)
Geography: Place

Prepared by Esri

2022 American Indian Population by Age

	Total		Males		Females	
	Number	Percent	Number	Percent	Number	Percent
Total	5,353	100.0%	2,535	100.0%	2,818	100.0%
0 - 4	280	5.2%	132	5.2%	148	5.3%
5 - 9	343	6.4%	164	6.5%	179	6.4%
10 - 14	385	7.2%	223	8.8%	162	5.7%
15 - 19	383	7.2%	196	7.7%	187	6.6%
20 - 24	352	6.6%	176	6.9%	176	6.2%
25 - 29	422	7.9%	195	7.7%	227	8.1%
30 - 34	423	7.9%	212	8.4%	211	7.5%
35 - 39	432	8.1%	206	8.1%	226	8.0%
40 - 44	394	7.4%	163	6.4%	231	8.2%
45 - 49	359	6.7%	175	6.9%	184	6.5%
50 - 54	325	6.1%	143	5.6%	182	6.5%
55 - 59	353	6.6%	157	6.2%	196	7.0%
60 - 64	316	5.9%	142	5.6%	174	6.2%
65 - 69	200	3.7%	81	3.2%	119	4.2%
70 - 74	187	3.5%	80	3.2%	107	3.8%
75 - 79	89	1.7%	47	1.9%	42	1.5%
80 - 84	71	1.3%	27	1.1%	44	1.6%
85+	39	0.7%	16	0.6%	23	0.8%
Median Age	36.0		34.3		37.6	

2027 American Indian Population by Age

	Total		Males		Females	
	Number	Percent	Number	Percent	Number	Percent
Total	5,477	100.0%	2,590	100.0%	2,887	100.0%
0 - 4	286	5.2%	135	5.2%	151	5.2%
5 - 9	344	6.3%	168	6.5%	176	6.1%
10 - 14	400	7.3%	232	9.0%	168	5.8%
15 - 19	386	7.0%	197	7.6%	189	6.5%
20 - 24	378	6.9%	191	7.4%	187	6.5%
25 - 29	420	7.7%	191	7.4%	229	7.9%
30 - 34	399	7.3%	200	7.7%	199	6.9%
35 - 39	438	8.0%	210	8.1%	228	7.9%
40 - 44	446	8.1%	184	7.1%	262	9.1%
45 - 49	399	7.3%	193	7.5%	206	7.1%
50 - 54	315	5.8%	142	5.5%	173	6.0%
55 - 59	331	6.0%	146	5.6%	185	6.4%
60 - 64	290	5.3%	132	5.1%	158	5.5%
65 - 69	222	4.1%	90	3.5%	132	4.6%
70 - 74	205	3.7%	89	3.4%	116	4.0%
75 - 79	92	1.7%	44	1.7%	48	1.7%
80 - 84	85	1.6%	30	1.2%	55	1.9%
85+	41	0.7%	16	0.6%	25	0.9%
Median Age	36.4		34.5		38.2	

Source: Esri forecasts for 2022 and 2027. U.S. Census Bureau 2010 decennial Census data converted by Esri into 2020 geography.

Age by Sex by Race Profile

Wichita City, KS
Wichita City, KS (2079000)
Geography: Place

Prepared by Esri

2022 Asian Population by Age

	Total		Males		Females	
	Number	Percent	Number	Percent	Number	Percent
Total	19,999	100.0%	9,832	100.0%	10,167	100.0%
0 - 4	1,128	5.6%	578	5.9%	550	5.4%
5 - 9	1,342	6.7%	698	7.1%	644	6.3%
10 - 14	1,269	6.3%	658	6.7%	611	6.0%
15 - 19	1,229	6.1%	598	6.1%	631	6.2%
20 - 24	1,518	7.6%	825	8.4%	693	6.8%
25 - 29	1,791	9.0%	930	9.5%	861	8.5%
30 - 34	1,672	8.4%	810	8.2%	862	8.5%
35 - 39	2,043	10.2%	966	9.8%	1,077	10.6%
40 - 44	1,588	7.9%	795	8.1%	793	7.8%
45 - 49	1,105	5.5%	553	5.6%	552	5.4%
50 - 54	998	5.0%	467	4.7%	531	5.2%
55 - 59	1,051	5.3%	503	5.1%	548	5.4%
60 - 64	1,068	5.3%	475	4.8%	593	5.8%
65 - 69	932	4.7%	419	4.3%	513	5.0%
70 - 74	662	3.3%	314	3.2%	348	3.4%
75 - 79	329	1.6%	150	1.5%	179	1.8%
80 - 84	140	0.7%	54	0.5%	86	0.8%
85+	134	0.7%	39	0.4%	95	0.9%
Median Age	35.1		33.9		36.1	

2027 Asian Population by Age

	Total		Males		Females	
	Number	Percent	Number	Percent	Number	Percent
Total	20,244	100.0%	9,945	100.0%	10,299	100.0%
0 - 4	1,135	5.6%	585	5.9%	550	5.3%
5 - 9	1,339	6.6%	698	7.0%	641	6.2%
10 - 14	1,293	6.4%	673	6.8%	620	6.0%
15 - 19	1,254	6.2%	602	6.1%	652	6.3%
20 - 24	1,513	7.5%	818	8.2%	695	6.7%
25 - 29	1,598	7.9%	806	8.1%	792	7.7%
30 - 34	1,688	8.3%	841	8.5%	847	8.2%
35 - 39	2,022	10.0%	974	9.8%	1,048	10.2%
40 - 44	1,806	8.9%	886	8.9%	920	8.9%
45 - 49	1,214	6.0%	602	6.1%	612	5.9%
50 - 54	976	4.8%	465	4.7%	511	5.0%
55 - 59	968	4.8%	465	4.7%	503	4.9%
60 - 64	979	4.8%	440	4.4%	539	5.2%
65 - 69	971	4.8%	439	4.4%	532	5.2%
70 - 74	753	3.7%	353	3.5%	400	3.9%
75 - 79	418	2.1%	190	1.9%	228	2.2%
80 - 84	165	0.8%	64	0.6%	101	1.0%
85+	152	0.8%	44	0.4%	108	1.0%
Median Age	35.7		34.7		36.7	

Source: Esri forecasts for 2022 and 2027. U.S. Census Bureau 2010 decennial Census data converted by Esri into 2020 geography.

Age by Sex by Race Profile

Wichita City, KS
Wichita City, KS (2079000)
Geography: Place

Prepared by Esri

2022 Pacific Islander Population by Age

	Total		Males		Females	
	Number	Percent	Number	Percent	Number	Percent
Total	488	100.0%	231	100.0%	257	100.0%
0 - 4	29	5.9%	15	6.5%	14	5.4%
5 - 9	20	4.1%	15	6.5%	5	1.9%
10 - 14	33	6.8%	15	6.5%	18	7.0%
15 - 19	30	6.1%	18	7.8%	12	4.7%
20 - 24	28	5.7%	12	5.2%	16	6.2%
25 - 29	47	9.6%	21	9.1%	26	10.1%
30 - 34	50	10.2%	22	9.5%	28	10.9%
35 - 39	43	8.8%	23	10.0%	20	7.8%
40 - 44	28	5.7%	15	6.5%	13	5.1%
45 - 49	19	3.9%	12	5.2%	7	2.7%
50 - 54	19	3.9%	10	4.3%	9	3.5%
55 - 59	17	3.5%	5	2.2%	12	4.7%
60 - 64	29	5.9%	13	5.6%	16	6.2%
65 - 69	32	6.6%	12	5.2%	20	7.8%
70 - 74	26	5.3%	10	4.3%	16	6.2%
75 - 79	13	2.7%	5	2.2%	8	3.1%
80 - 84	19	3.9%	6	2.6%	13	5.1%
85+	6	1.2%	2	0.9%	4	1.6%
Median Age	35.8		34.4		37.4	

2027 Pacific Islander Population by Age

	Total		Males		Females	
	Number	Percent	Number	Percent	Number	Percent
Total	499	100.0%	235	100.0%	264	100.0%
0 - 4	18	3.6%	9	3.8%	9	3.4%
5 - 9	25	5.0%	15	6.4%	10	3.8%
10 - 14	33	6.6%	18	7.7%	15	5.7%
15 - 19	26	5.2%	15	6.4%	11	4.2%
20 - 24	36	7.2%	17	7.2%	19	7.2%
25 - 29	30	6.0%	11	4.7%	19	7.2%
30 - 34	47	9.4%	25	10.6%	22	8.3%
35 - 39	52	10.4%	21	8.9%	31	11.7%
40 - 44	42	8.4%	22	9.4%	20	7.6%
45 - 49	24	4.8%	14	6.0%	10	3.8%
50 - 54	17	3.4%	10	4.3%	7	2.7%
55 - 59	16	3.2%	7	3.0%	9	3.4%
60 - 64	21	4.2%	7	3.0%	14	5.3%
65 - 69	30	6.0%	14	6.0%	16	6.1%
70 - 74	33	6.6%	12	5.1%	21	8.0%
75 - 79	23	4.6%	9	3.8%	14	5.3%
80 - 84	13	2.6%	4	1.7%	9	3.4%
85+	13	2.6%	5	2.1%	8	3.0%
Median Age	38.3		36.8		39.4	

Source: Esri forecasts for 2022 and 2027. U.S. Census Bureau 2010 decennial Census data converted by Esri into 2020 geography.

Wichita City, KS
 Wichita City, KS (2079000)
 Geography: Place

Prepared by Esri

2022 Some Other Race Population by Age

	Total		Males		Females	
	Number	Percent	Number	Percent	Number	Percent
Total	29,992	100.0%	15,640	100.0%	14,352	100.0%
0 - 4	2,979	9.9%	1,480	9.5%	1,499	10.4%
5 - 9	2,855	9.5%	1,446	9.2%	1,409	9.8%
10 - 14	2,754	9.2%	1,395	8.9%	1,359	9.5%
15 - 19	2,469	8.2%	1,300	8.3%	1,169	8.1%
20 - 24	2,647	8.8%	1,366	8.7%	1,281	8.9%
25 - 29	2,654	8.8%	1,445	9.2%	1,209	8.4%
30 - 34	2,883	9.6%	1,573	10.1%	1,310	9.1%
35 - 39	2,678	8.9%	1,386	8.9%	1,292	9.0%
40 - 44	2,051	6.8%	1,074	6.9%	977	6.8%
45 - 49	1,514	5.0%	824	5.3%	690	4.8%
50 - 54	1,201	4.0%	616	3.9%	585	4.1%
55 - 59	919	3.1%	502	3.2%	417	2.9%
60 - 64	750	2.5%	407	2.6%	343	2.4%
65 - 69	651	2.2%	346	2.2%	305	2.1%
70 - 74	448	1.5%	239	1.5%	209	1.5%
75 - 79	257	0.9%	126	0.8%	131	0.9%
80 - 84	150	0.5%	61	0.4%	89	0.6%
85+	132	0.4%	54	0.3%	78	0.5%
Median Age	27.4		27.9		26.9	

2027 Some Other Race Population by Age

	Total		Males		Females	
	Number	Percent	Number	Percent	Number	Percent
Total	31,340	100.0%	16,350	100.0%	14,990	100.0%
0 - 4	3,092	9.9%	1,541	9.4%	1,551	10.3%
5 - 9	2,917	9.3%	1,477	9.0%	1,440	9.6%
10 - 14	2,821	9.0%	1,427	8.7%	1,394	9.3%
15 - 19	2,618	8.4%	1,354	8.3%	1,264	8.4%
20 - 24	2,834	9.0%	1,462	8.9%	1,372	9.2%
25 - 29	2,708	8.6%	1,480	9.1%	1,228	8.2%
30 - 34	2,762	8.8%	1,519	9.3%	1,243	8.3%
35 - 39	2,736	8.7%	1,450	8.9%	1,286	8.6%
40 - 44	2,347	7.5%	1,208	7.4%	1,139	7.6%
45 - 49	1,751	5.6%	940	5.7%	811	5.4%
50 - 54	1,218	3.9%	635	3.9%	583	3.9%
55 - 59	882	2.8%	482	2.9%	400	2.7%
60 - 64	735	2.3%	396	2.4%	339	2.3%
65 - 69	729	2.3%	396	2.4%	333	2.2%
70 - 74	524	1.7%	281	1.7%	243	1.6%
75 - 79	314	1.0%	157	1.0%	157	1.0%
80 - 84	203	0.6%	86	0.5%	117	0.8%
85+	149	0.5%	59	0.4%	90	0.6%
Median Age	27.6		28.1		26.9	

Source: Esri forecasts for 2022 and 2027. U.S. Census Bureau 2010 decennial Census data converted by Esri into 2020 geography.

Age by Sex by Race Profile

Wichita City, KS
Wichita City, KS (2079000)
Geography: Place

Prepared by Esri

2022 Multiple Races Population by Age

	Total		Males		Females	
	Number	Percent	Number	Percent	Number	Percent
Total	48,045	100.0%	23,359	100.0%	24,686	100.0%
0 - 4	7,767	16.2%	3,798	16.3%	3,969	16.1%
5 - 9	7,129	14.8%	3,466	14.8%	3,663	14.8%
10 - 14	6,388	13.3%	3,125	13.4%	3,263	13.2%
15 - 19	4,503	9.4%	2,173	9.3%	2,330	9.4%
20 - 24	3,275	6.8%	1,593	6.8%	1,682	6.8%
25 - 29	3,046	6.3%	1,482	6.3%	1,564	6.3%
30 - 34	2,806	5.8%	1,297	5.6%	1,509	6.1%
35 - 39	2,537	5.3%	1,233	5.3%	1,304	5.3%
40 - 44	1,955	4.1%	961	4.1%	994	4.0%
45 - 49	1,387	2.9%	692	3.0%	695	2.8%
50 - 54	1,362	2.8%	670	2.9%	692	2.8%
55 - 59	1,300	2.7%	677	2.9%	623	2.5%
60 - 64	1,221	2.5%	603	2.6%	618	2.5%
65 - 69	1,055	2.2%	494	2.1%	561	2.3%
70 - 74	907	1.9%	406	1.7%	501	2.0%
75 - 79	599	1.2%	317	1.4%	282	1.1%
80 - 84	400	0.8%	183	0.8%	217	0.9%
85+	408	0.8%	189	0.8%	219	0.9%
Median Age	18.0		18.0		18.1	

2027 Multiple Races Population by Age

	Total		Males		Females	
	Number	Percent	Number	Percent	Number	Percent
Total	52,588	100.0%	25,560	100.0%	27,028	100.0%
0 - 4	8,497	16.2%	4,171	16.3%	4,326	16.0%
5 - 9	7,639	14.5%	3,702	14.5%	3,937	14.6%
10 - 14	6,989	13.3%	3,457	13.5%	3,532	13.1%
15 - 19	5,021	9.5%	2,410	9.4%	2,611	9.7%
20 - 24	3,642	6.9%	1,753	6.9%	1,889	7.0%
25 - 29	3,159	6.0%	1,549	6.1%	1,610	6.0%
30 - 34	2,911	5.5%	1,348	5.3%	1,563	5.8%
35 - 39	2,693	5.1%	1,308	5.1%	1,385	5.1%
40 - 44	2,378	4.5%	1,148	4.5%	1,230	4.6%
45 - 49	1,619	3.1%	809	3.2%	810	3.0%
50 - 54	1,416	2.7%	687	2.7%	729	2.7%
55 - 59	1,297	2.5%	679	2.7%	618	2.3%
60 - 64	1,197	2.3%	607	2.4%	590	2.2%
65 - 69	1,205	2.3%	568	2.2%	637	2.4%
70 - 74	1,123	2.1%	491	1.9%	632	2.3%
75 - 79	807	1.5%	417	1.6%	390	1.4%
80 - 84	525	1.0%	243	1.0%	282	1.0%
85+	470	0.9%	213	0.8%	257	1.0%
Median Age	18.2		18.0		18.3	

Data Note: Multiple Races population includes unique counts of the population who reported at least two races.

Source: Esri forecasts for 2022 and 2027. U.S. Census Bureau 2010 decennial Census data converted by Esri into 2020 geography.